



# Storage Services Administration

CSAID Ops

February 20, 2024

# Disk Storage Updates

- **Shared (Public)**

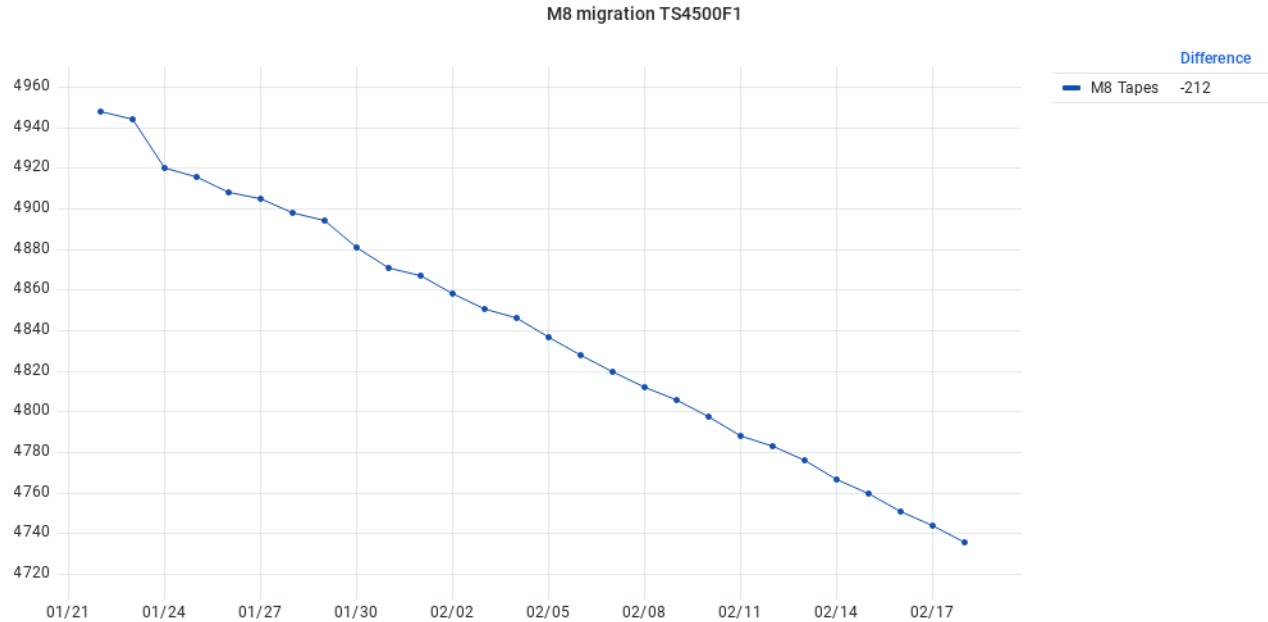
- New dCache pool servers pubstor230[1-12] are not being able to communicate due to network issues.
- DUNE is requesting 1PB of persistent disk space and will request it in the next FCRSG but they are willing to explore the possibility of getting this ahead.
- Wednesday 21<sup>st</sup> downtime: patch pools to interoperate with CVMFS better.

- **CMS**

- First week of DC24 went well. 23.5GB/s throughput was observed last Wednesday.
- CMS XRootD mainly worked fine with just a short-period timeout due to the underlying CMS dCache XRootD door timeout.
- EOS test nodes are being replaced and puppetized. 90% done, just need certs.

# Tape Storage Updates

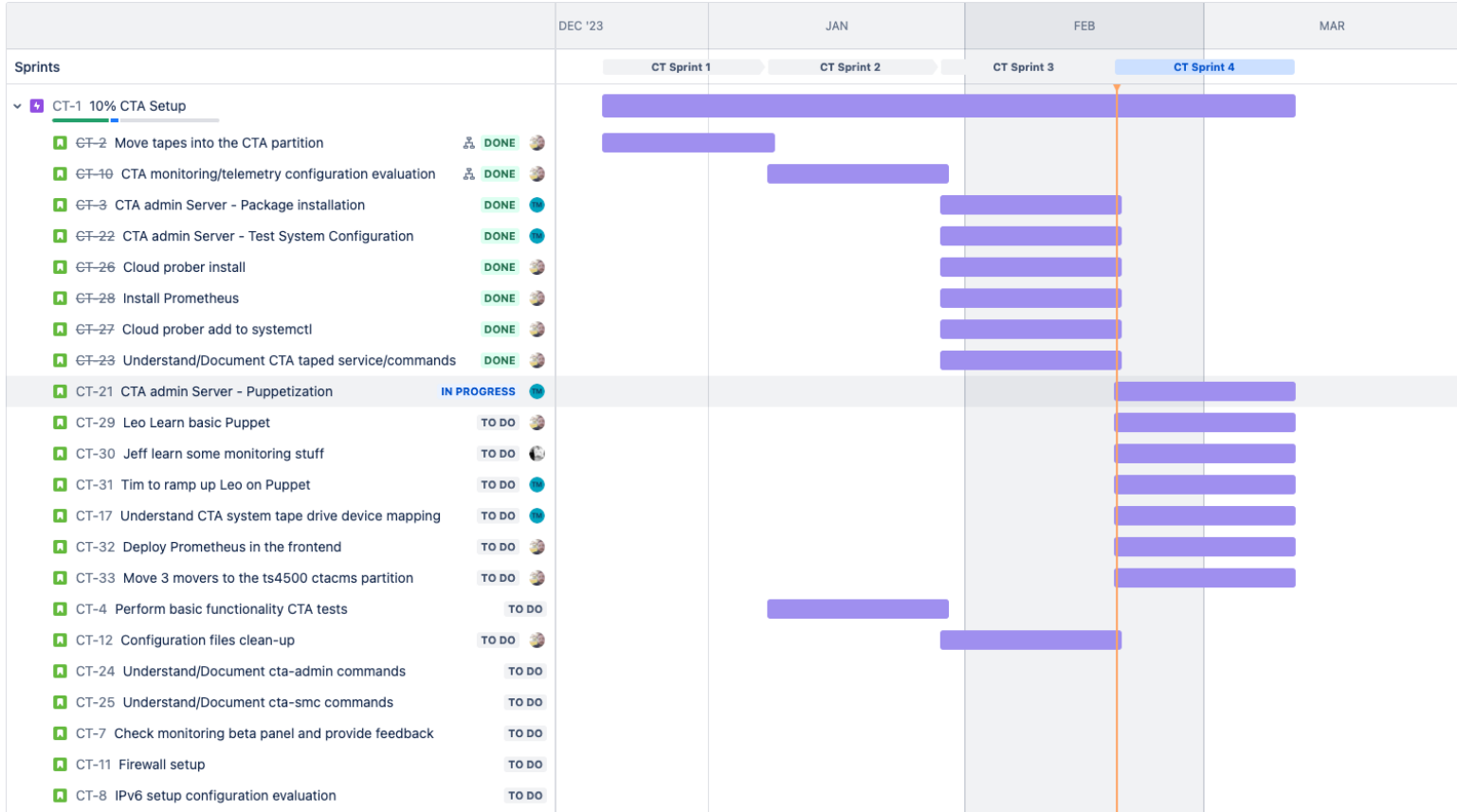
- Wednesday 21<sup>st</sup> downtime. Upgrade drive firmware on media changer movers.



M8 migration – 4736 tapes left

# Tape Storage Updates

- Enstore Alma 8 Migration (Work planned through Mar 11<sup>th</sup>):
  - Fix test system configuration.
  - Test new Alma 8/Enstore RPMs on one mover. (Early tests over the RPM are being performed)
  - Basic mover test set over the test system.



- NAS2CEPHFS Migration Progress

\*3<sup>rd</sup> Wednesday Downtime

Experiments	Notification	Cut- over day
nusoft, minerva, minos*	12/06/23	12/20/23*
fermigrid-fermiapp,lbnewc(dune), microboone	02/01/24	02/21/24*

- Additional steps need to be done for Minos and Minerva.*
- Nusoft is on hold – TBC*

- We will set data volumes to read only on March 20, 2024. A general announcement was sent on 02/01.
- We keep reminding experiments that NAS source volumes are reaching EOF this May 2024

- CEPHFS**

- Network problem caused many clients to lose connection to CEPH. Ssi unmounted/remounted the affected clients. Updated the cephfs session autoclose time from 300 to 600 seconds.
- EAF couldn't read files in cephfs, which ended up being due to having inconsistent MTU (maximum transmission unit) set for the different CEPH hosts.