

# Run plan an others

---

A. Cervera  
IFIC-Valencia

# Various things

---

- Link to the NP04 PDS data taking docs. Please indicate your presence at CERN in the first tab. Tasks will be distributed soon.

<https://docs.google.com/spreadsheets/d/14fpCjNZFnyq72wugfSGXdAcTrgFroA1Al2In7VeyZIY/edit?usp=sharing>

- **Documentation:** some documentation, mainly about DAPHNE (including expert training) added. Also channel mapping
- **Calibration trigger:** report from Carlos/Manuel in this meeting
- **IV curves:** report from Federico/Renan in this meeting
- **Shifts:** waiting for overall NP04 run coordinator appointment to understand general NP04 vs PDS-only shifts

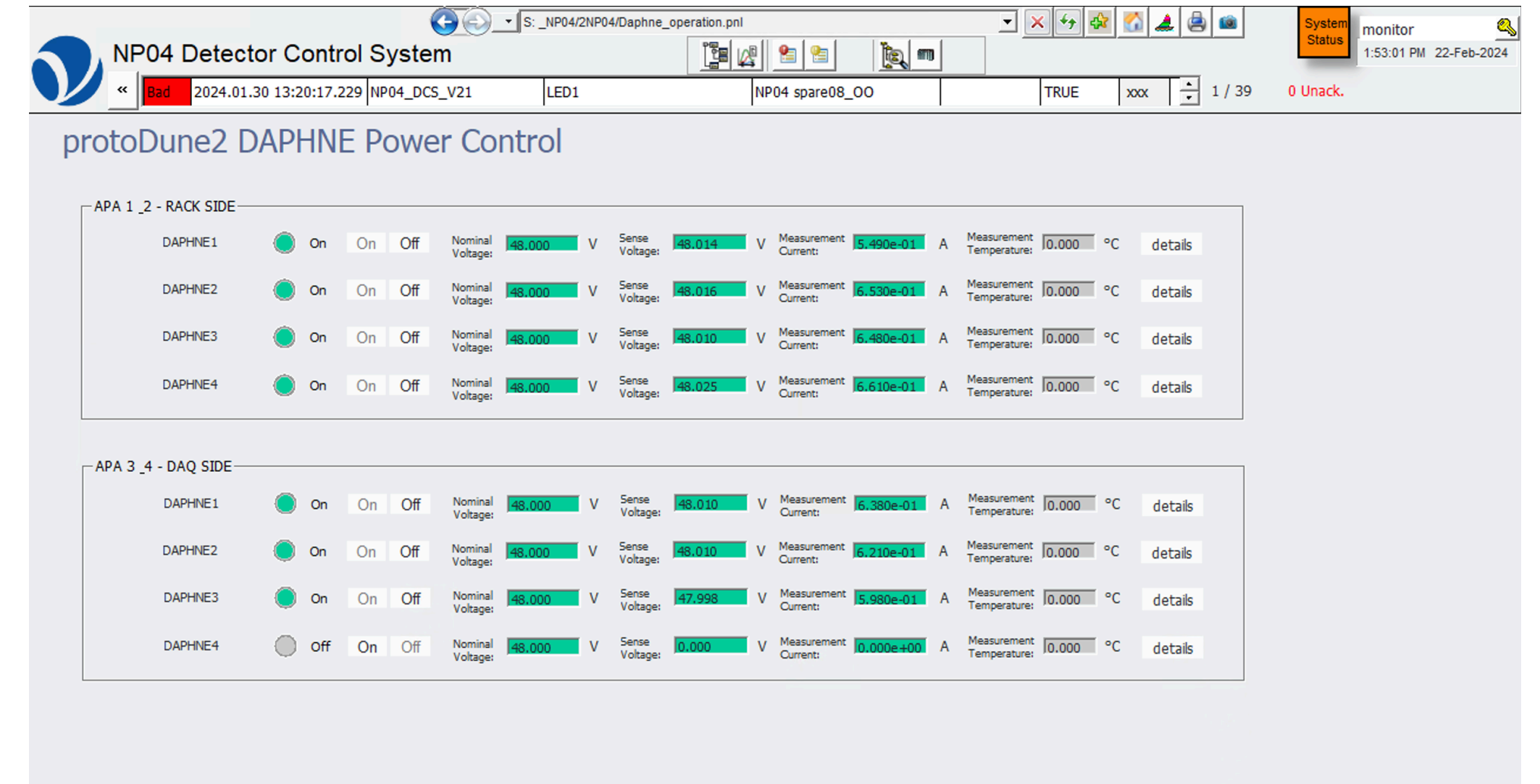
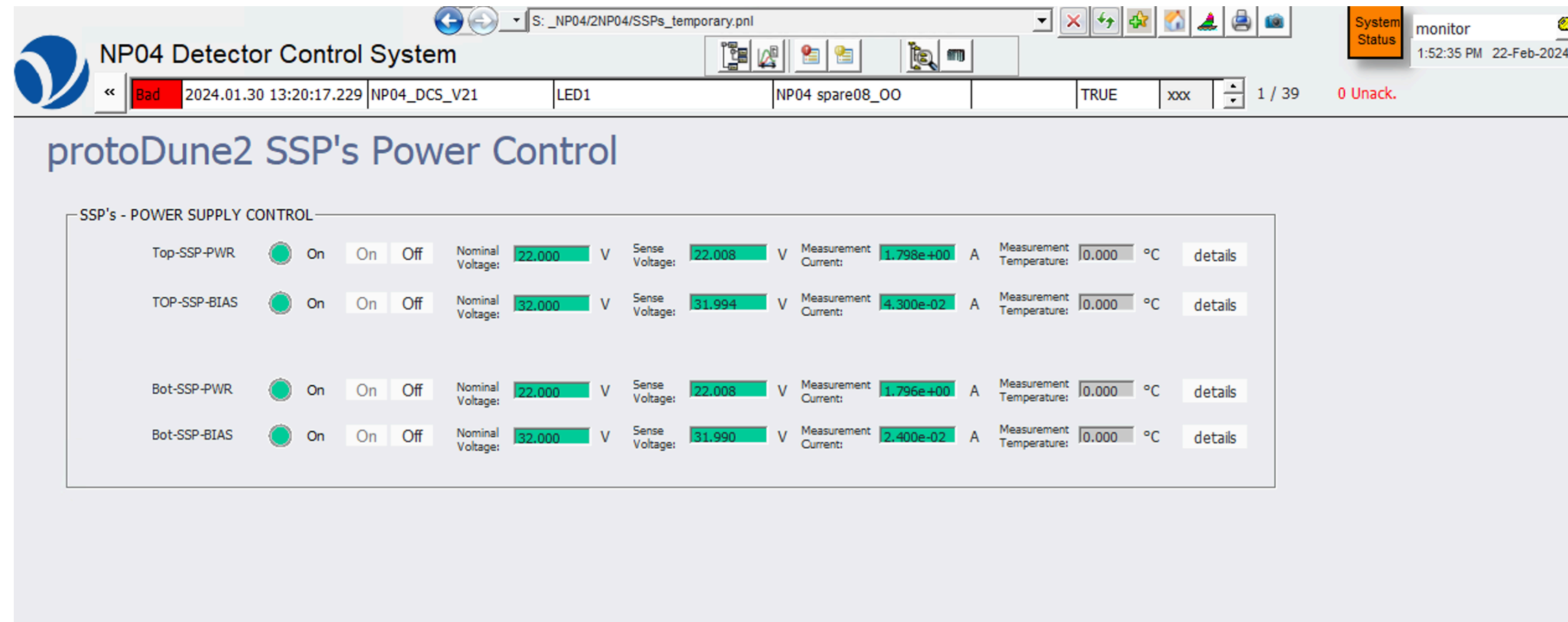
# PDS expert training

- Last week several people attended the PDS expert training at CERN
  - Focused on DAPHNE access and control
    - IV curves
    - Spy buffer access
    - Firmware uploading
    - Start looking at integration with DAQ
- We started writing some documentation, which is available here (also through main spreadsheet)
- Sufficient info to start developing online monitoring tools
- More training needed to become “pseudo-experts”

		FEBRUARY																				
		1	2	3	4	5	6	7	8	9	10	11	12	13	14	15	16	17	18	19	20	21
People at CERN																						
Name	Institution																					
Manuel Arroyave	FNAL																					
Renan de Aguiar	UNICAMP																					
Alessandro Minotti	MiB																					
Anna Scanu	MiB																					
Federico Galizzi	MiB																					
Jacob Boza	CSU																					
Fatma Boran	Indiana Uni.																					
Anselmo Cervera	IFIC																					
José Soto	IFIC																					
Anna Balboni	Ferrara																					

# Slow controls I

- Currently available through DCS: power control for DAPHNE and calibration module



- No hardware interlock for purity monitors (PrMs) possible at this moment, instead a button indicating powered SiPMs will be added to the DAPHNE power control panel. Current PDS expert should manually take care of this button, which will prevent PrM operation. Ongoing discussions with Jianming and Xavier

# Slow controls II

---

- Not possible at this point to monitor through DCS additional quantities:
  - SiPM bias voltage and current
  - DAPHNE temperatures
  - DAPHNE-DAQ synchronisation
  - ...
- This will be done through online monitoring using DAPHNE spy buffers
  - Scripts available (Manuel)
  - Working on a user friendly interface

# Run plan

- Preliminary run plan available with description of the different configurations

<https://docs.google.com/document/d/1mQsr1uxxwAuwMQ7IffBRHQ15HBT72zaVZ70qr7zIAzQ/edit?usp=sharing>

(credits: M. Arroyave, D. Christian, F. Terranova, D. Warner, A. Minotti, A. Cervera)

- Please have a look. Comments, suggestions welcomed (comment permission for everybody). We can further discuss it next week
- A summary with the relevant information will be sent tomorrow to DAQ group. Thus, early comments (tomorrow) welcomed

		February			March			April			May			June				
		purging			cool filling			purification			regular operation							
<b>Study</b>	<b>trigger</b>																	
IV curves and Vbd	none				d	d	d	d	d	d								
DCR	TI				d	d	d	d	d	d								
Light yield vs pur.	self										d	d	d	d				
Gain calibration	TI													w	w	w	w	w
Self-trigger efficiency	TI+self																	
Light yield map with laser	self												?			?		
Physics	self																	

d=daily, w=weekly, TI=Timing interface command