

## LOCATION

Address:  
The Royal Society  
6-9 Carlton House Terrace  
London  
SW1Y 5AG

## INSTALL

30th June - 1st July

## EXHIBITION DATES

2 - 6th July

## PERMISSIONS REQUIRED

To attach banners to drop down ceiling piece

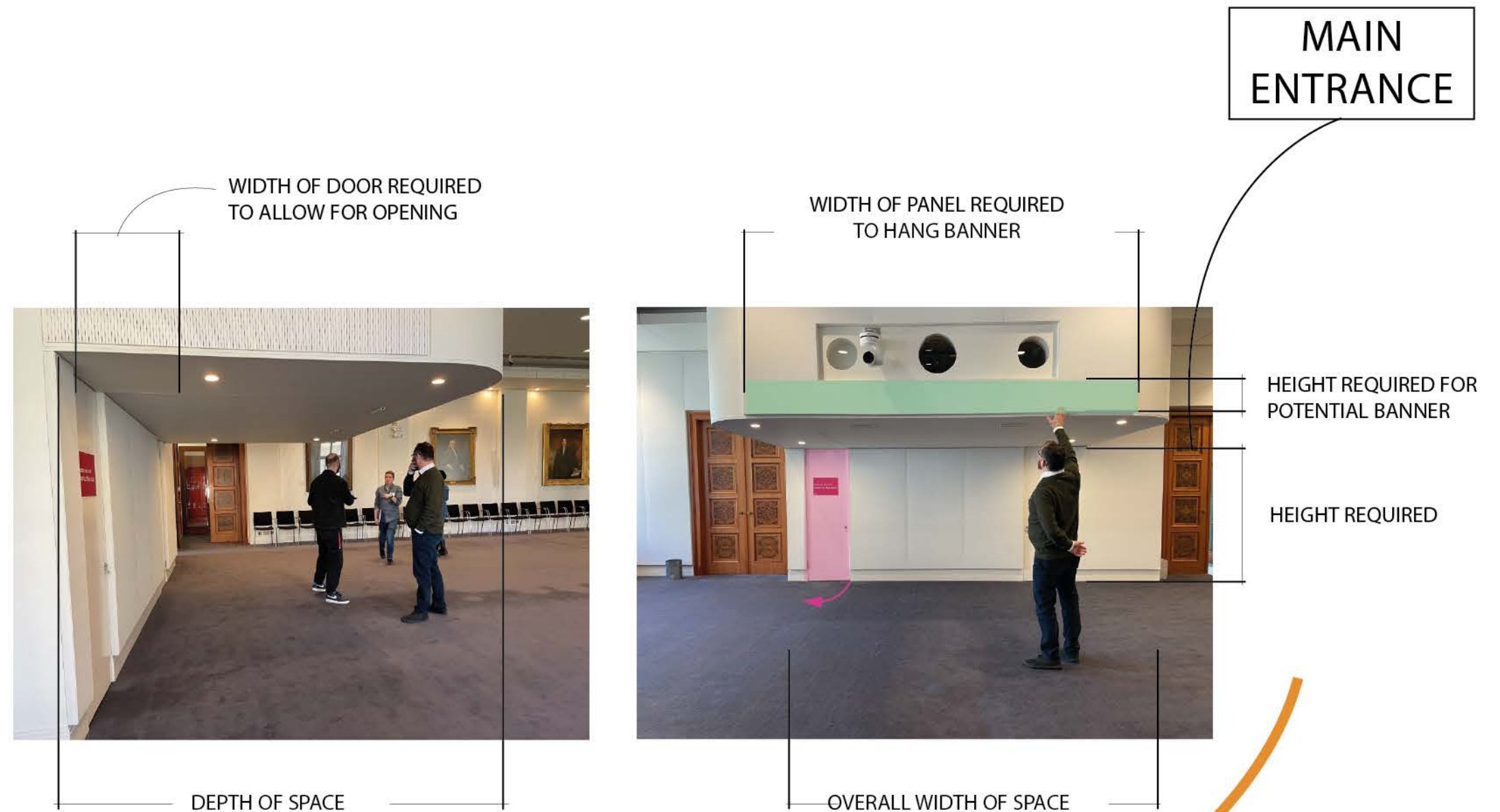
## INSTALL CHECK LIST

- Check access to the back wall
- PLUG points
- VARIOUS MEASUREMENTS REQUIRED
- VEHICLE ACCESS - Loading Bay
- WIFI Accessibility

## SHOPPING LIST

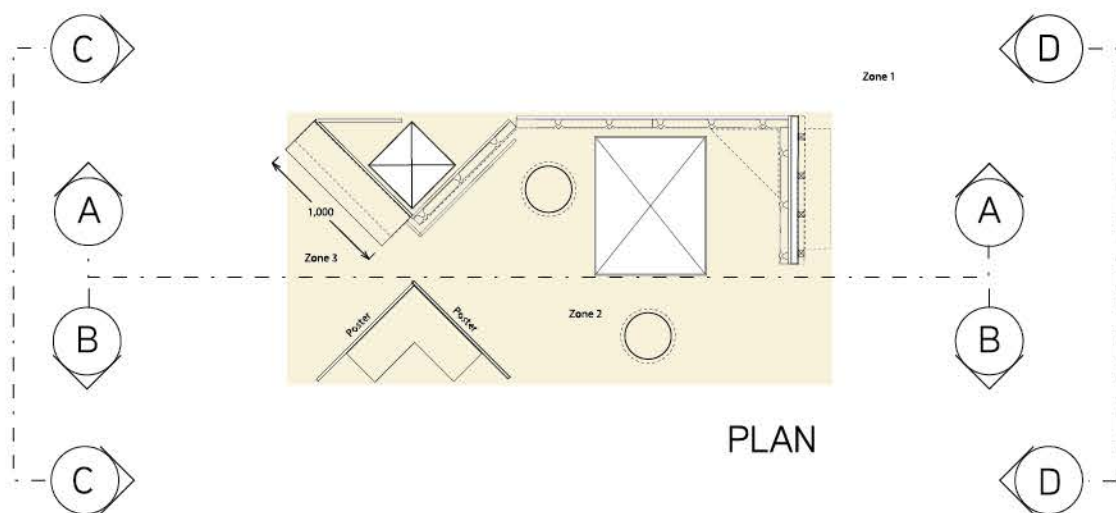
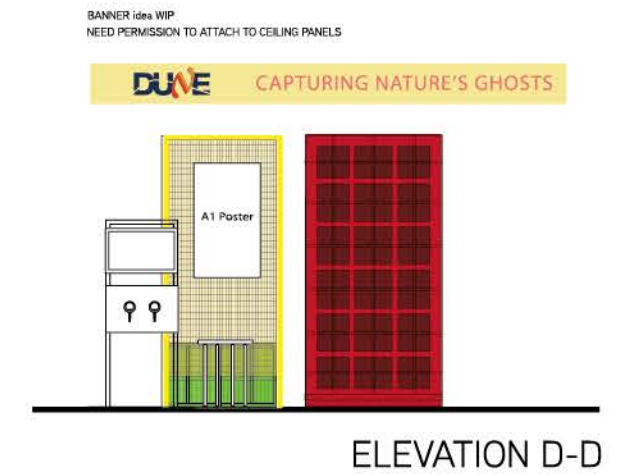
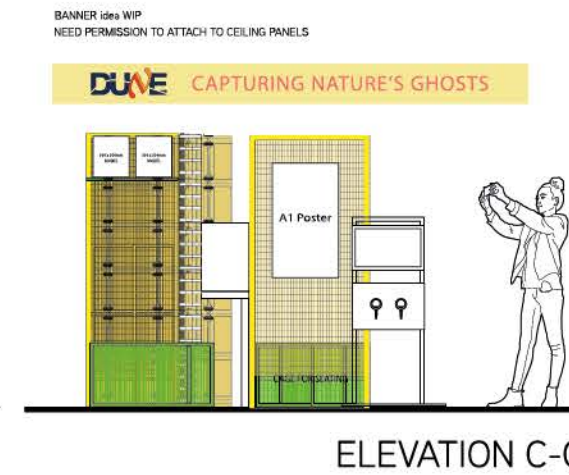
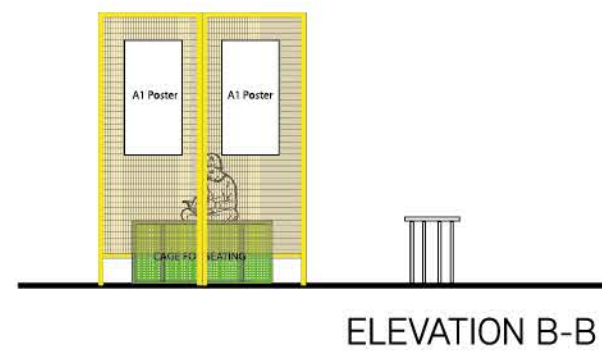
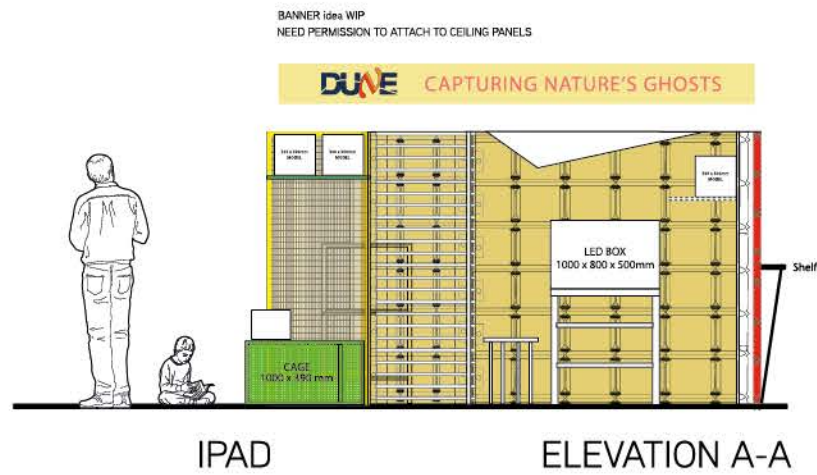
- MULTI plug extension leads
- TRIP mats to hide leads
- MINI TOOL KIT
- Cloths to clean screens
- Screen cleaner
- Fuses
- Extension leads
- Cable ties
- Gaffer tape
- Zip ties

## EXHIBITION ROOM

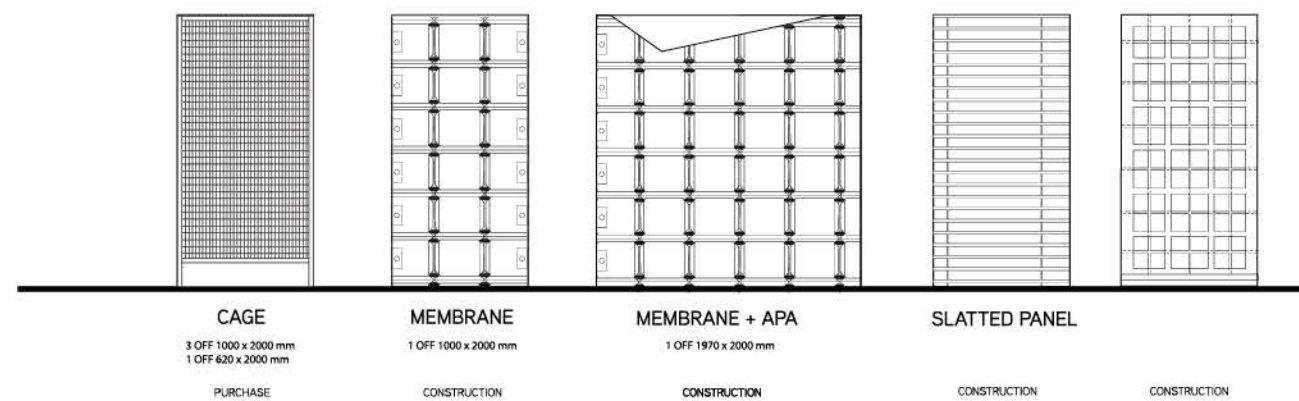


**AUDIENCE FLOW**  
RIGHT TO LEFT FROM MAIN ENTRANCE

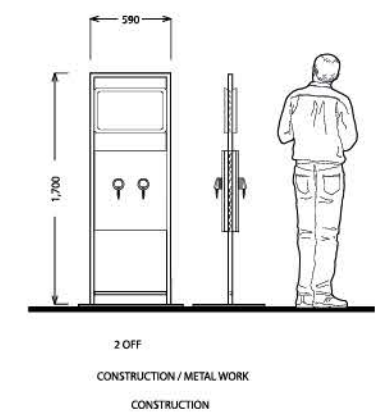
## PLAN



### PANELS

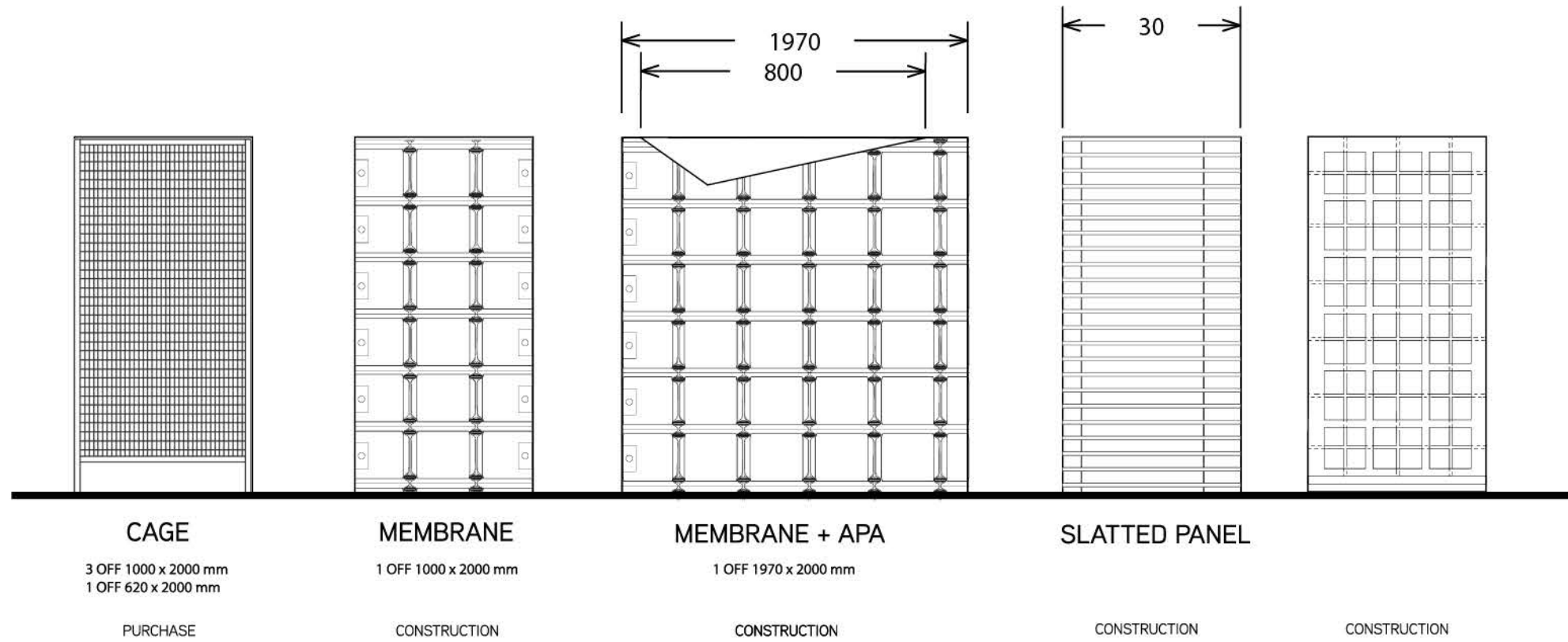


### METAL STANDS:



MOBILE MONITORS  
WITH EAR CANS

## PANELS / MATERIALS 1



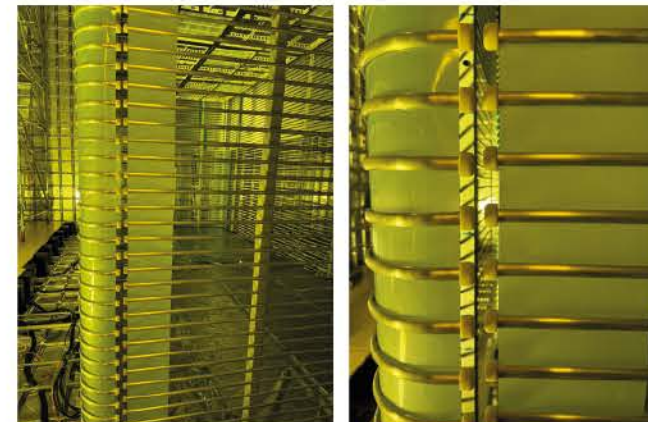
### PANEL REFS:



METAL GRIDDED PANEL



MEMBRANE



SLATTED PANEL & CORNER CURVE



EXT. BRACED PANEL

## DEVELOP DESIGN

Introduce an 'abstract' shape in front of the membrane panel to show part of an APA screen.

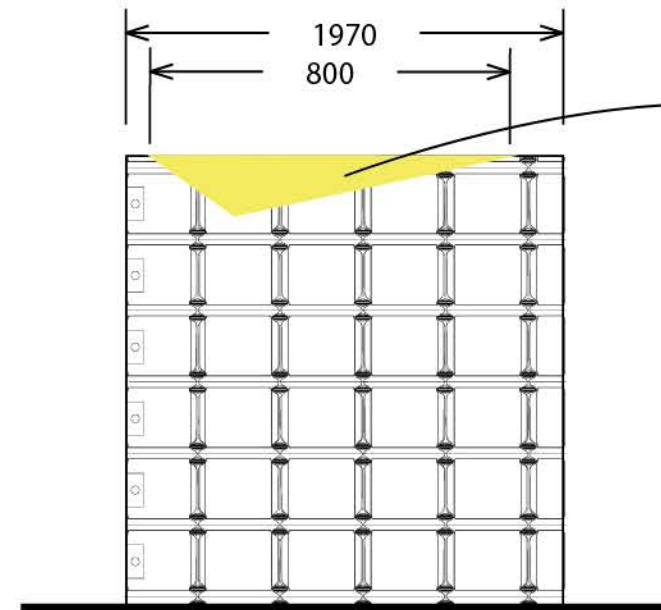
This shape can be bigger and or a more realistic oblong shape.

## LINK

with handheld panels to be made by Warwick University

## PANELS / MATERIALS 2 - APA SCREEN

ANODE PLAN ASSEMBLY MODULE



PART OF APA PANEL



MEMBRANE + APA

1 OFF 1970 x 2000 mm

CONSTRUCTION



12 / 44 Anode Plane Assembly

## REFS:



## FLOORING

### CONSTRUCTION

4 x 2m printed flooring  
Roll or panels as tiles  
32 OFF 0.5m sq panels

### RUTTERS

<https://ruttersuk.com>

Artwork or photo?  
Would need a hi-res photo or artwork?

Printed material 1mm Gorilla Floor Lite

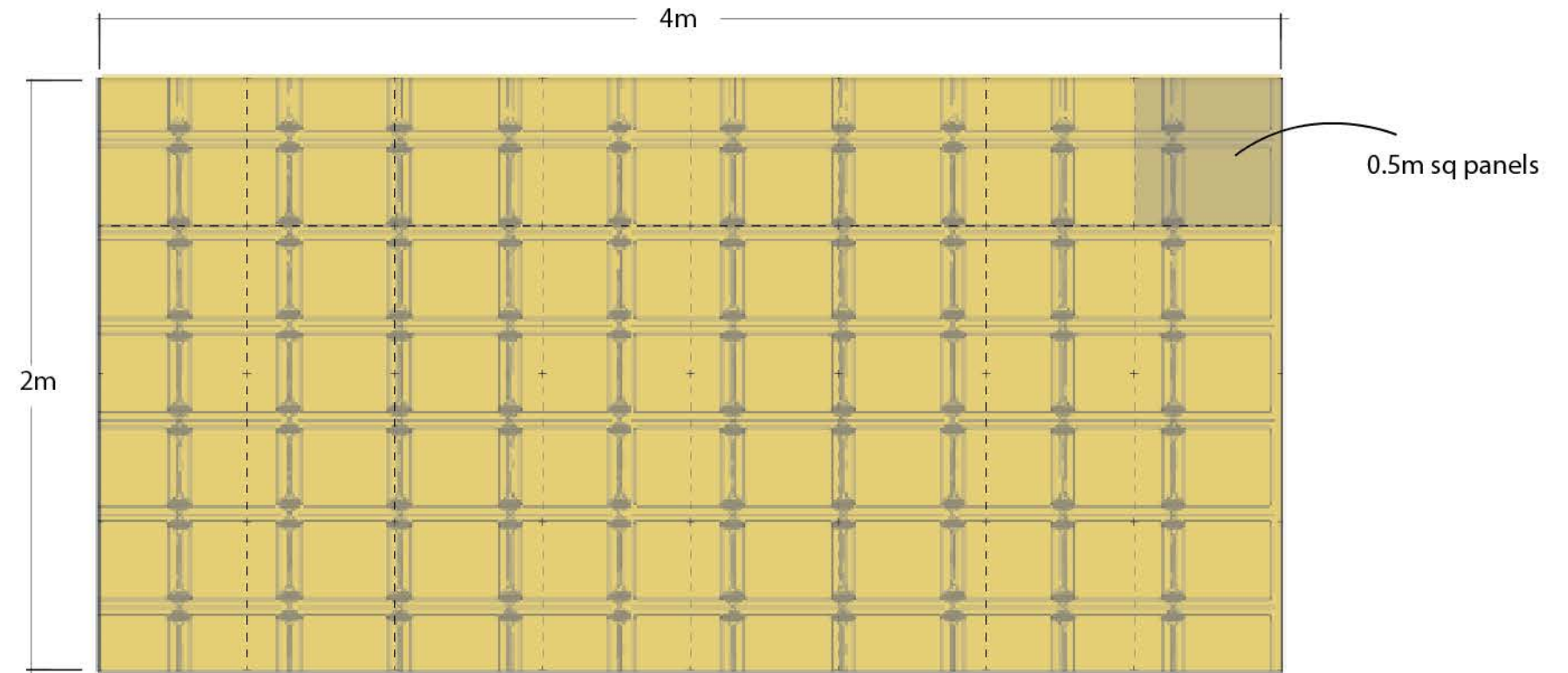
Can be rolled but need to be aware of temperature  
If unwrapped cold may break.

### LEAD TIME

10-14 days

### SHOPPING LIST

Special adhesive to be used to stick to panels



REF:



## MAKES (cont.)

### APA SAMPLES

Hand held sheets with 3D pen contour lines in various directions and colours. One separate set to be put together so the sheets lie on top of each other as a whole

### TACTILE NEUTRINOS

Family set of newly designed neutrinos made out of interesting soft material for the younger audience. Influenced by the Particle Zoo soft toys with a modern updated feel. To be hand held.

### MARBLE GAME

Random colour change of marbles once travelled, printed front face with holes cut out to reveal marbles. Hang off yellow mesh panel.

### PIN BADGES

Design

### LAB COATS

Purchase from CERN

### HARD HATS

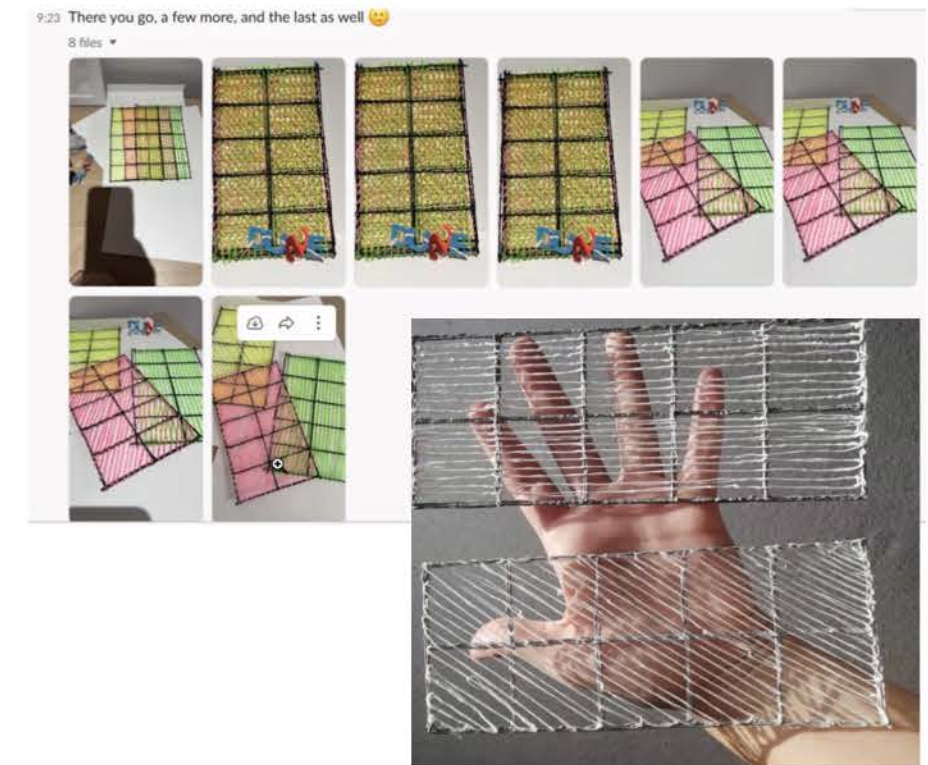
Purchase from CERN

## CRAFTED EXHIBITS

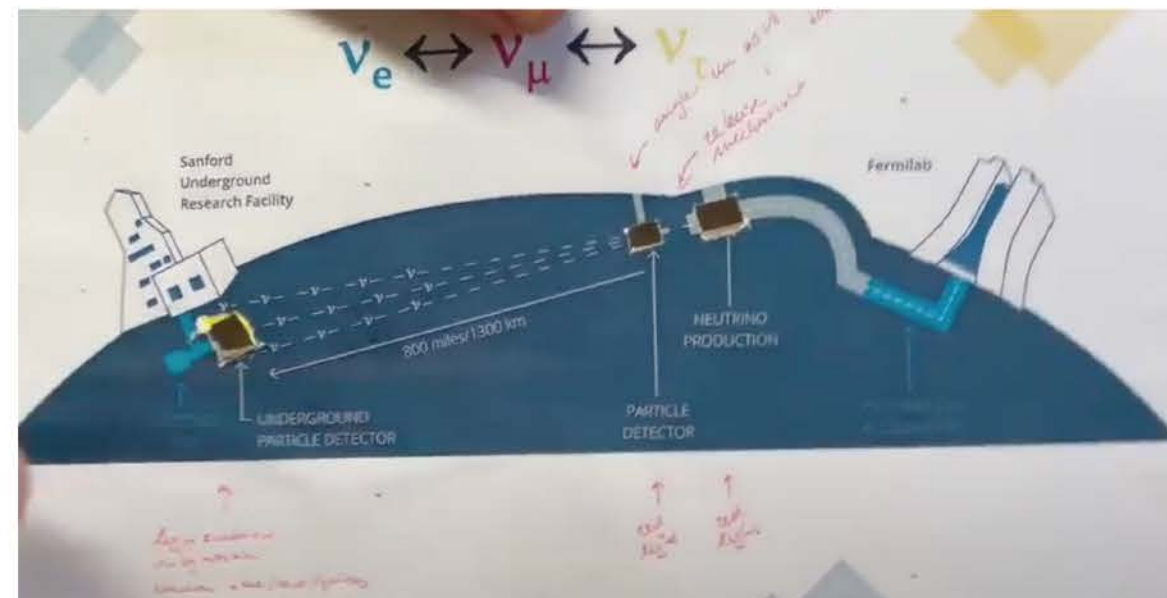
### NEW DESIGN NEUTRINO FAMILY:



### APA SHEETS:



### MARBLES CHANGING COLOUR:



### PIN BADGES:



## STOOLS

Purchase

## CAGES

Purchase cages and customise for exhibition  
Used as seating and to rest exhibits on  
Used as storage

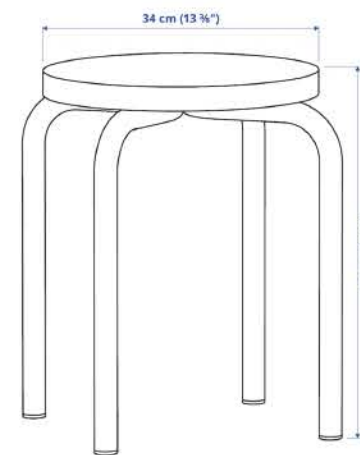
## SHELVES

Discuss as part of construction

## ATTACHMENTS

Look at hooks and various implements to attach items to panels (hooks for lab coats and hard hats, hang marble game at height).

## STOOLS / CAGES / SHELVES



## CAGE REF (needs a lid!)



## CONSTRUCTION

2 OFF TUBULAR METAL FREESTANDING MONITOR AND HEADPHONE STANDS INSPIRED BY CERN EXHIBITION

Construct boxes to hold ear phones and audio equipment

## VR DUNE

## SHOPPING LIST

Either purchase or find 4 off suitable monitors.

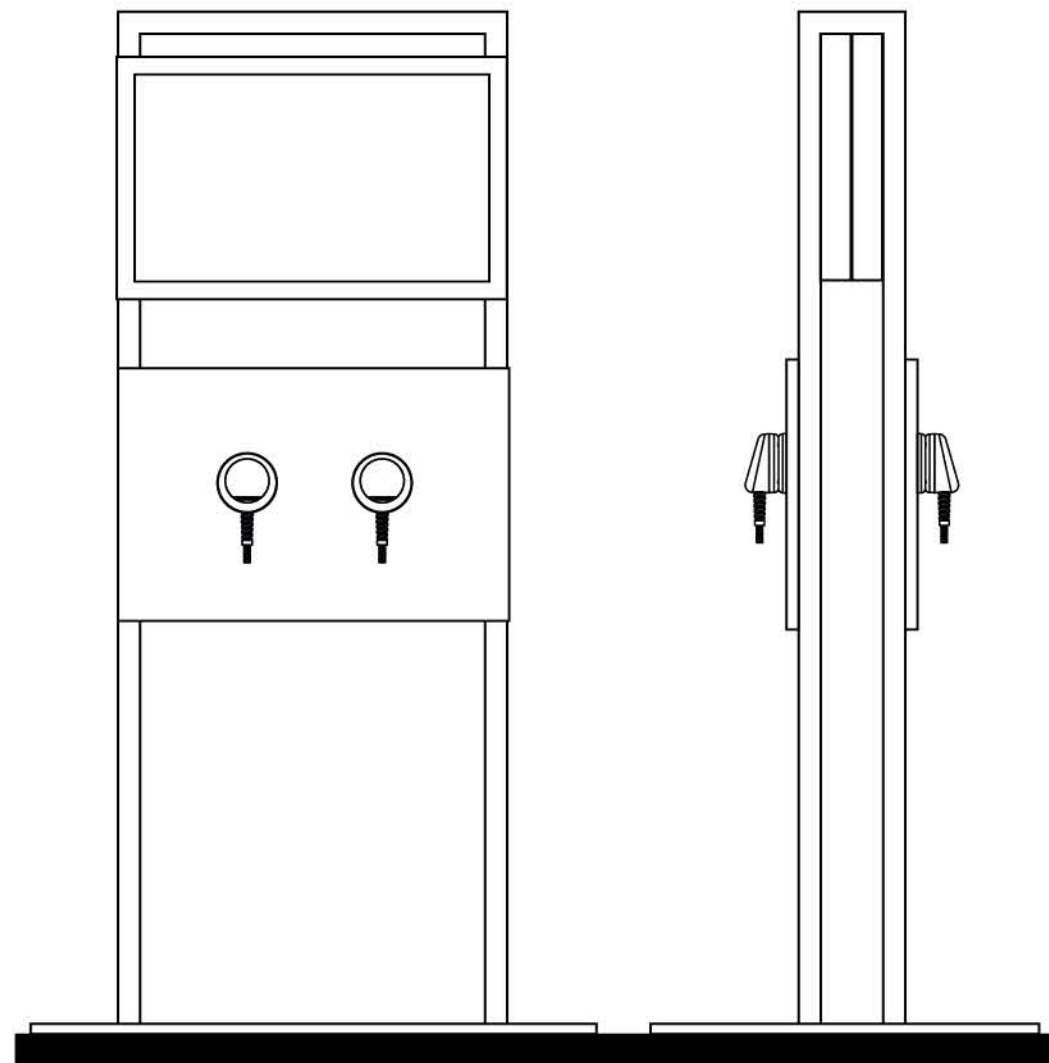
Purchase Magnetic ear cans

Purchase Ipad for interactive game



## AUDIO & DIGITAL / INTERACTIVE WORK

### MONITORS WITH EAR CANS



### MAGNETIC EAR CANS



#### Magnetic Hanger

The magnetic hanger offers an elegant and simple-to-use storage solution. We have optimised the magnetic pull force so that it is easy to remove with minimum effort, and equally straightforward to replace. This makes The Heavy Duty Handset ideal for children or adults.

### VR DUNE



REF:  
STANDS FROM CERN EXHIBITION





## MAKES:

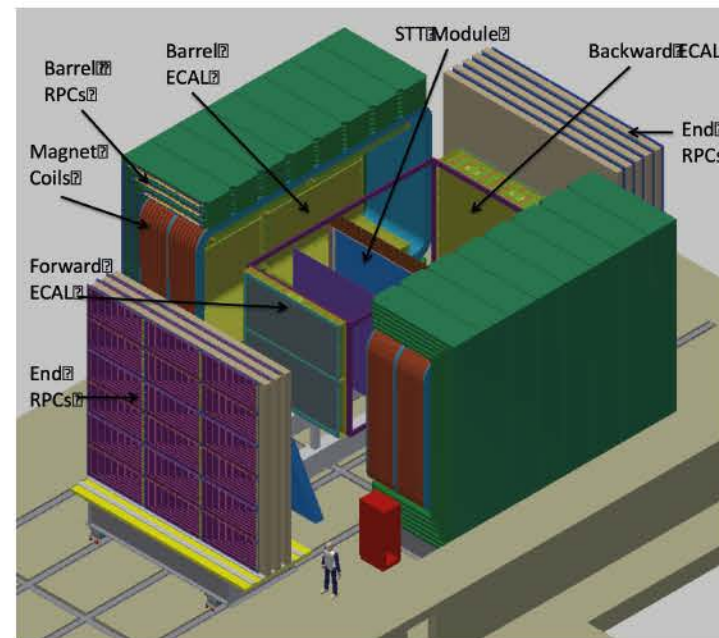
### LED BOX

dimensions tbc  
 Approx 1000 x 700 x 400 mm  
 Placed on a stand with shelves  
 Perspex box surrounding

### protoDUNE

2x scale 3D printed models  
 Perspex boxes  
 To be resting on shelves (part of integral design)

## CRAFTED EXHIBITS



## CHECK LIST

### POSTERS

Photos - Faces of Dune  
 Map of Institutions  
 Diagram of deep underground DUNE  
 Standard Model poster

### BANNERS

Exhibition banner - lightweight. Need permission to hang on ceiling piece as per shown on pg 1.

### ILLUSTRATIONS

Colouring-in sheets for younger audience

### BROCHURE

Printed brochure with photos and text  
 Infographics designed

### LEAFLETS

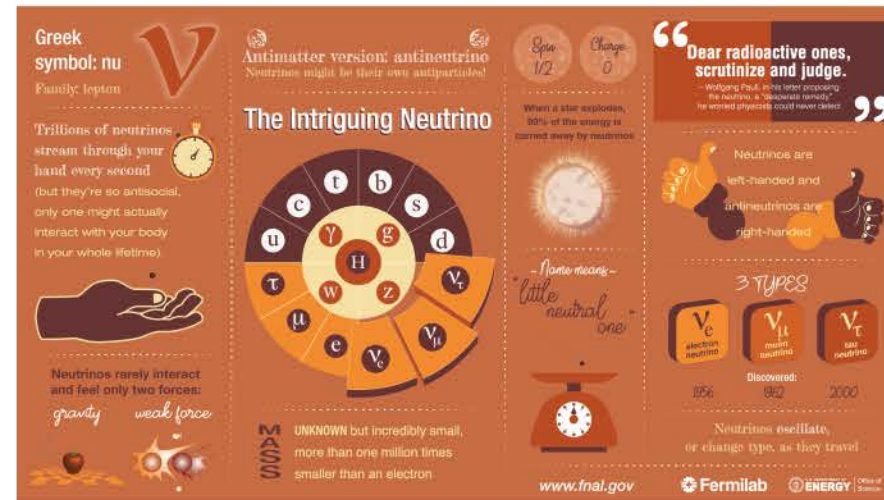
To hand out freely

### VINYL CUT LETTERS

For exhibits, to help explain the narrative

## PRINTED MATTER

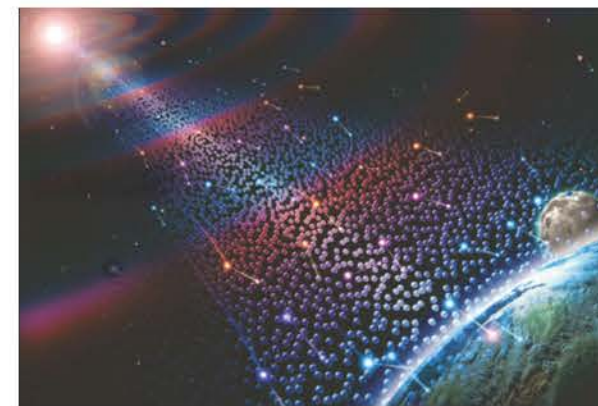
### STANDARD MODEL REF:



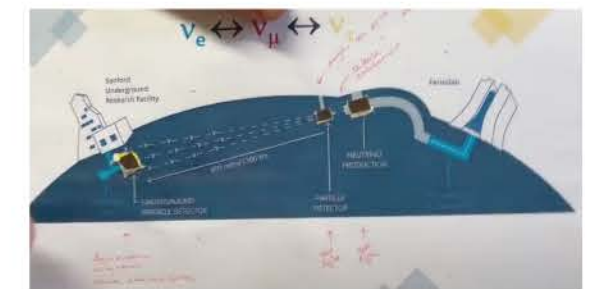
### MAP REF (SHOULD BE UK):



### NEUTRINOS REFS:



### MARBLE GAME:



### BANNER (WIP)

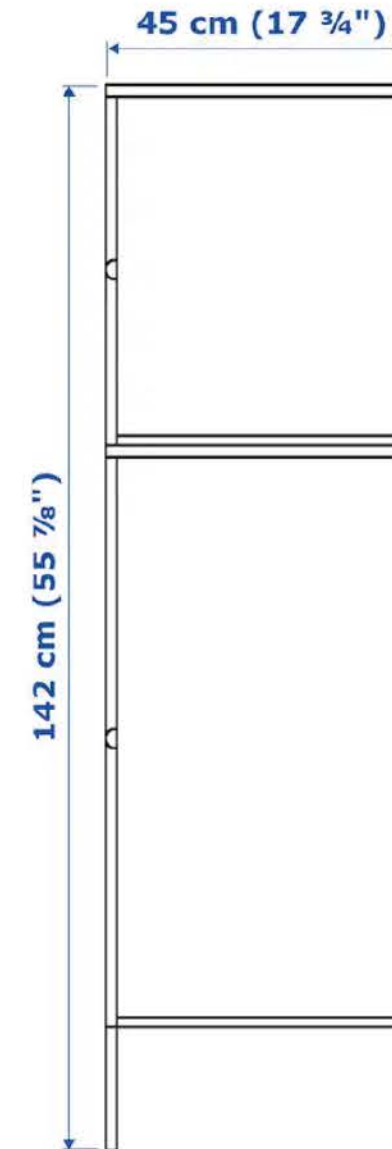


## VOLUTEER & PACKAGING REQUIREMENTS

### SHOPPING LIST

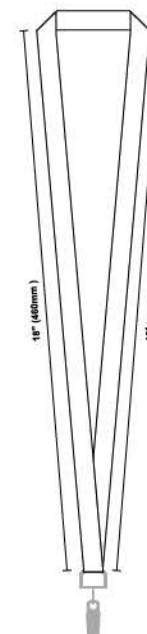
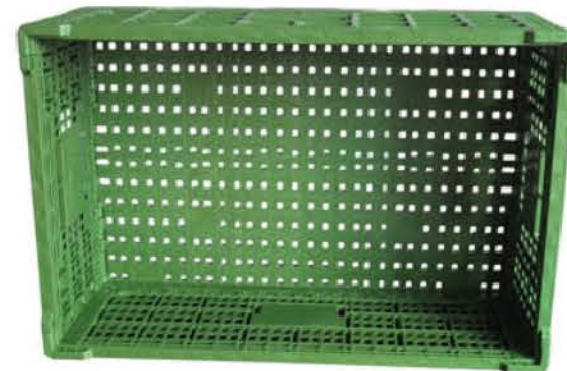
- Locker
- Locks
- Printed water bottles
- Printed t-shirts
- Printed lanyards

### PORTABLE / MODULAR REF:



### PACKAGING FOR TRAVEL

- Design exhibition elements to be packed down
- Easily transportable



## PERMISSIONS TO REPRODUCE:

FERMILAB  
Logo  
Artwork

## LITERATURE AND ARTWORK PERMISSIONS

### LOGO



### FERMILAB ARTWORK

