



# 2x2 Demonstrator Update

Kevin Wood, [kwood@lbl.gov](mailto:kwood@lbl.gov)

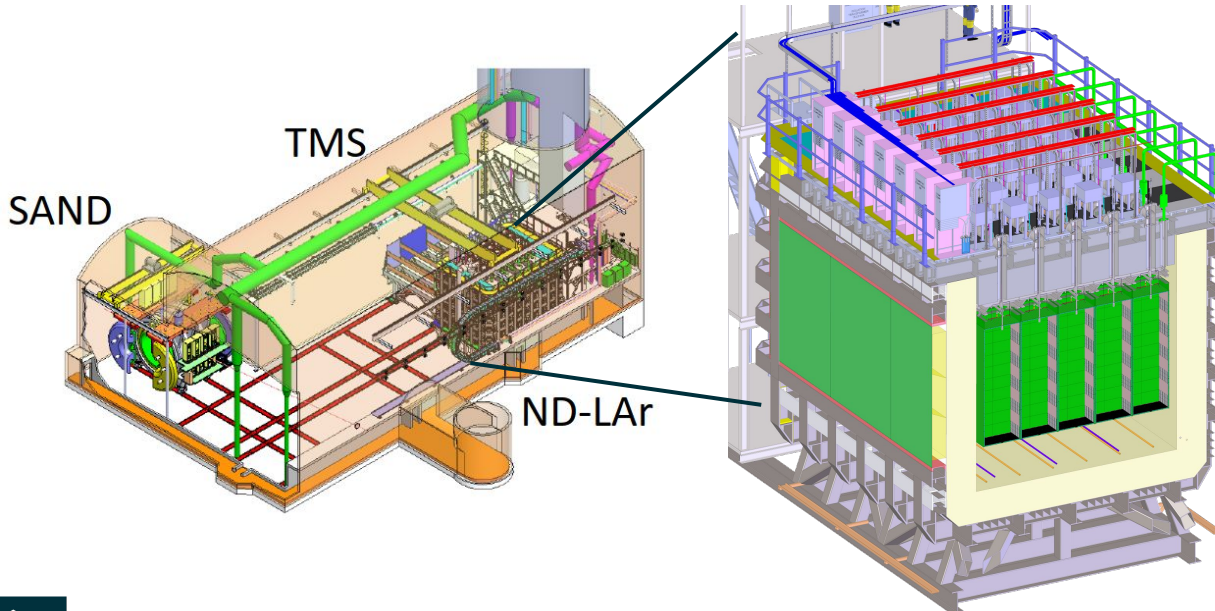
Luis Zazueta, [lazazueta@syr.edu](mailto:lazazueta@syr.edu)

FNAL Proton PMG / All Experimenters' Meeting

April 4, 2024

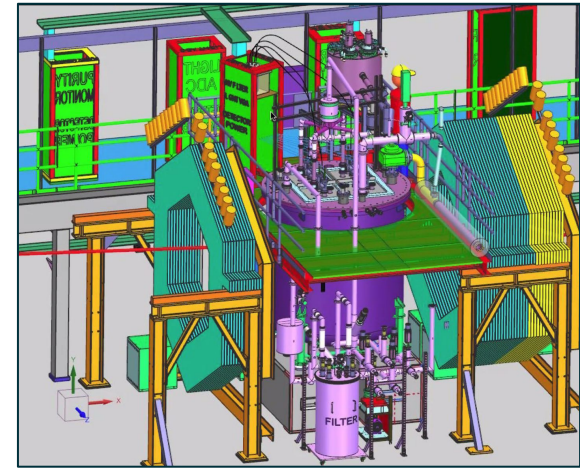
# Overview

- Prototype / Demonstrator for ND-LAr, DUNE's LArTPC near detector component
  - 4 modules, each of which are ~60% scale (35 modules in ND-LAr)
- 2x2 is situated in the NuMI beamline: DUNE's first neutrinos!



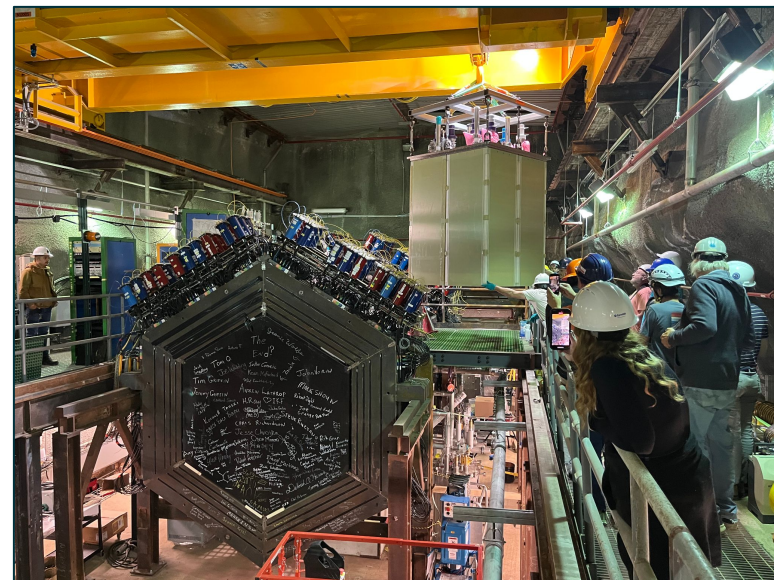
2x2 Demonstrator

2x2 Demonstrator



# Current Status

- 4 Modules have been assembled and validated in cosmic data taking runs at Bern from 2021-2023
- Modules installed into the MINOS underground area October 2023
- Still have ~1 week worth of installation tasks to complete before LAr fill, but currently do not have access to the hall due to the primary elevator being out of service
- Conducting as many commissioning tasks as we can in parallel so we can transition to stable operations as soon as possible



# Recent Activities

- Charge readout system is cabled up to the detector and all the controls are in place to exercise this system (without underground access)
- Using this opportunity to commission the system and exercise continuous readout with shifter support
- Pedestal runs, self-triggering runs



# Recent Activities

- Charge readout system is cabled up to the detector and all the controls are in place to exercise this system (without underground access)
- Using this opportunity to commission the system and exercise continuous readout with shifter support
- Pedestal runs, self-triggering runs

