



STT gas flow inside the manifold

Otari Kemularia

Georgian Technical University, Tbilissi, Georgia

17 April 2024

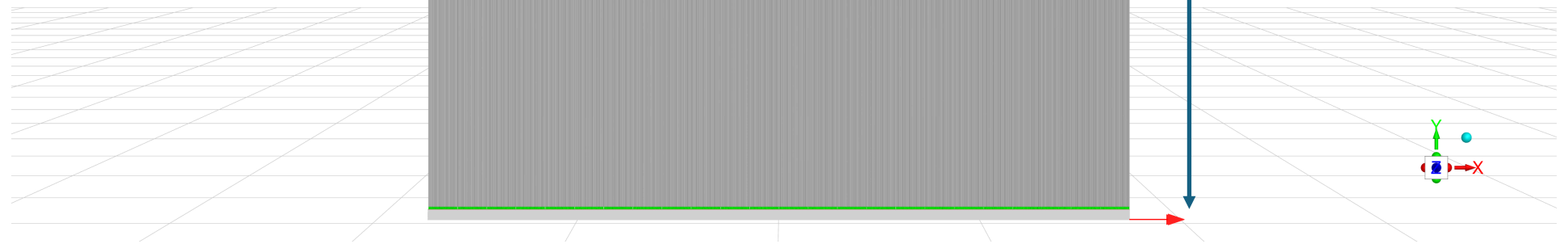
R. Petti, O. Kemularia

Frame domain consisting of 24 PCBs

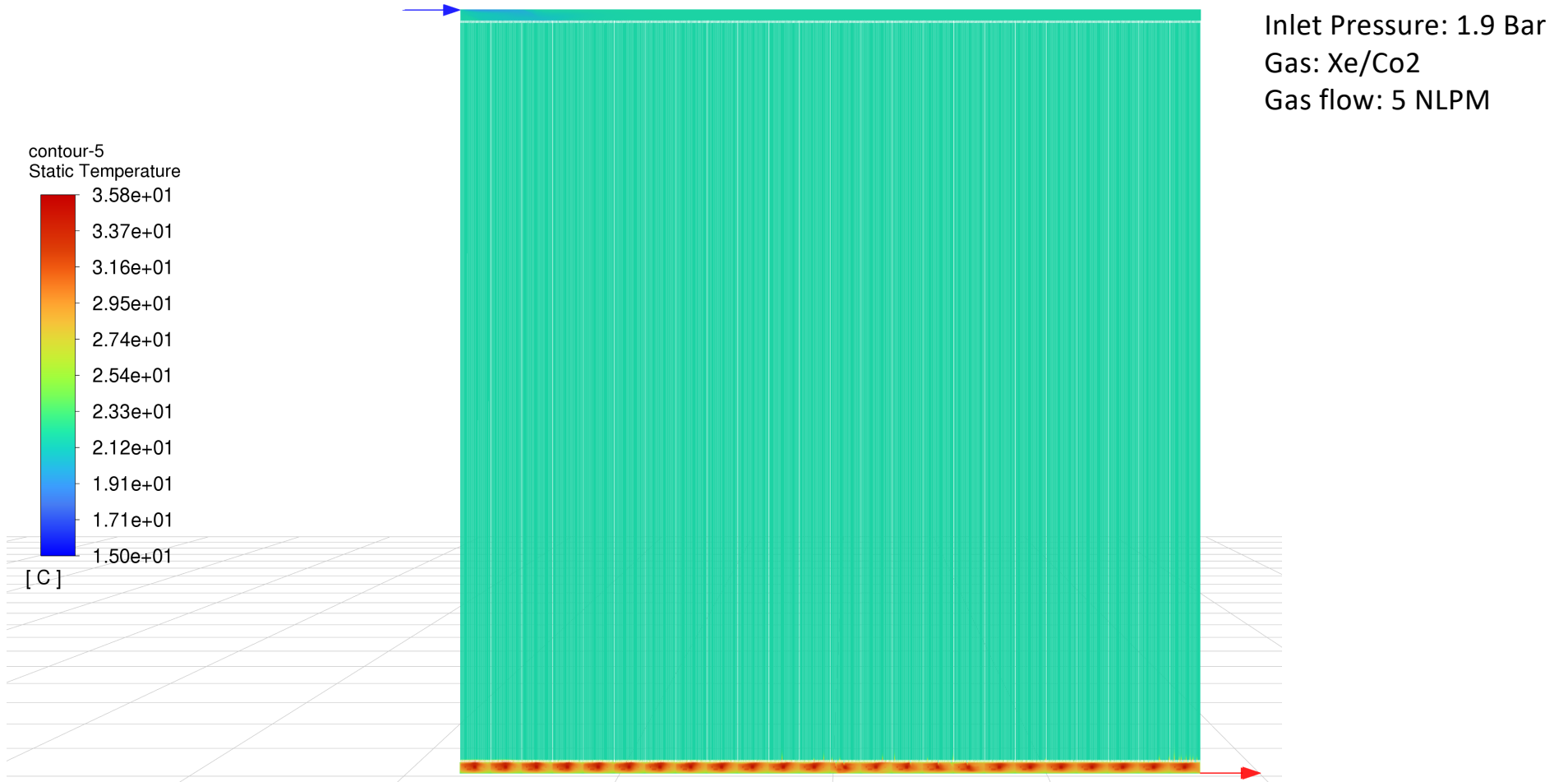
3840mm

4000mm

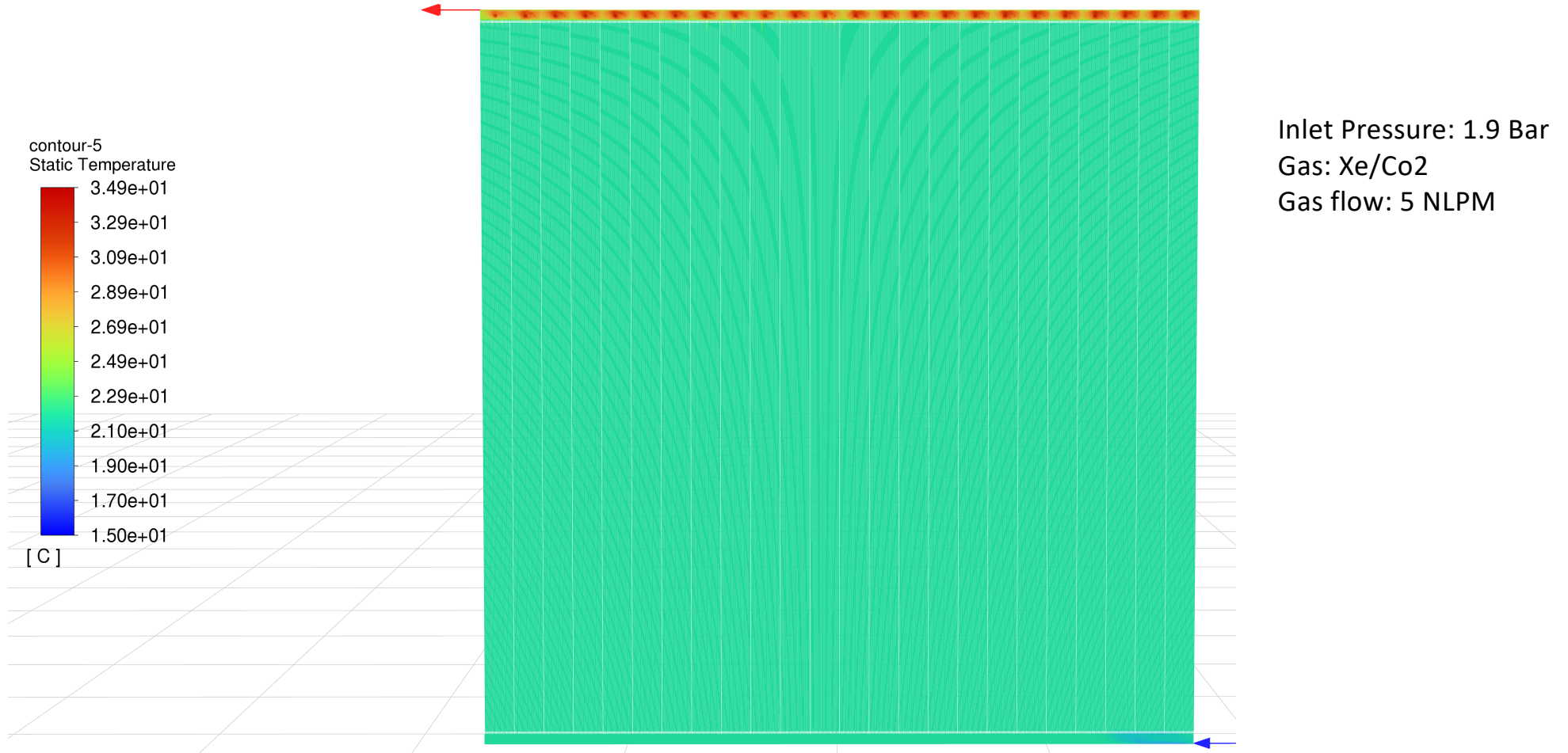
Inlet Pressure: 1.9 Bar
Gas: Xe/Co2
Gas flow: 5 NLPM



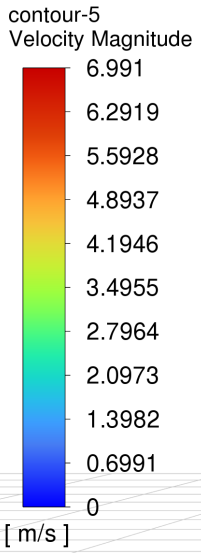
Temperature Contours in the Domain



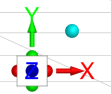
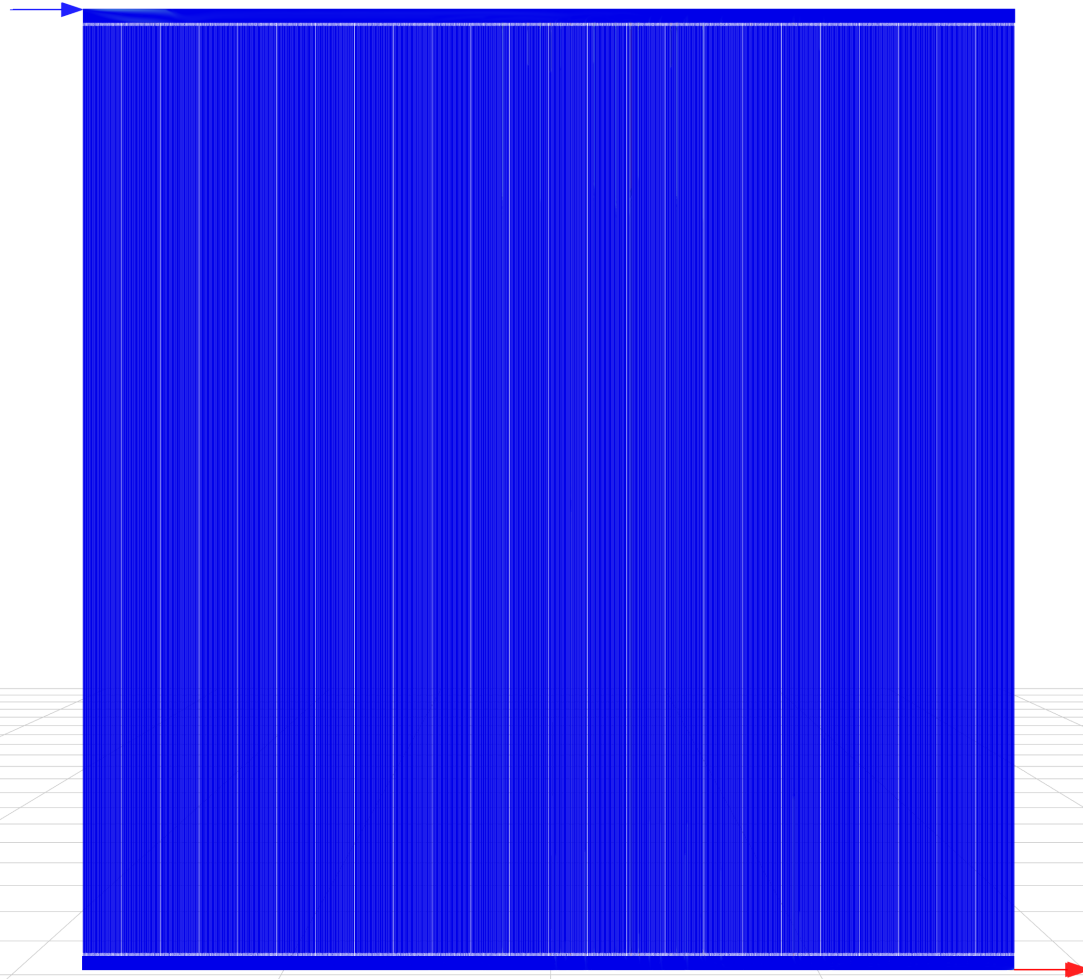
Temperature Contours in the Domain (Flipped)

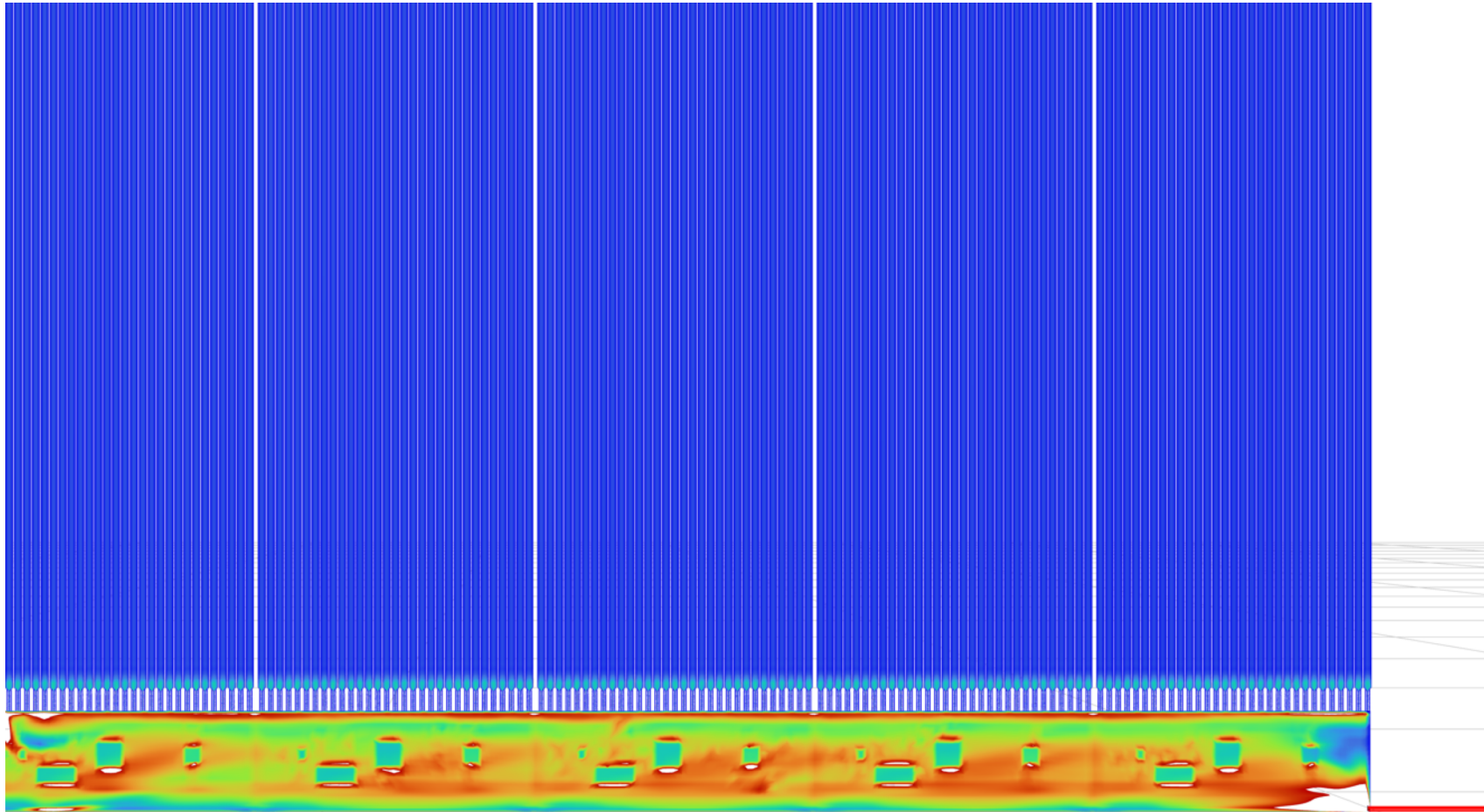


Velocity Distribution



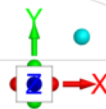
Inlet Pressure: 1.9 Bar
Gas: Xe/Co2
Gas flow: 5 NLPM



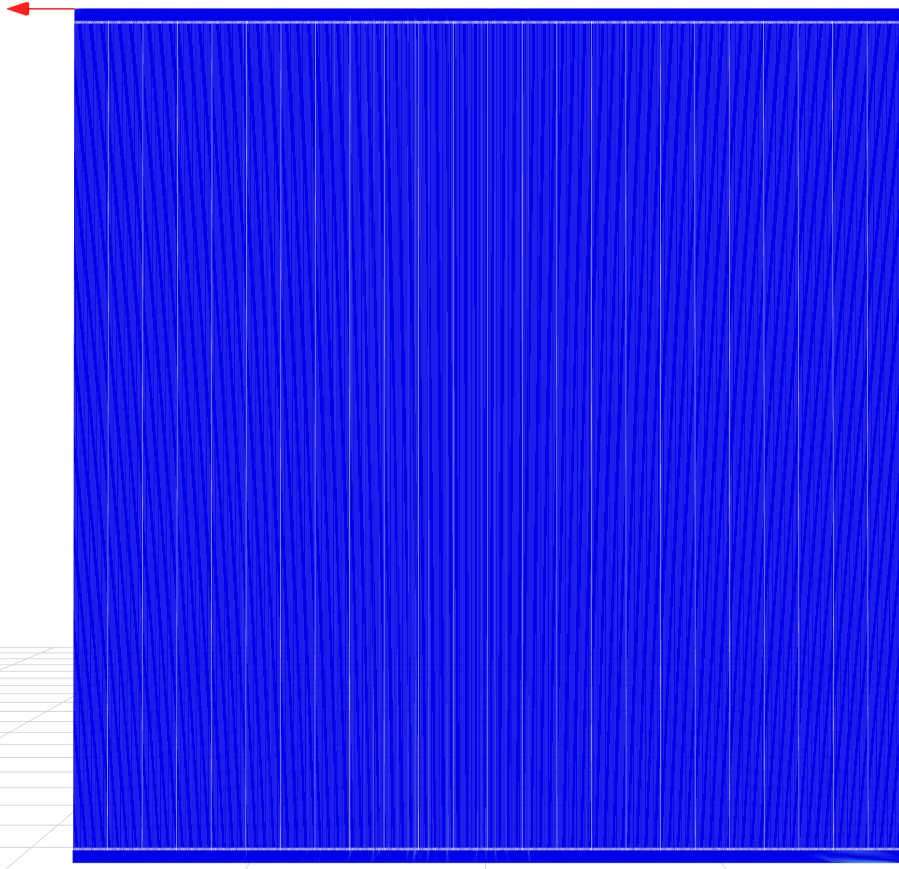


-5
/ Magnitude [m/s]

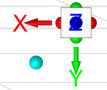
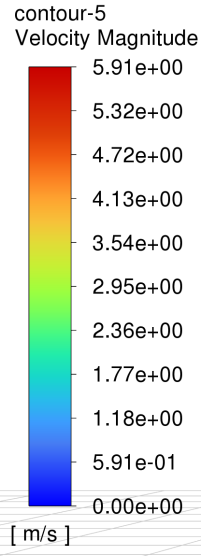
0 0.01 0.02 0.03 0.04 0.05 0.06 0.07 0.08 0.09 0.1



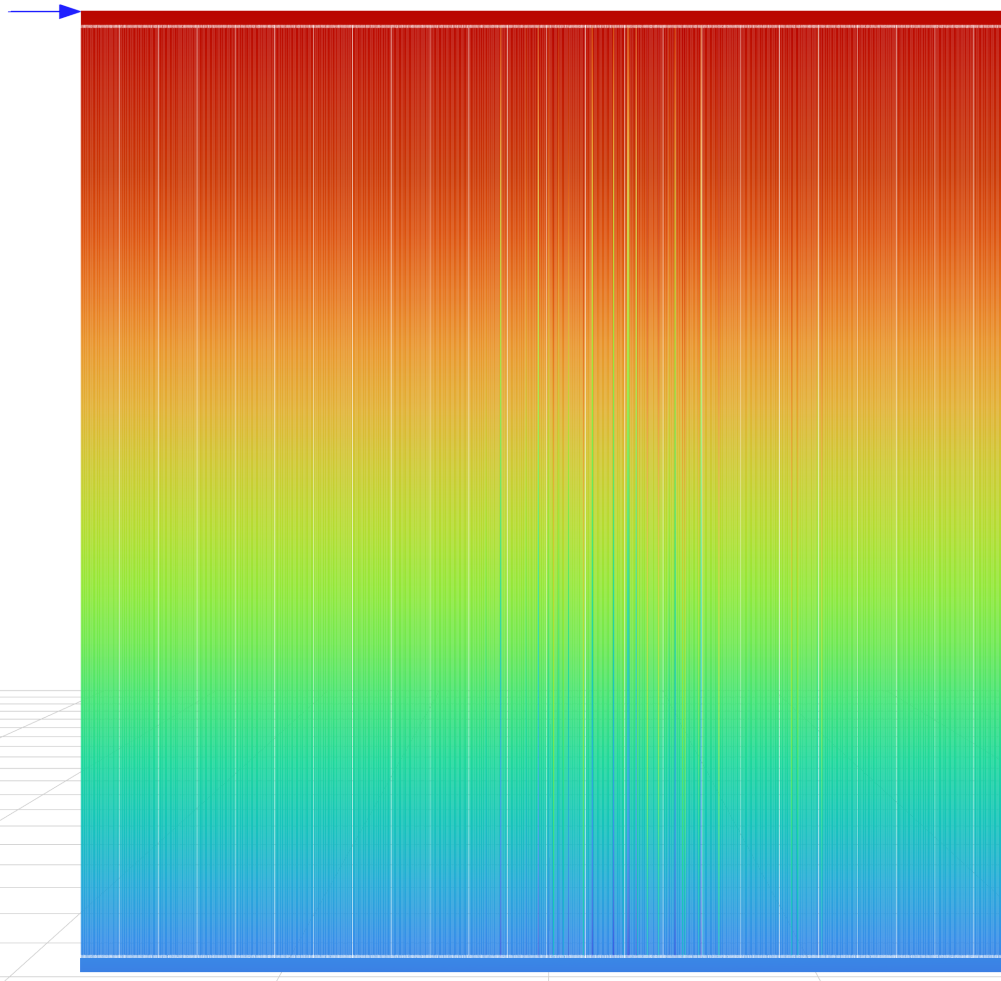
Velocity Distribution (Flipped)



Inlet Pressure: 1.9 Bar
Gas: Xe/Co2
Gas flow: 5 NLPM

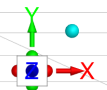
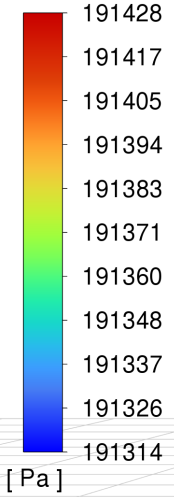


Absolute Pressure

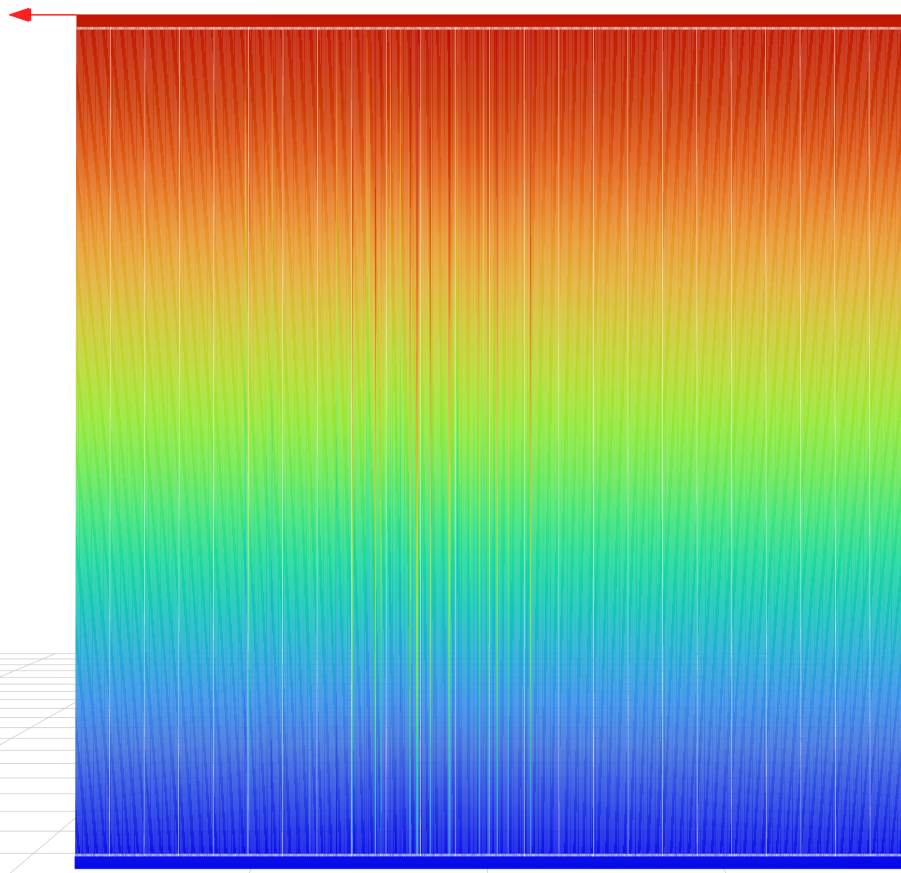


Inlet Pressure: 1.9 Bar
Gas: Xe/Co2
Gas flow: 5 NLPM

contour-5
Absolute Pressure

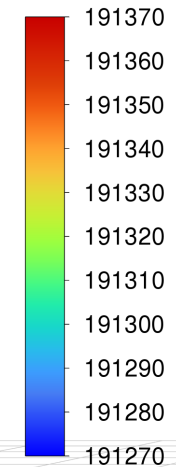


Absolute Pressure (Flipped)



Inlet Pressure: 1.9 Bar
Gas: Xe/Co2
Gas flow: 5 NLPM

contour-5
Absolute Pressure



[Pa]

