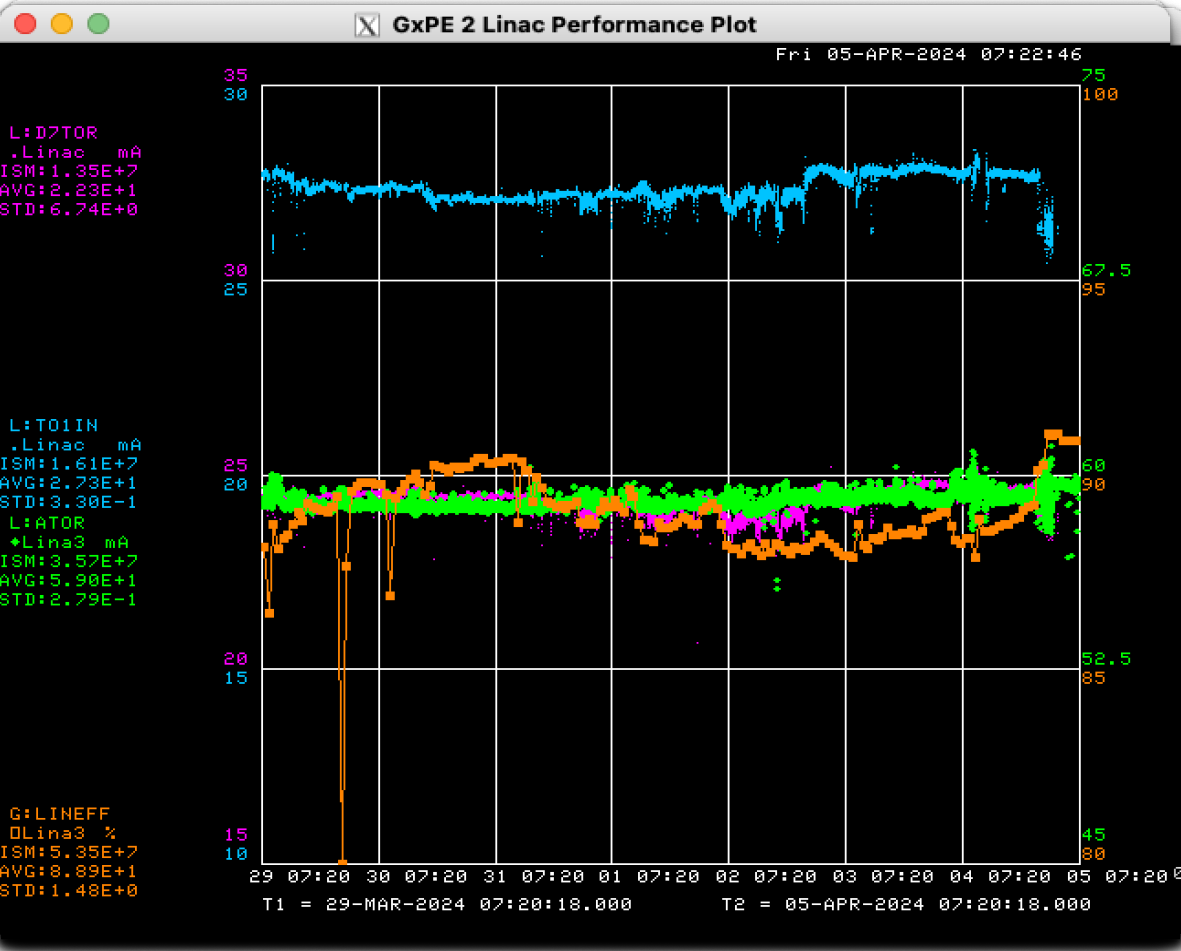
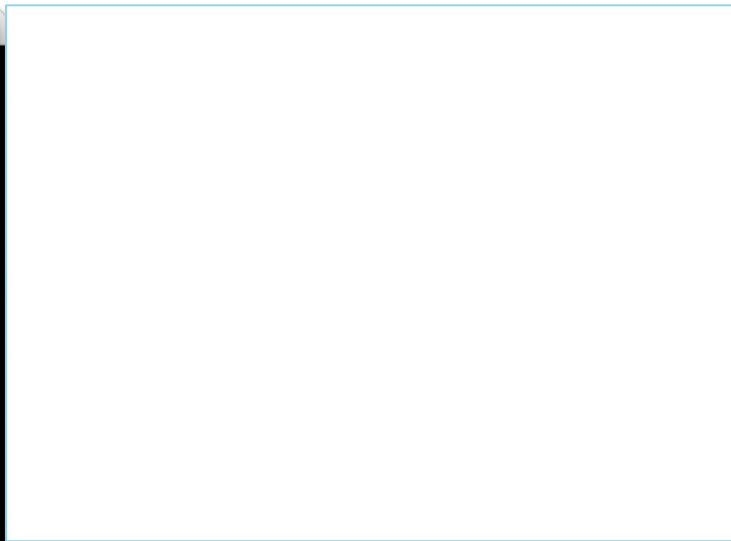


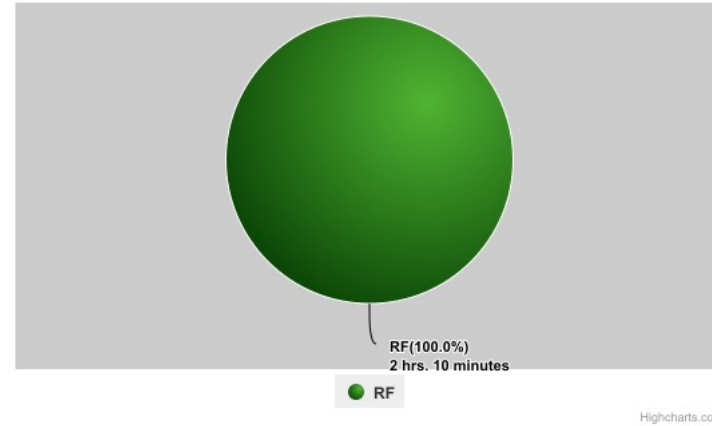
Preacc/Linac Weekly Performance



- Sun: LRF1 OI, LRF4 ZOV
- Mon: LRF4 OI, LRF1 OI
- Tue: LRF4 cell trip, LRF1 OI
- Thur: LRF5 DA OL, ZOV, OI, driver tuned



SYSTEMS Downtime
 refined by LINAC, Beam_Inhibit_Failure
 from 3/29/2024 07:23:28 to 4/5/2024 08:00:00 (168.6 hrs.)

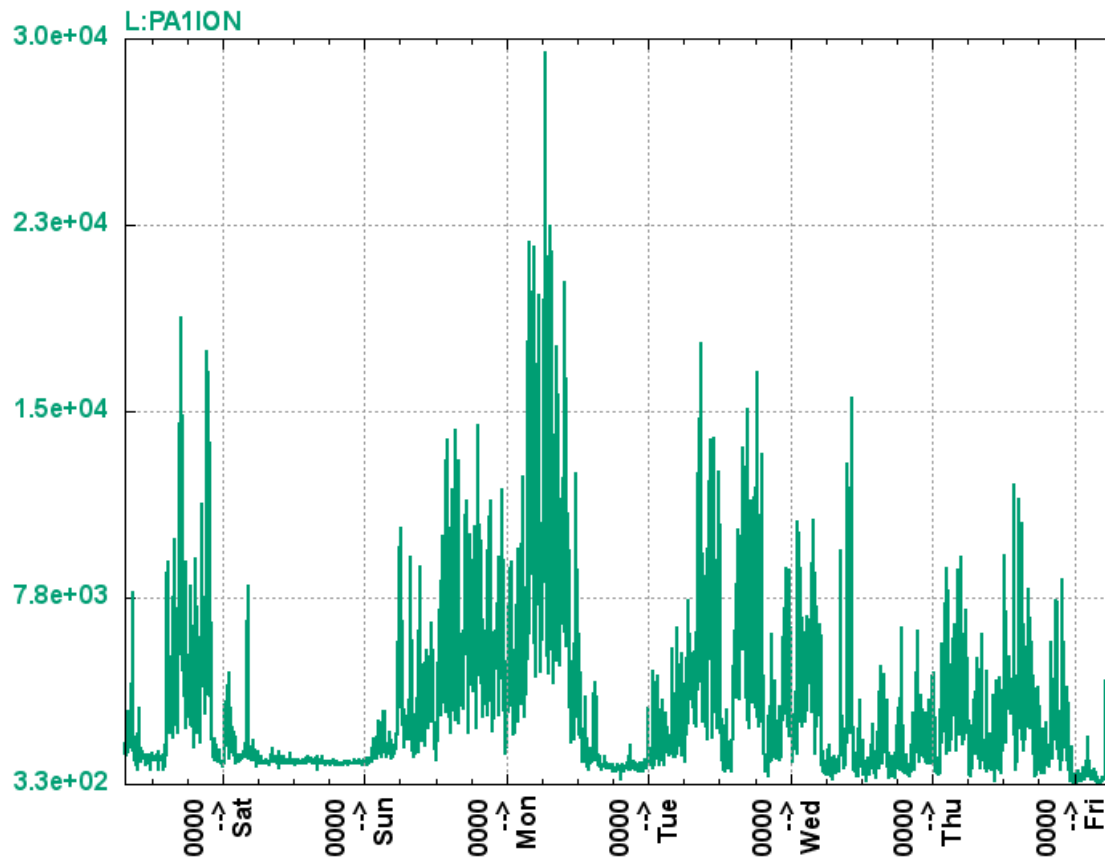


All week:
 KRF2 & KRF5 CS fault



LRF1 Vacuum

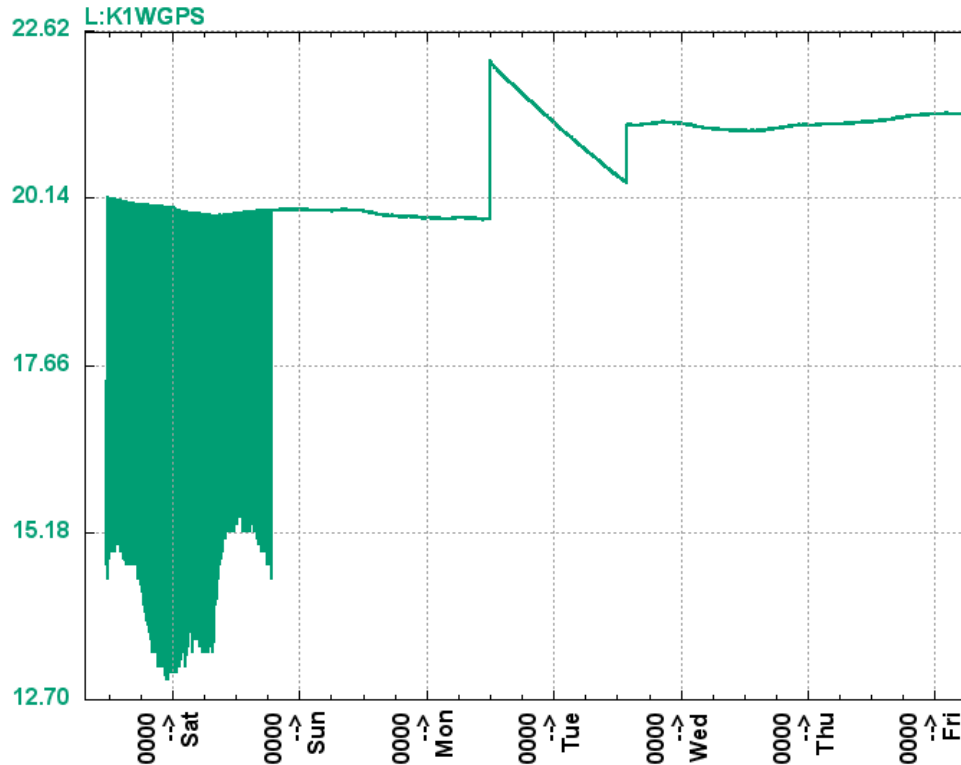
- PA vacuum has seen frequent bursts of vacuum activity since tube replacement
- Mon: increased filament current to try & improve
 - Hard to tell yet, but may be helping



From Fri Mar 29 07:27:24 2024 to Fri Apr 5 07:27:24 2024 168.00 hours = 7.00 days

KRF1 Waveguide pressure

- Pressure regulator replaced 3 weeks ago
- Pressure drop still much faster than other systems
 - One possibility is filter needs replacement
- After adjustment Monday started dropping very fast, adjusted again Tue
 - More stable now, but may still want to swap filters with another station to confirm effect



From Fri Mar 29 07:27:56 2024 to Fri Apr 5 07:27:56 2024 168.00 hours = 7.00 days

Current Conditions/Plans

Source A – 59 mA

Linac input – 27 mA

Linac efficiency – 89%

Opportunistic downtime work:

Swap out KRF1/KRF3 waveguide filter