

ESCC summer 2013 SLAC site report

Organizational changes since last ESCC

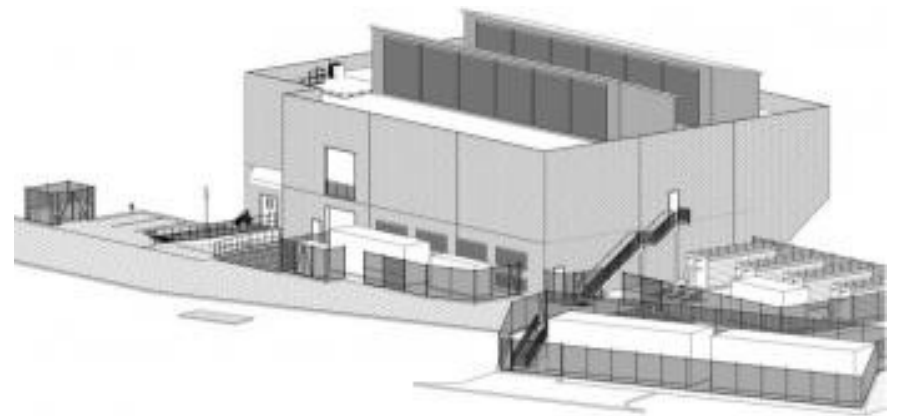
- Nan Spiers stepping down from post of Chief Security Officer
- Still looking to hire Head of Scientific Computing

Technical developments

- IPv6 phase 1
 - Progress constrained by Cyber requirements
 - v6 netflow collection; scanning
- IPAM
 - Open source NetDB: early prototyping phase
- Cyber Security initiatives

Stanford Research Computing Facility

- Stanford U is building a new “Research Computing” data center on SLAC land
- SLAC contracts a portion, initially 0.5 MW
- Dedicated resource for Scientific Computing
- Trying to acquire some modern Science DMZ
 - 100Gbps interface
 - Public 40Gbps DTNs



- BYOD not a new thing – traditionally, fairly little control on user endpoints.
 - looking at MDM solutions, in prototyping phase
- Wireless network architecture from year 2002
 - Wireless is guest-only, open network
 - Single L2, private vlan for isolation, no servers
 - Access to internal site resources via VPN/SSH etc
 - Address space usage steadily increasing, doubled in the last two years. Trying to avoid NAT, long term solution is IPv6...