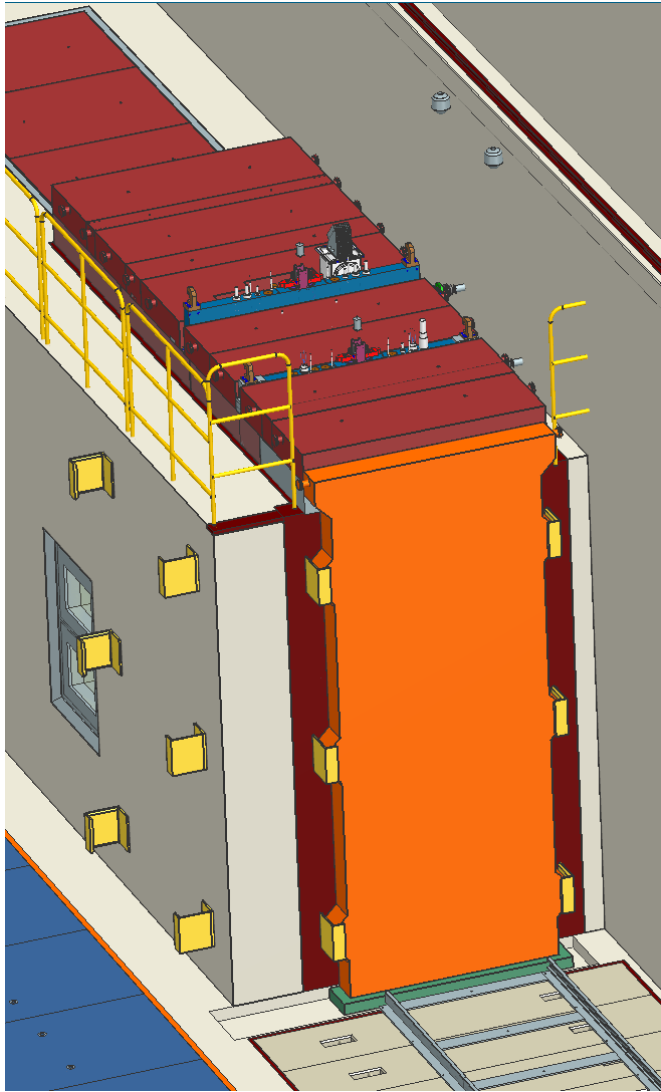
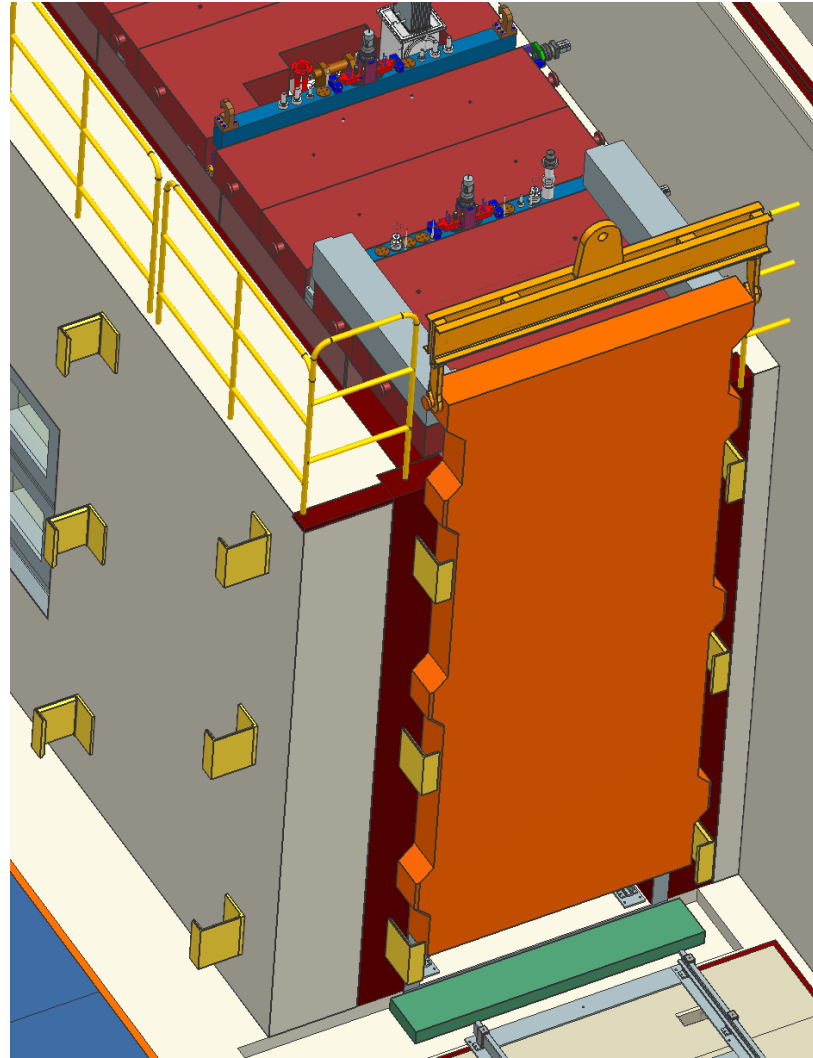


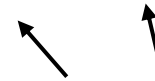
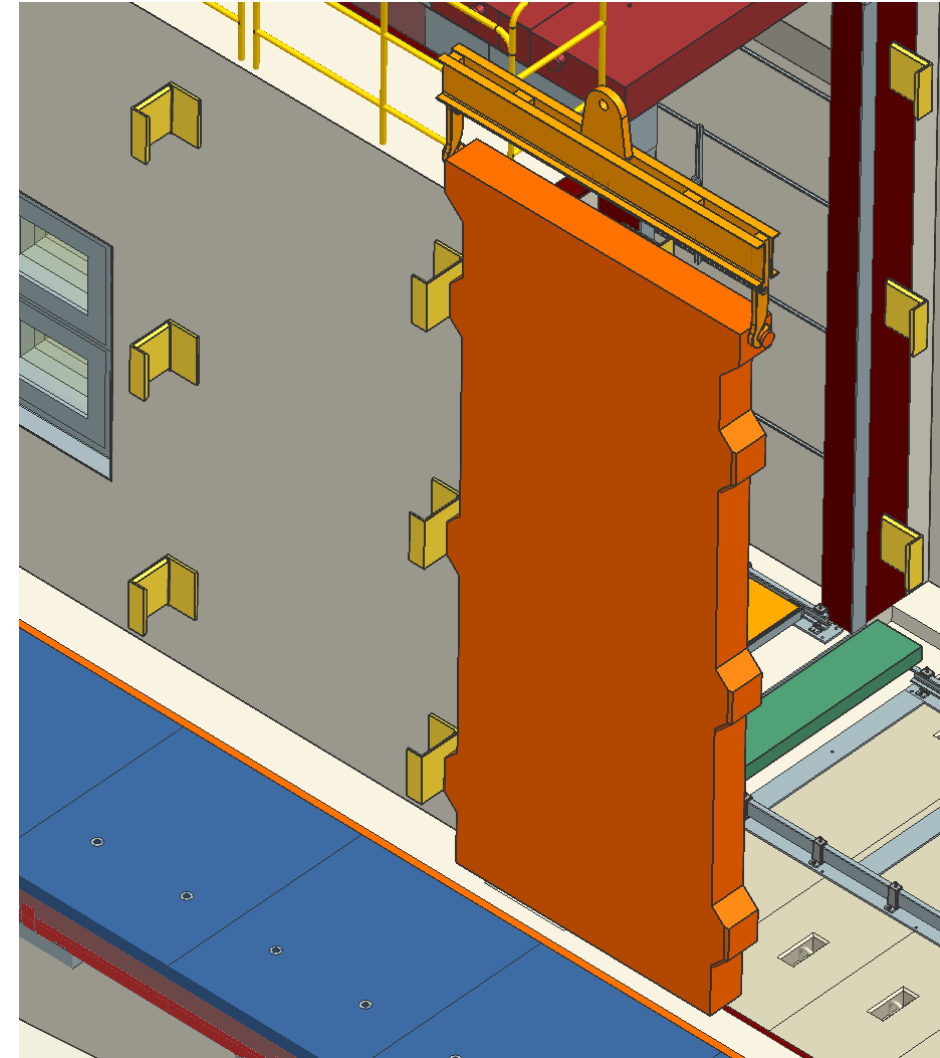
WC door
weight 105,423lb



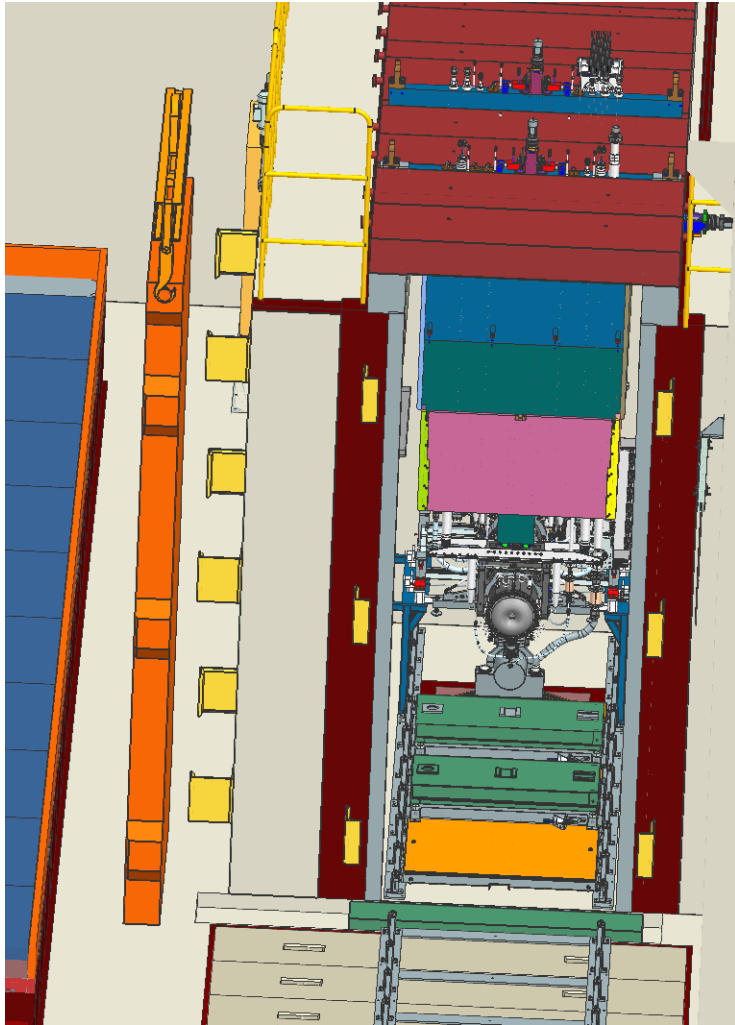
WC Door lifted by crane



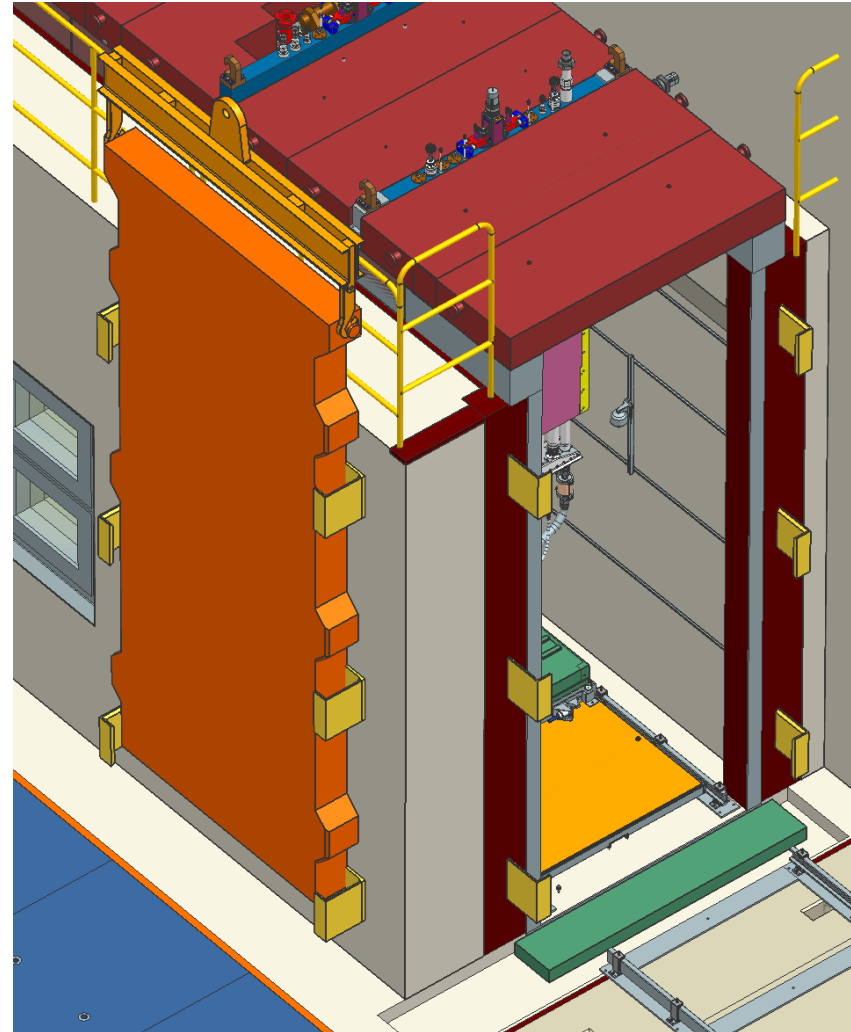
WC Door moved and rotated



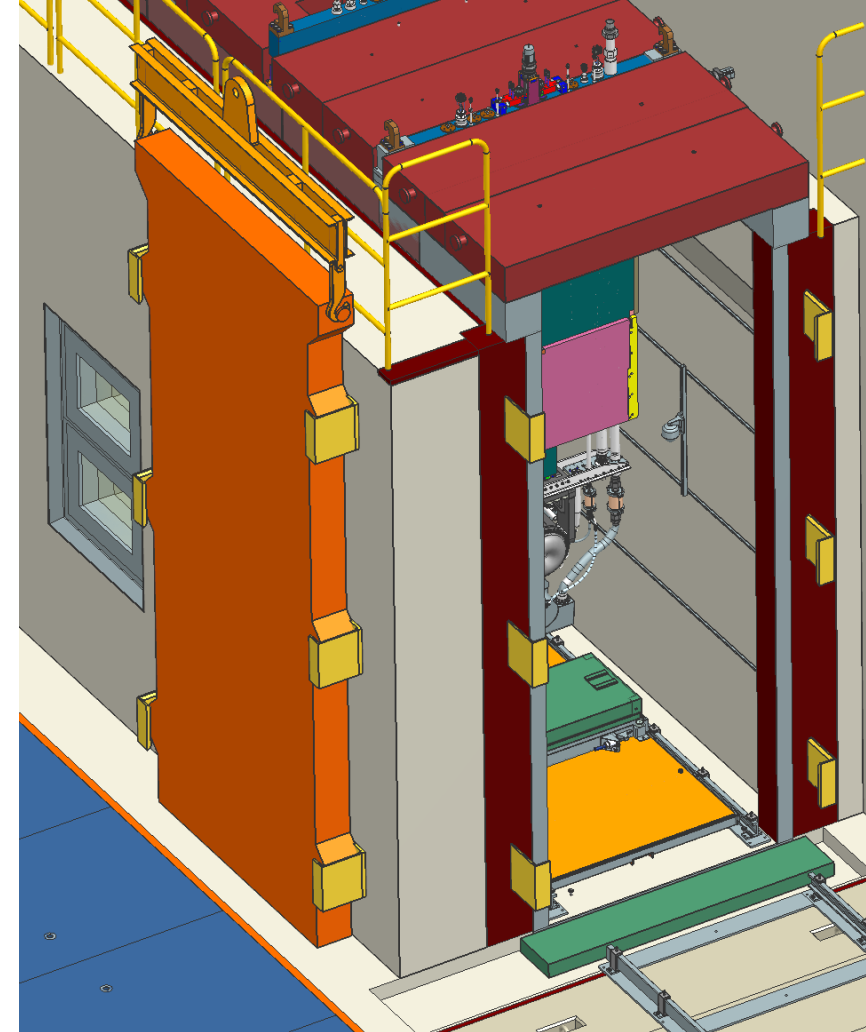
WC Door moved to holding brackets



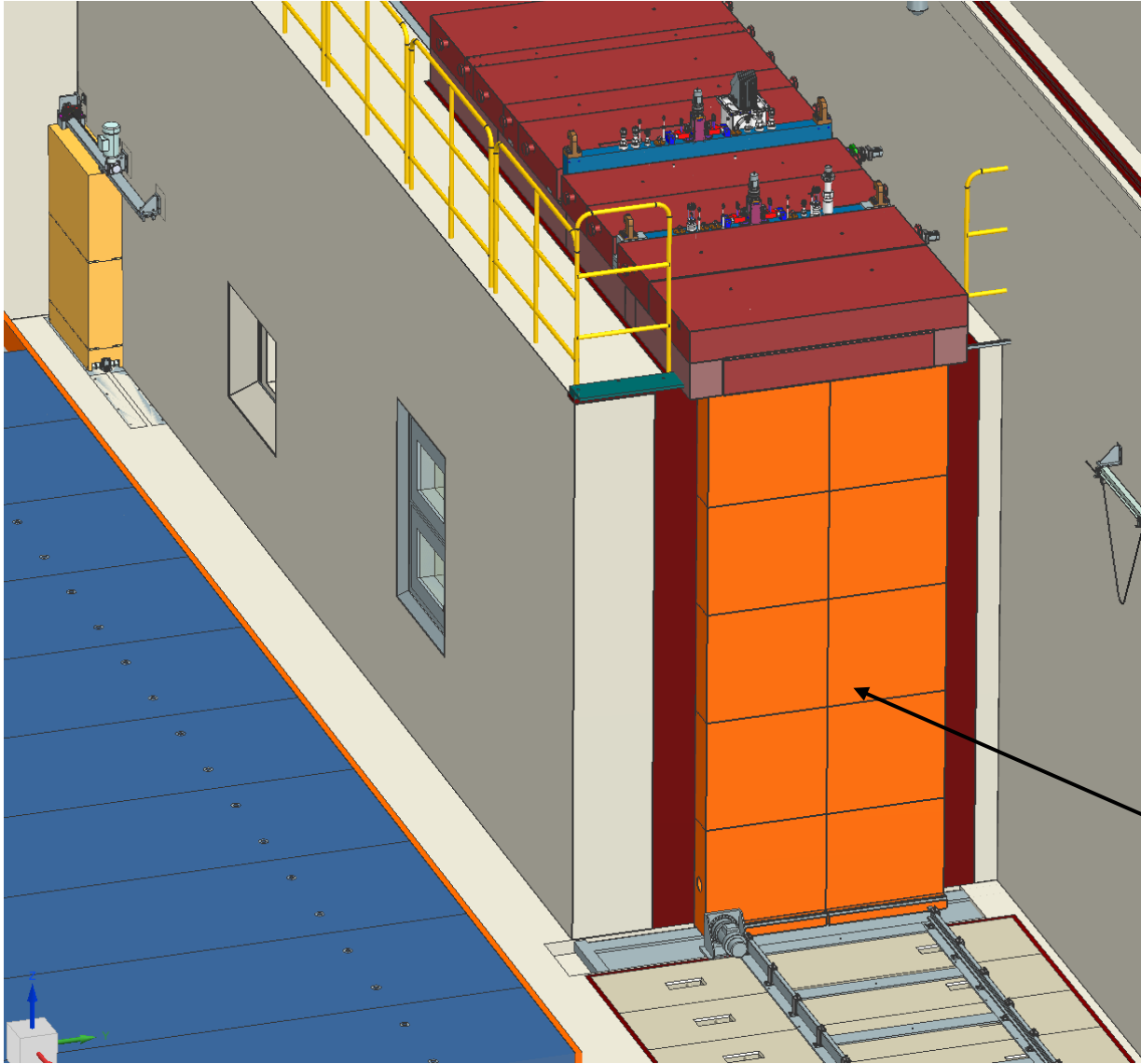
WC Door aligned with holding brackets



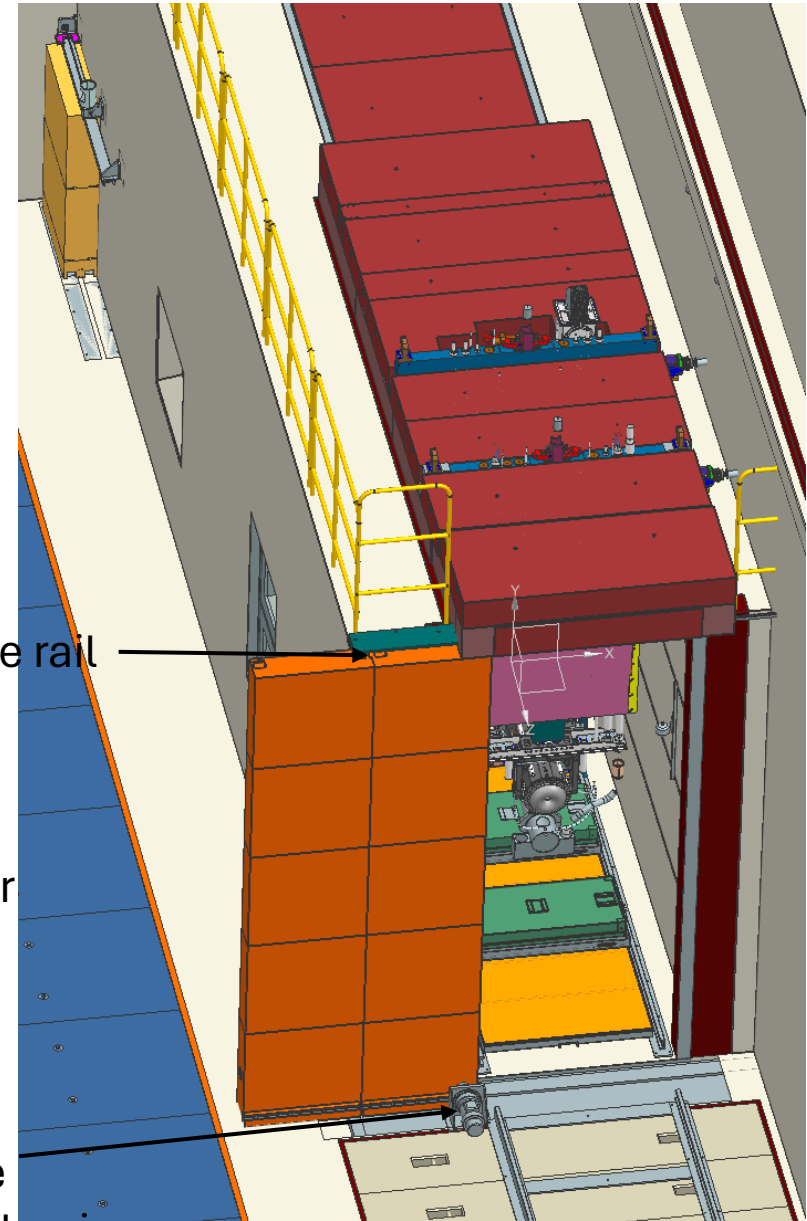
WC Door held by brackets



WC Door opened by drive mechanism



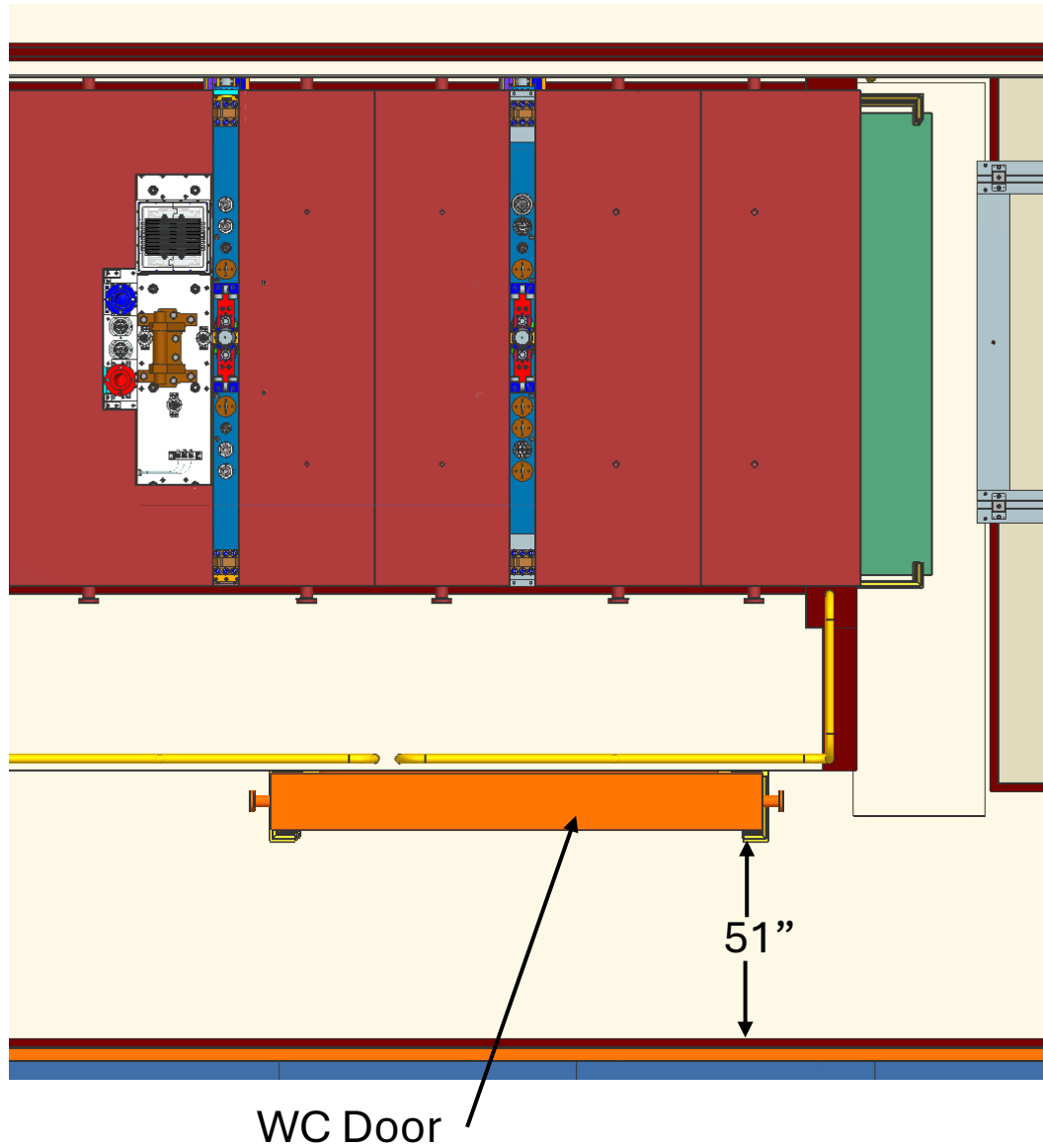
WC Door



Guide rail

Drive mechanism

WC Door beside of the Work cell



WC Sliding Door

