

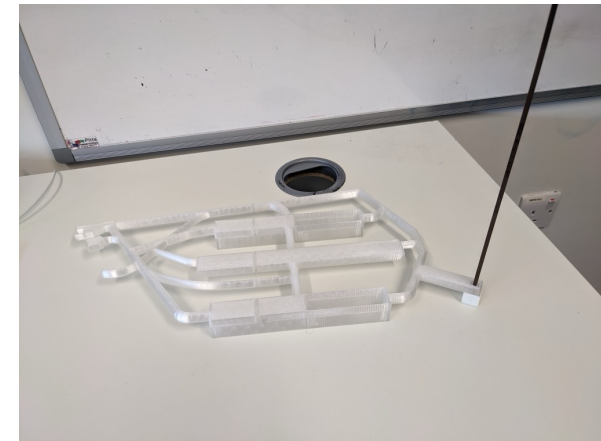
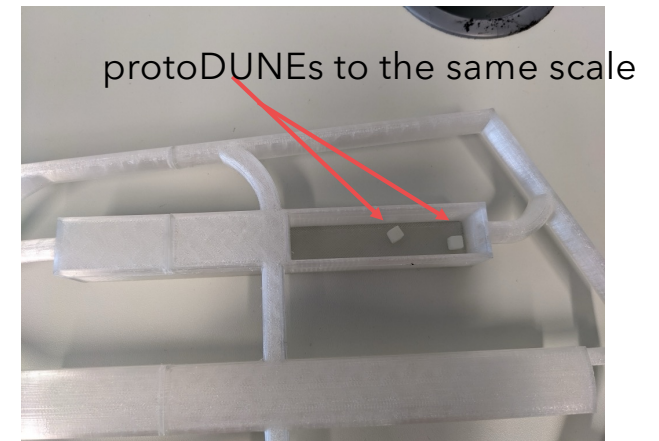
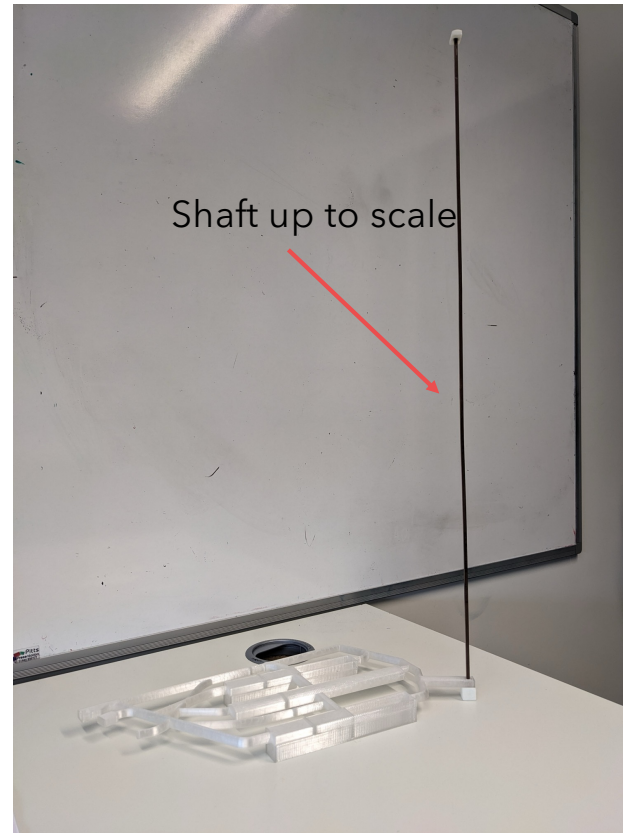
UPDATE ON THE 3D MODELES

PHELTON STEPHENSON, LINHUI GU,
ISOBEL MAWBY AND JAREK NOWAK

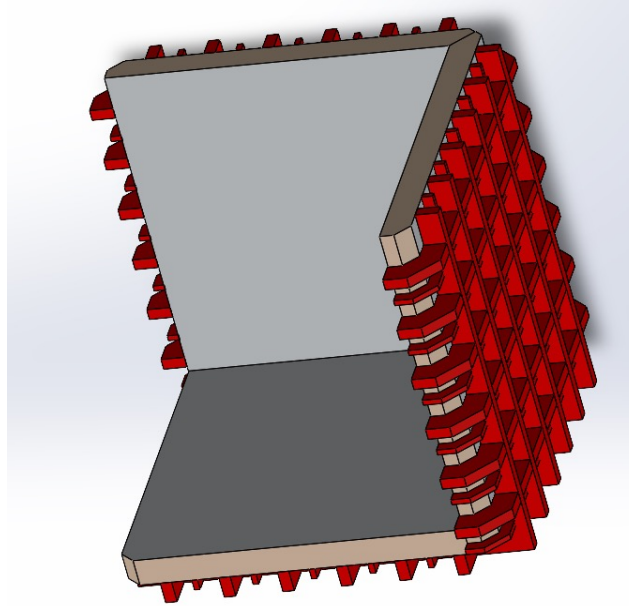


DUNE FAR DETECTOR FACILITIES

- Model 1:2000 - redesigned and manufactured by Phelton Stephenson from Lancaster Mechanical workshop.
- The material is translucent - we can add for example illumination representing the data flow.
- We can paint it and label the elements.
- I plan to get a big ben key ring when I am at the airport next time - 4.8 cm big ben would be to the same scale.
- We need a list of facts about the facility: size, depth, how long it takes to go down by the lift, ect.

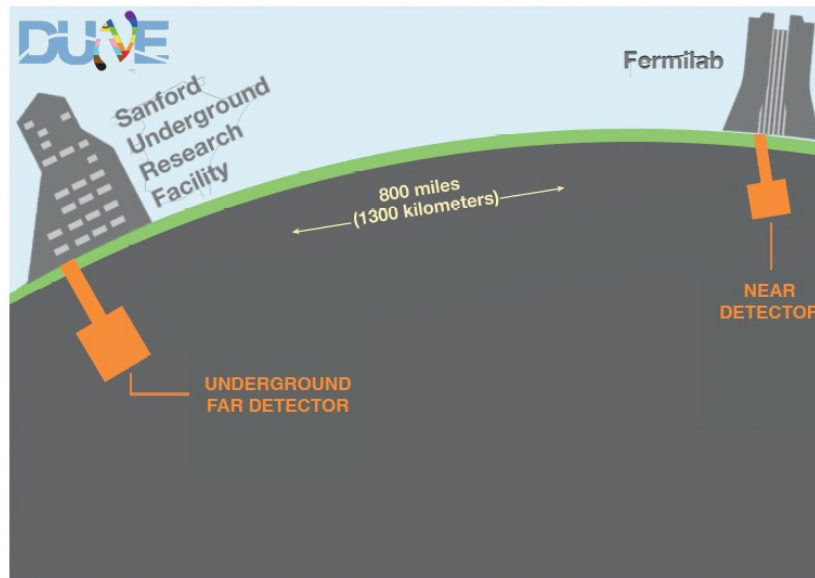


PROTODUNE MODELS



- Phelton created a design and is working on the manufacturing
- Big external plastic parts ordered from an external company
 - Steel mesh ordered and arrived
 - Will focus on the 30x30x30 cm³ first.

NEUTRINO OSCILLATIONS GAME



- A button to send neutrinos
- LEDs between Fermilab and SURF to show the neutrino oscillations
- A bar chart with three colors to show what neutrinos are detected at FD.

