



New VD PDS Schedule with Detector Order Swap

Peter Shanahan
PDS Consortium Meeting
30-Apr-2024



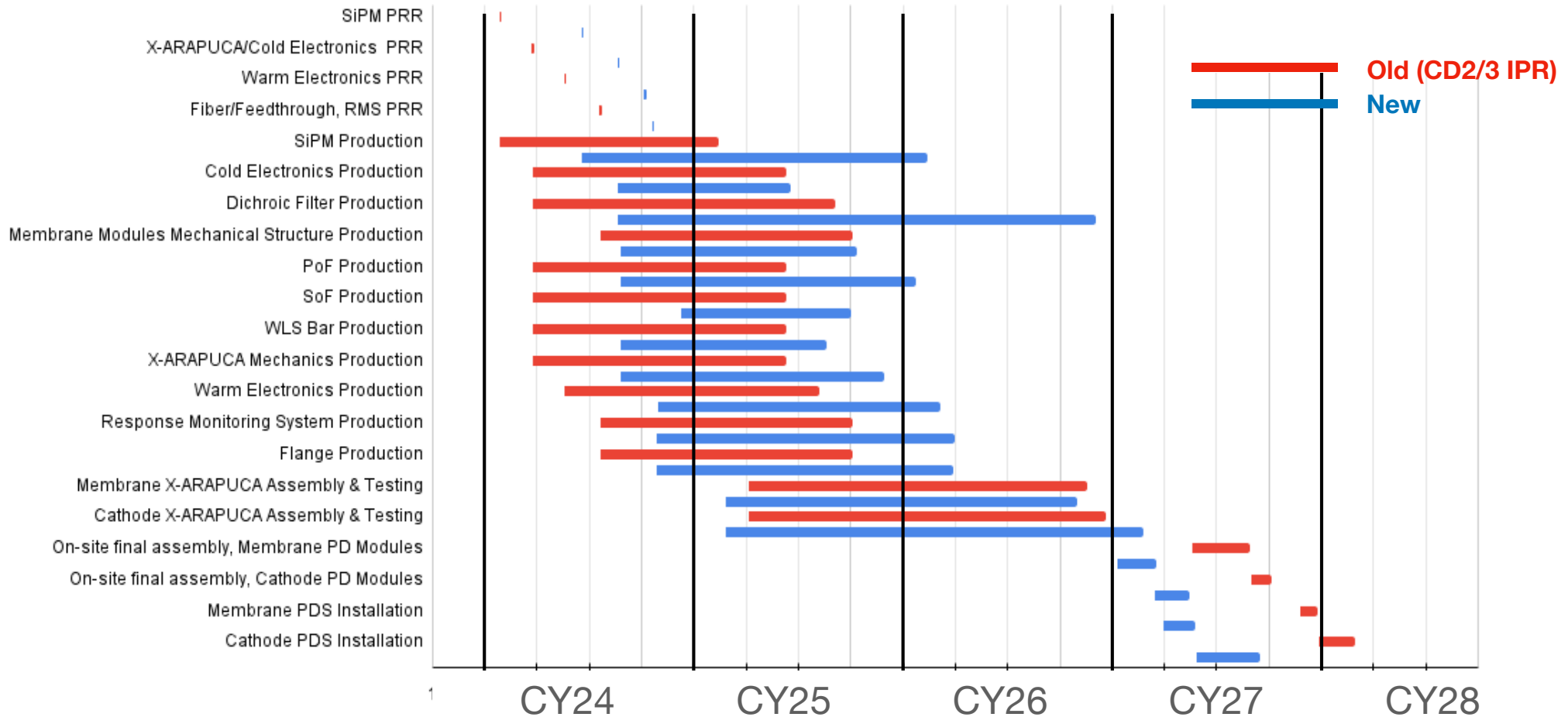
Introduction

- Rework of VD PDS Schedule
 - Has been in need of a rework for some time.
 - Incorporated experience from Module-0 installation.
 - Durations tend to be less aggressive than old schedule.
 - Rework coincides with discussions of swapping installation order of HD and VD detectors.
 - PD module installation now starts in early 2027.
 - Caveats with schedule as shown in this presentation
 - The following are based on my MS Project version
 - The official schedule lives in Primavera P6
 - The integration of the new schedule in P6 is largely complete, but final details from detector order swap are in progress.
 - The version I'm presenting is consistent on the scale of 0-3 months with P6.
 - PRRs have not actually been scheduled (in the active planning sense), and are subject to change (particularly Warm Electronics)
 - So far includes no feedback from groups.
- This presentation is to aid understanding. Please take the following with a healthy grain of salt.***

Comparison of old and new schedule

Caveat: I've tried to match (the somewhat arbitrary) choice of activities representing high-level summaries in CD2/3 Schedule Summary Graphic.

- Mapping isn't 1-to-1 between old and new schedule



Interpreting the Following Slides

- Main activity lines show nominal dates
 - Generally “as early as possible”
- Thinner lines (or milestone markers) indicate “late dates” for activity
 - The latest they can happen without delaying end of project.
 - These give an idea of the float of an individual summary line, and are not generally dates we can base a plan on.



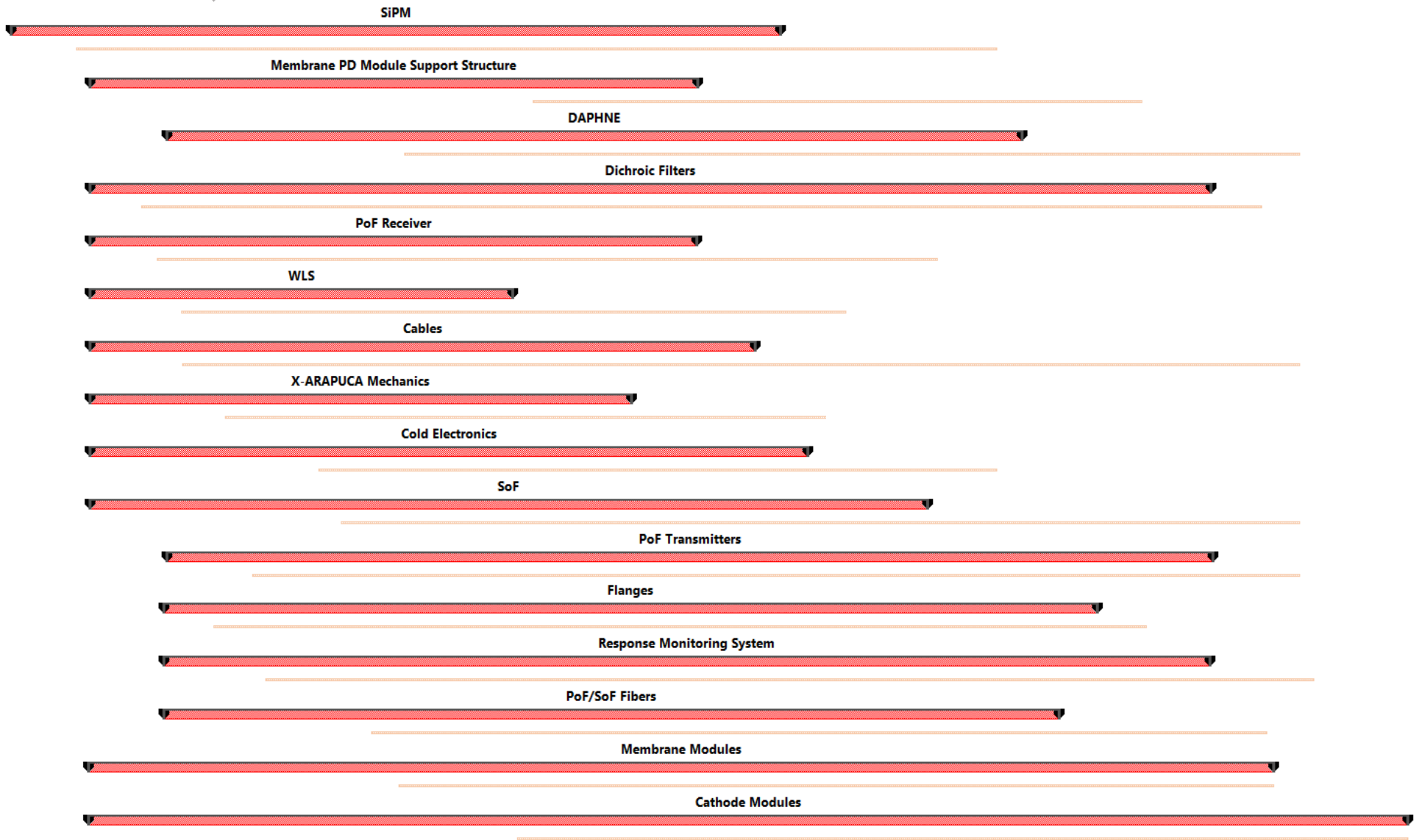
Overview

PRR SiPMs complete

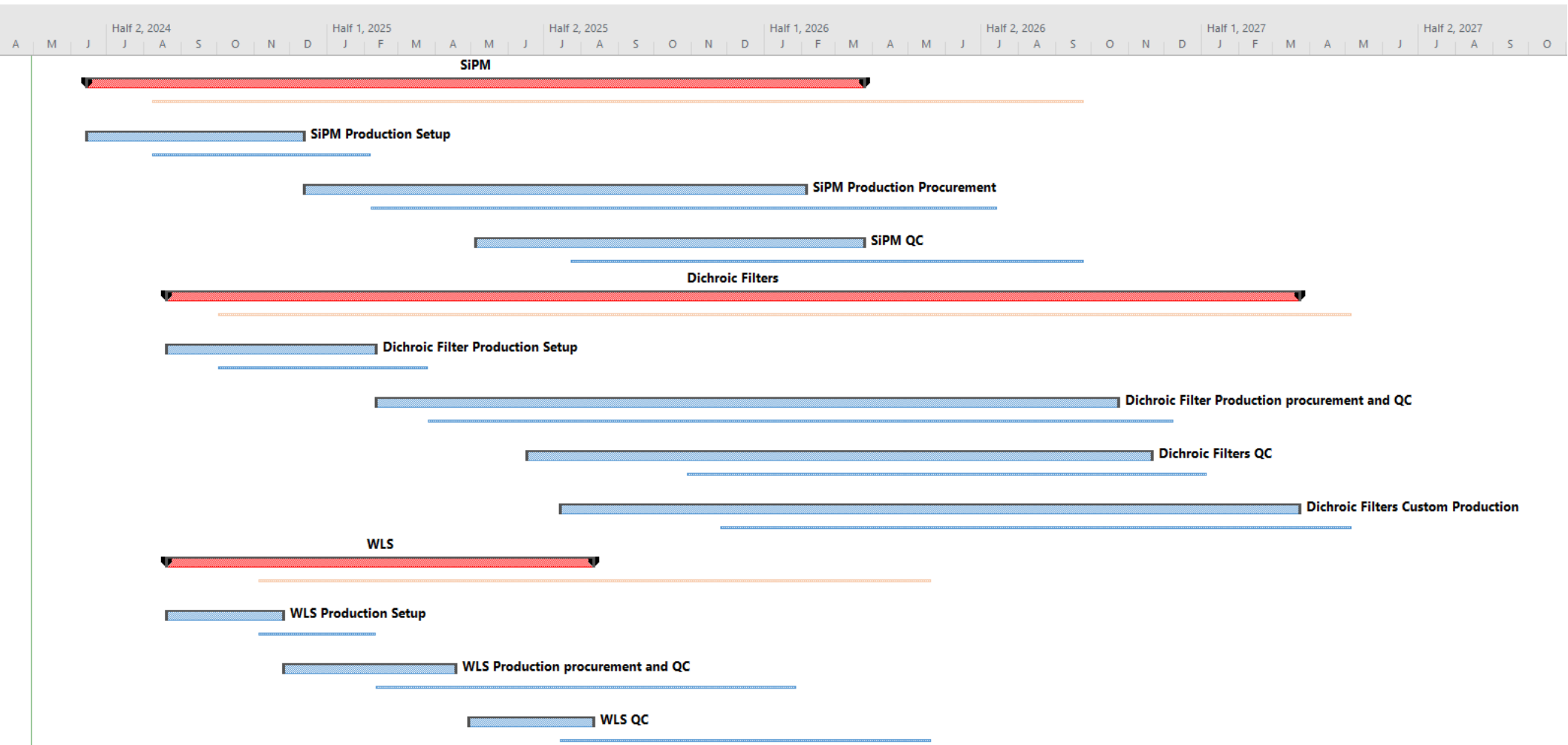
PRR Optical Modules, Cold Electronics Complete

PRR Warm Electronics Complete

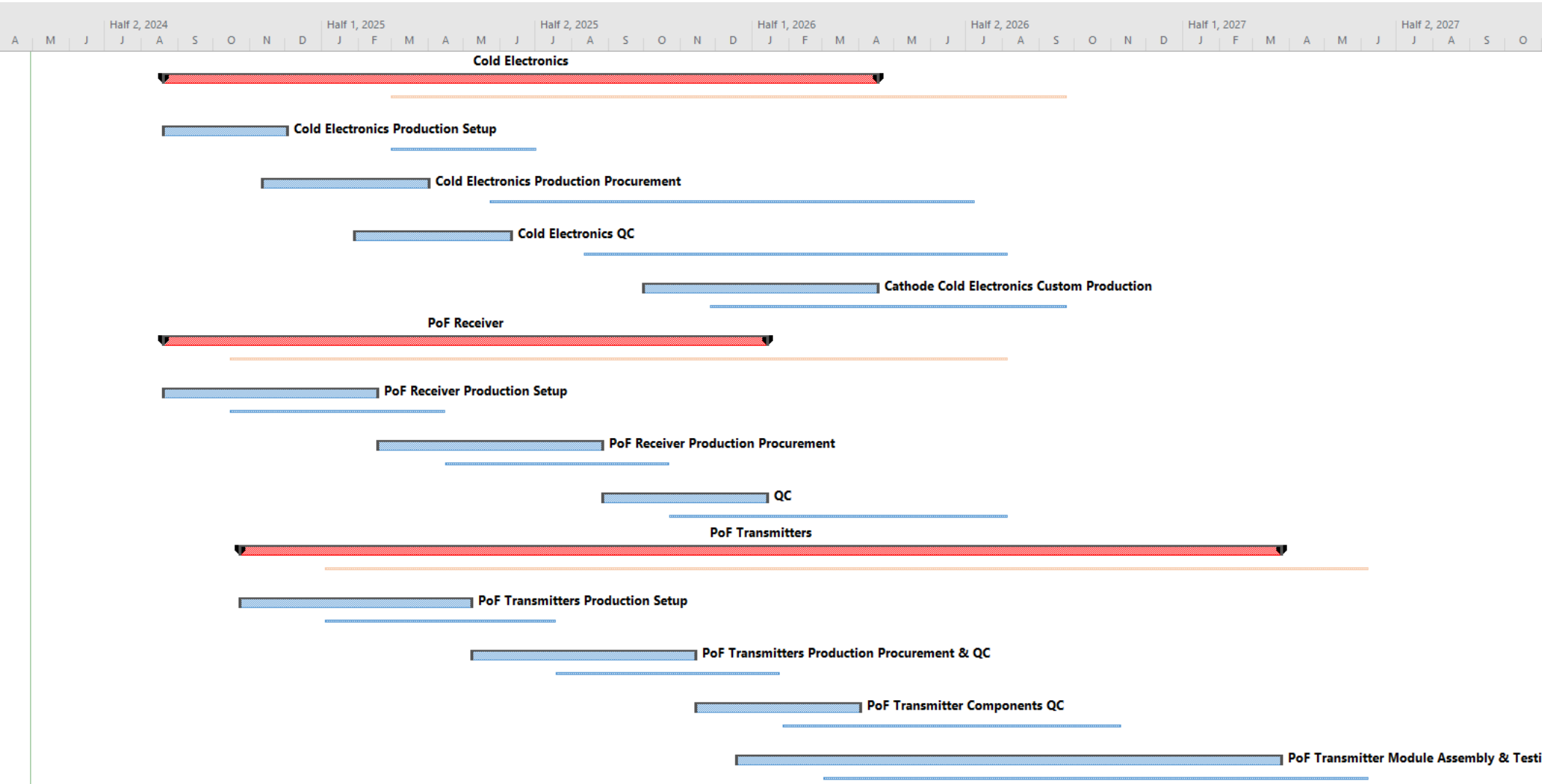
PRR Monitoring, Fibers, Cables, Flanges complete



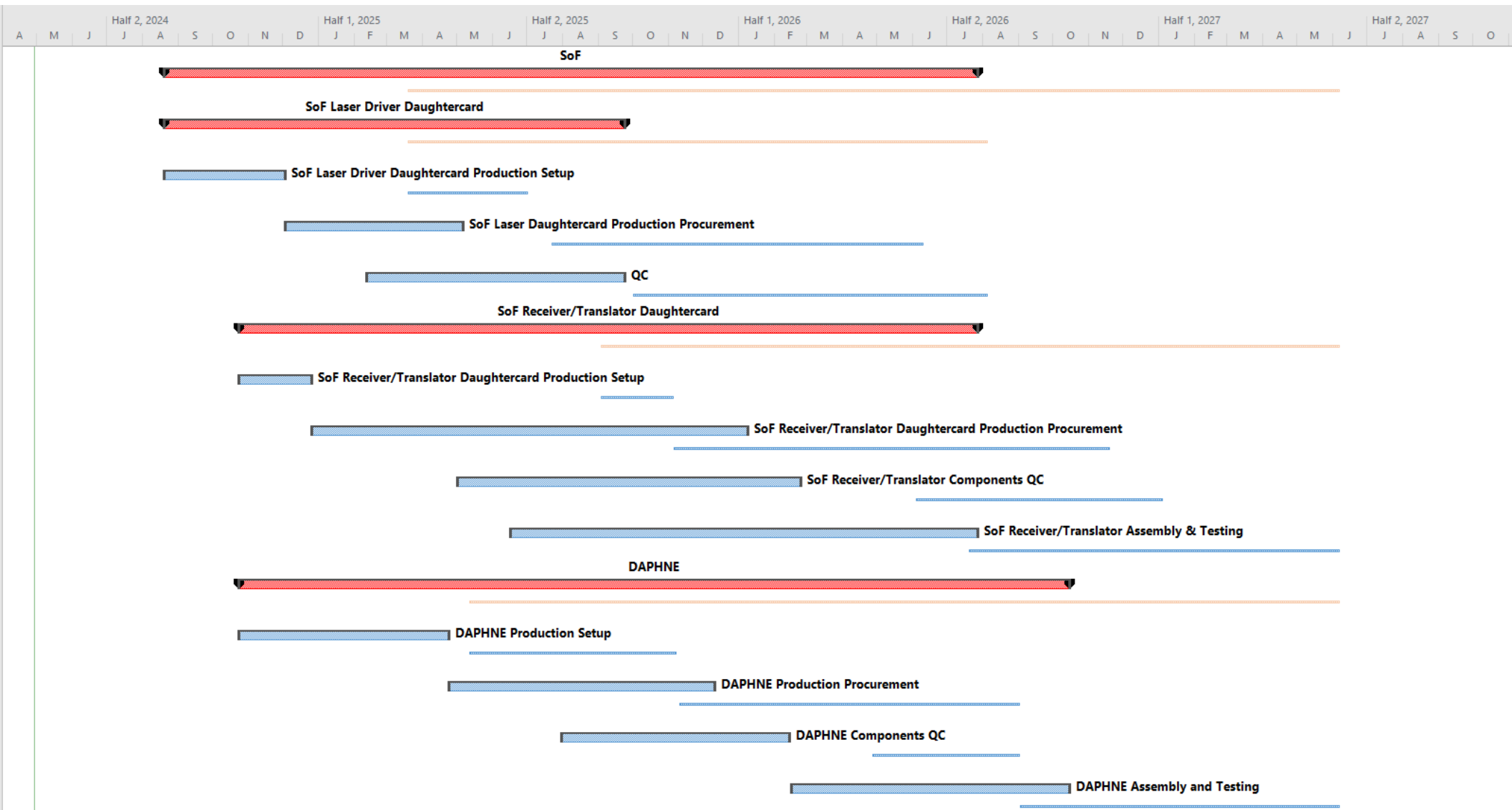
SiPMs, Dichroic Filters, WLS Plates



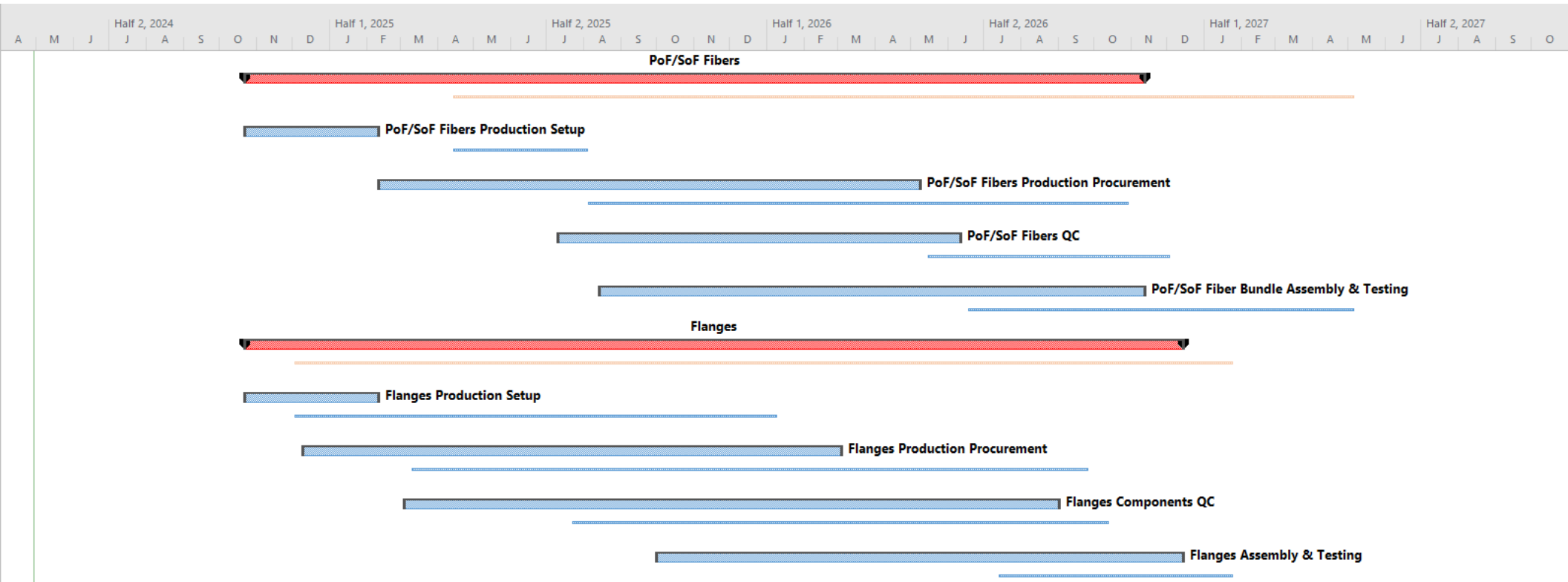
Cold Electronics, Power-over-Fiber



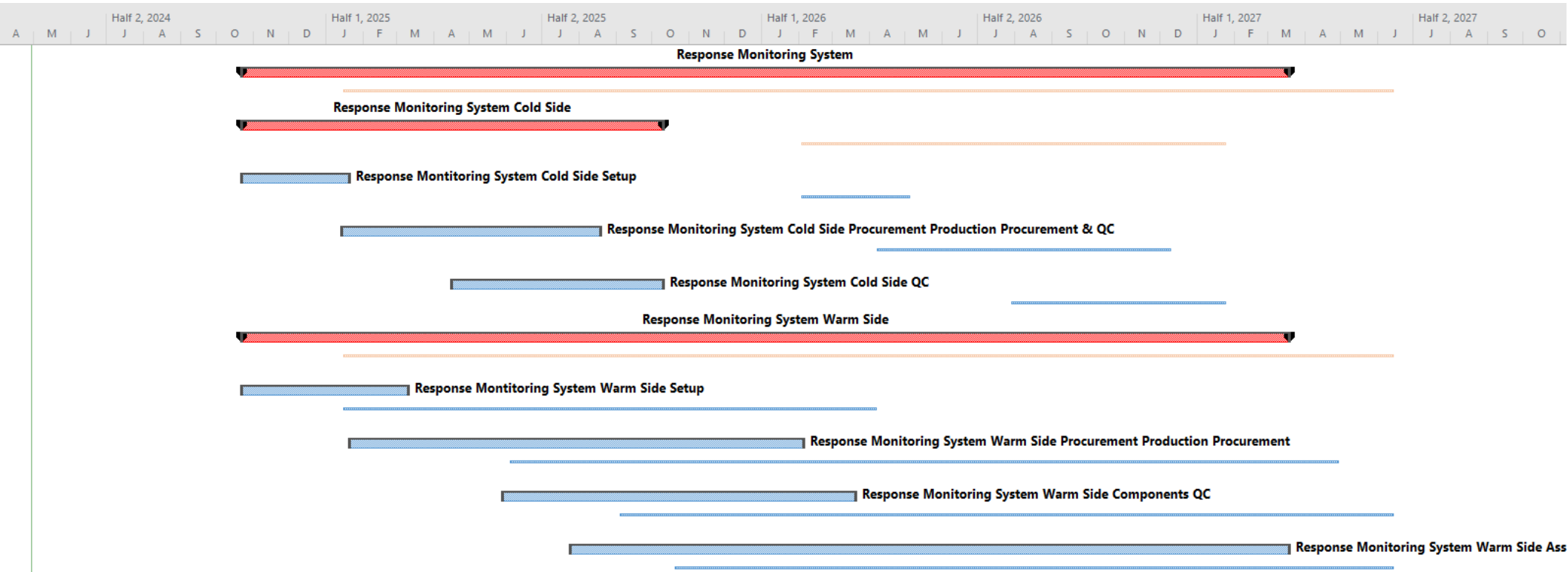
SoF and DAPHNE



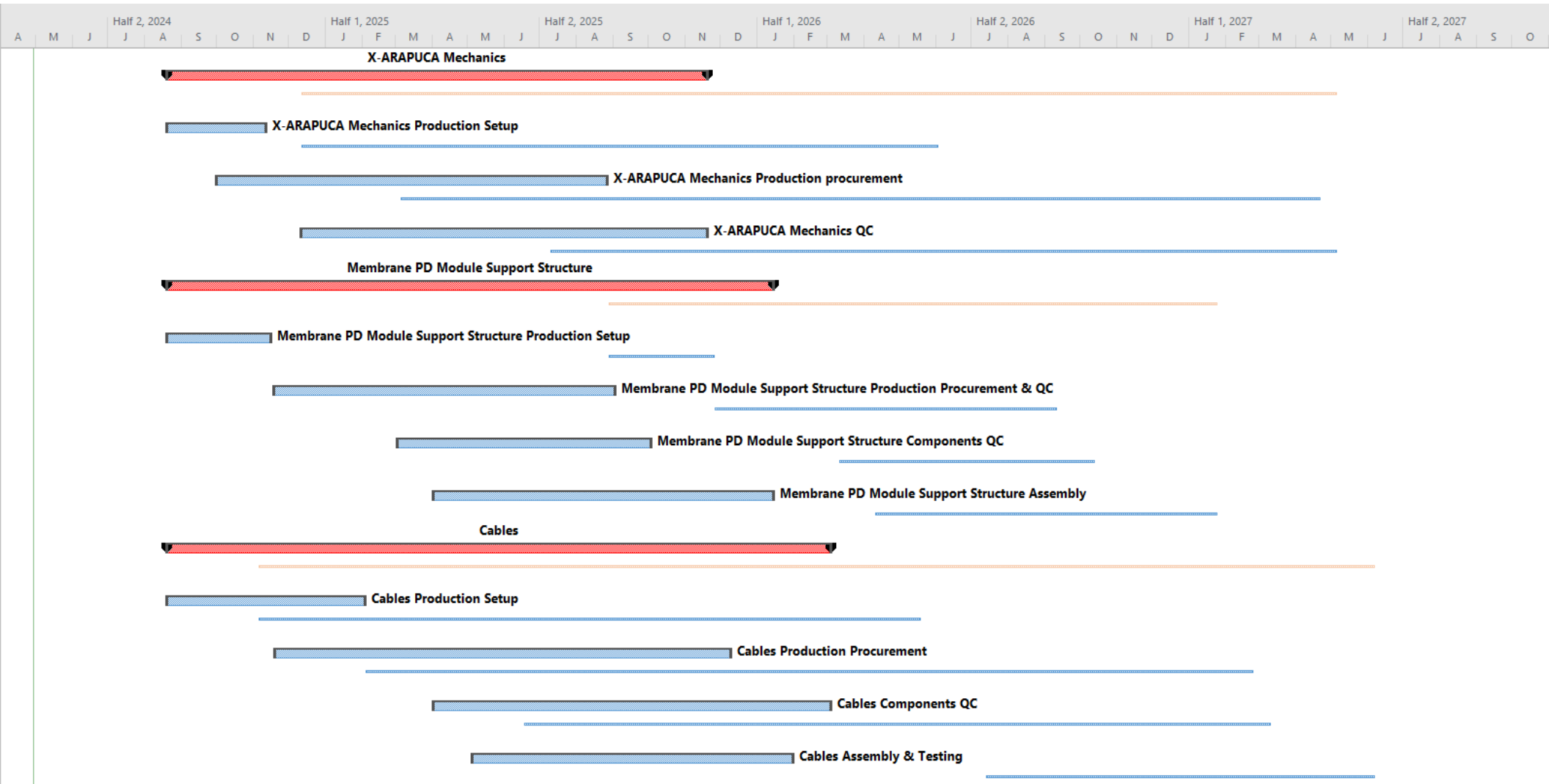
Fibers & Flanges



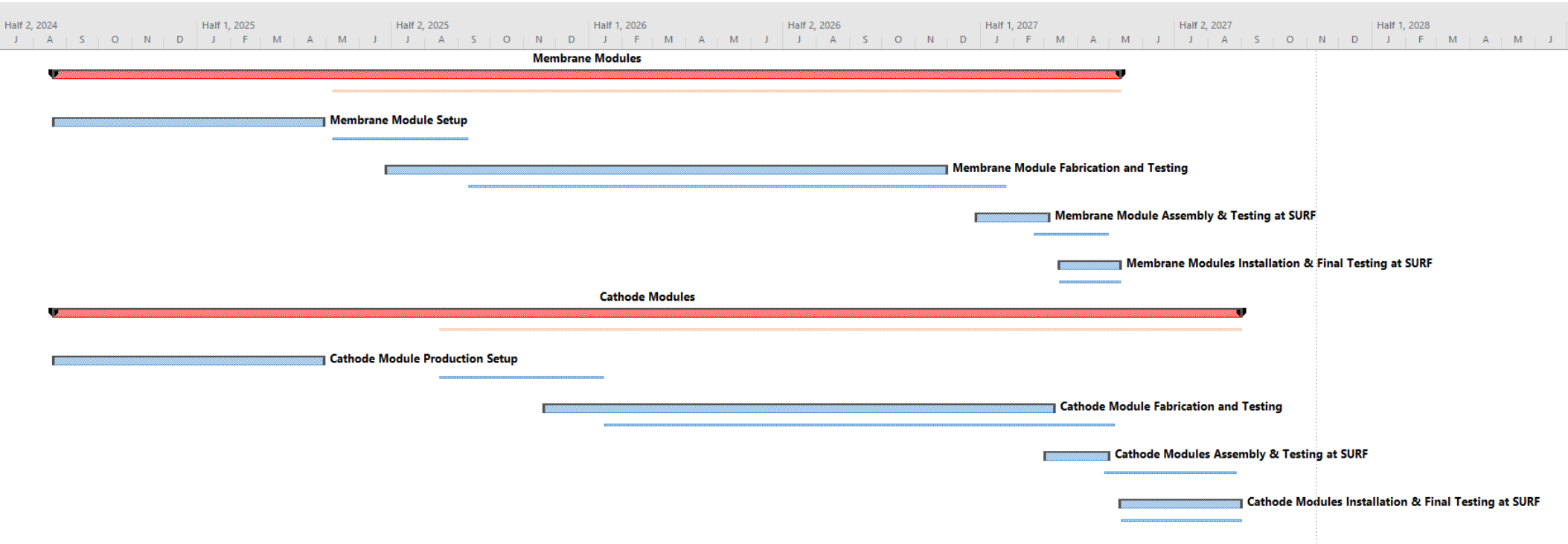
Response Monitoring System



X-ARAPUCA Mechanics, Cables, Membrane Supports



PD Modules



Example of Production Setup Detail - Cold Electronics

