



Storage Services Administration

CSAID Ops

May 14, 2024

Disk Storage Updates

- **Shared (Public)**

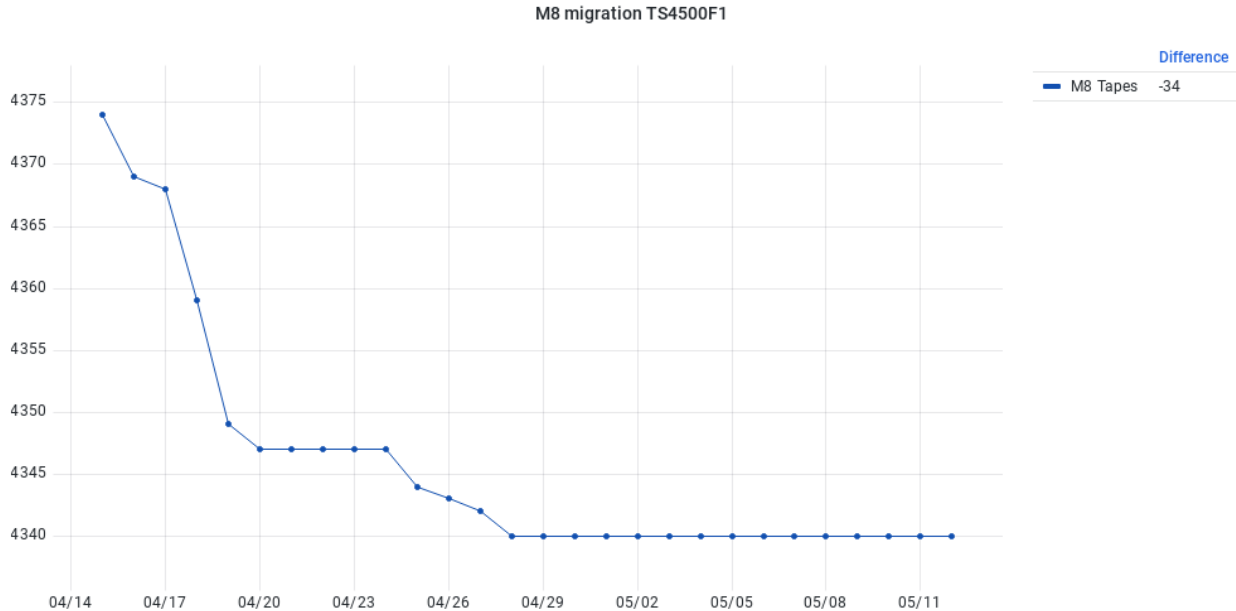
- 15 pool servers were requested to be updated to Alma9. (35/153)
- A new storage group is requested for COMPASS Accelerator Modeling (**RITM2094668**).
- Wednesday 15th downtime - 7:30AM. dCache portion will finish at 11:00AM. dCache including pnfs will not be available. (Patch shared dCache doors/Upgrade PostgreSQL to v15 for chimera/pnfs)

- **CMS**

- EOS v5.2.23 upgrade Wednesday 15th. Currently adding FST nodes, 4 of 12 have been added. These are new nodes running Alma 9.
- EOS Alma 9 upgrade – Migration to v5.2 is needed first but 12 new FST nodes are being added with Alma 9. (12/83 FST nodes, 3 MGM nodes).
- dCache Alma 9 upgrade – 34 pool nodes under upgrading process (101/229)

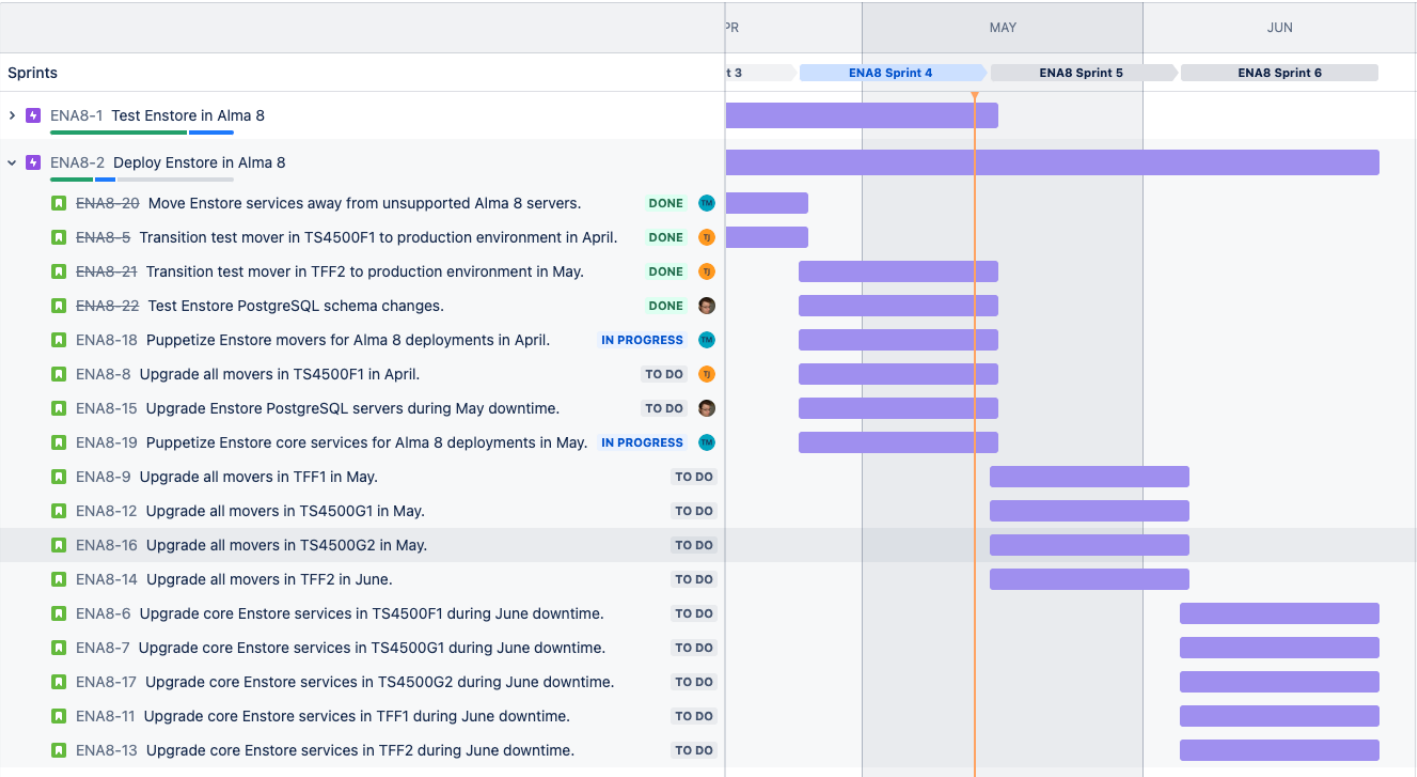
Tape Storage Updates

- No major issues
- Wednesday 15th downtime – Enstore PostgreSQL upgrade to v15 – Alma 8



[M8 migration](#) – 4340 tapes left (CMS waiting for LTO9 tapes for migration)

Tape Storage Updates – Enstore Alma 8



CTA – Test

- Dev System Down
 - Seems like a tape drive issue and not CTA issue checking on this
 - Moving towards a “Nova” test transferring in a pattern like what Nova would do
- Repacked a full tape with basic repack CTA commands (NFS used as a place to stage files)
 - Working on doing another by hand test with PNFS
 - Using scripts from CERN also need to be tested
- Outlining a timeline for Alama9 upgrades

- NAS2CEPHFS Migration Progress

- Almost done. Finishing some small details

Reminder for experiments

- CSAID has set data volumes to **read-only** on March 20, 2024
- NAS source volumes are **reaching EOL** this 31st May 2024

- A general announcement was sent beginning of April and the last one on the 1st May.
- Contacting each experiment to double-check the status

- CEPHFS

- All MDS's were reporting slow requests, which were caused by stuck processes on some clients. This also caused CephFS usage data to stop being sent to landscape