

Managing Background Modeling in LBNF Assemblies

Matthew A. Sawtell

14JUN24



U.S. DEPARTMENT OF
ENERGY

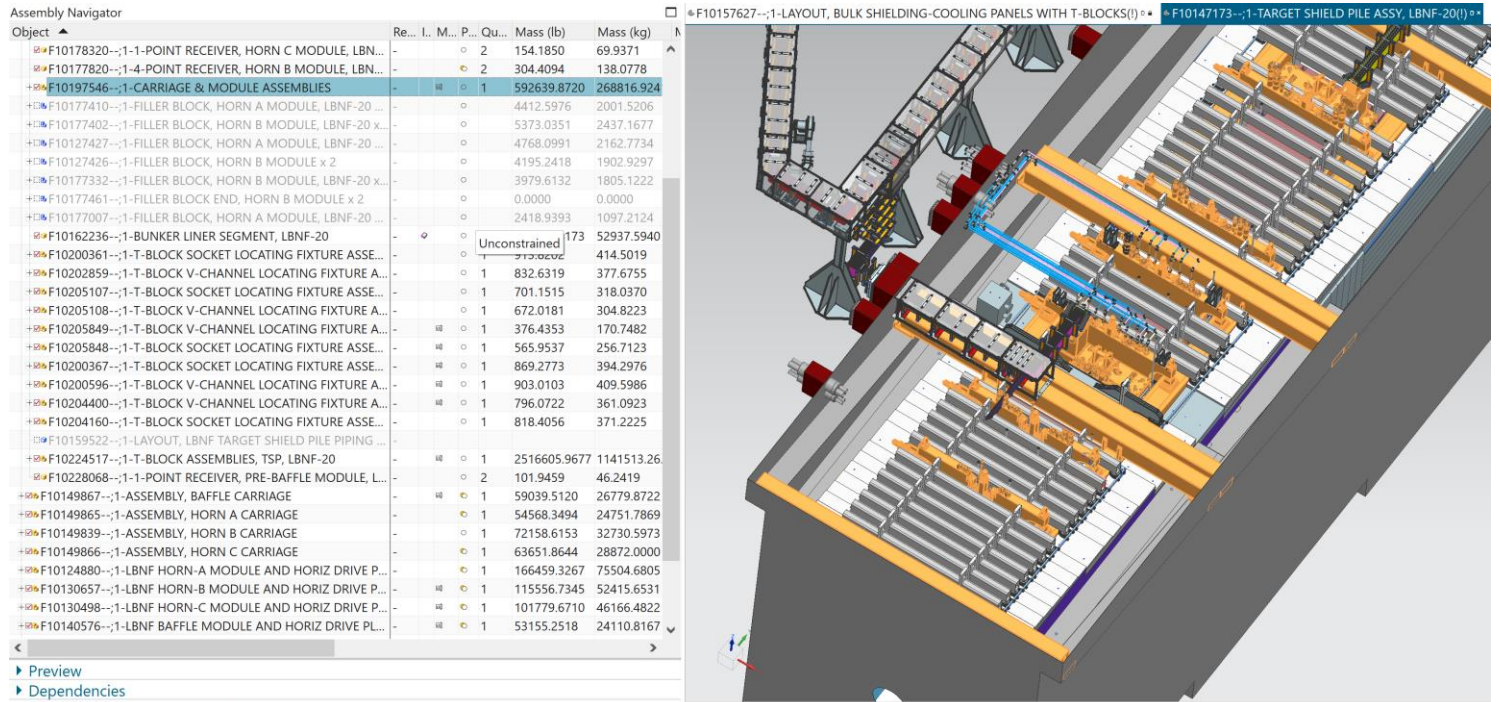
Office of
Science

Reason for this Review

- Over the last year or so, there has been multiple reports that the Integration Assemblies for LBNF-20, LBNF-30, and the Primary Beamline Enclosure (PBE) have been nigh impossible to load on current computers without issues
- Researching those issues had led to a slew of problems, the first to be addressed in this talk: How the same component or assembly can be used as “background” in multiple subassemblies for the same area

Example: Duplication of Module and Carriage Assemblies in the Target Bunker

- Modules and their Carriages are loaded twice in the same assembly for Target Bunker
- If Structure is to be replaced, then let me know to make edits to the upper assemblies



Example: Duplication of NSCF Modeling

- NSCF Modeling was set up to be used with uppermost integration assemblies
- Several Subassemblies have been shown to have the 'Model S' NSCF Structure as background
- Once modeling is complete for an assembly, please remove the 'background' model

F10190988--;1-PRIMARY BEAM WINDOW INSTALLED (Order: New Order 1)	-	1	920528
F10122483-B;1-LBNF PRIMARY BEAM WINDOW CARTRIDGE ASSEMBLY	B	1	0.2006
F10046610--;1-LBNF PRIMARY BEAMLINE WINDOW - BELLOWS WELDMENT	-	1	1.2966
FC0110633--;1-MODEL, 100 PERCENT - REV 2 LBNF-20 FINAL NSCF - MODEL S	-	1	920401
FC0101059--;1-AECOM EMBEDDED PIPE, 24" STD, A53 CARBON STEEL	-	1	1206.87
FC0116555--;1-GROUT, RADIATION BARRIER	-	1	4798.62
F10157627--;1-LAYOUT, BULK SHIELDING-COOLING PANELS WITH T-BLOCKS	-	1	200472.
F10199382--;1-AECOM UPSTREAM WALL PLATE	-	1	238.591
FC0024261--;1-O-RING, -394, BUNA, N	-	1	0.0989
F10195039--;1-DOWNSTREAM PBE ASSEMBLY	-	1	533.180
FC0105464--;1-PROTOTYPE TEST TABLE, PRIMARY BEAM WINDOW	-	1	9081.31
F10162236--;1-BUNKER LINER SEGMENT, LBNF-20	-	1	116707.
F10200366--;1-open part	-	1	39.5842

