



Super-module thermal analysis

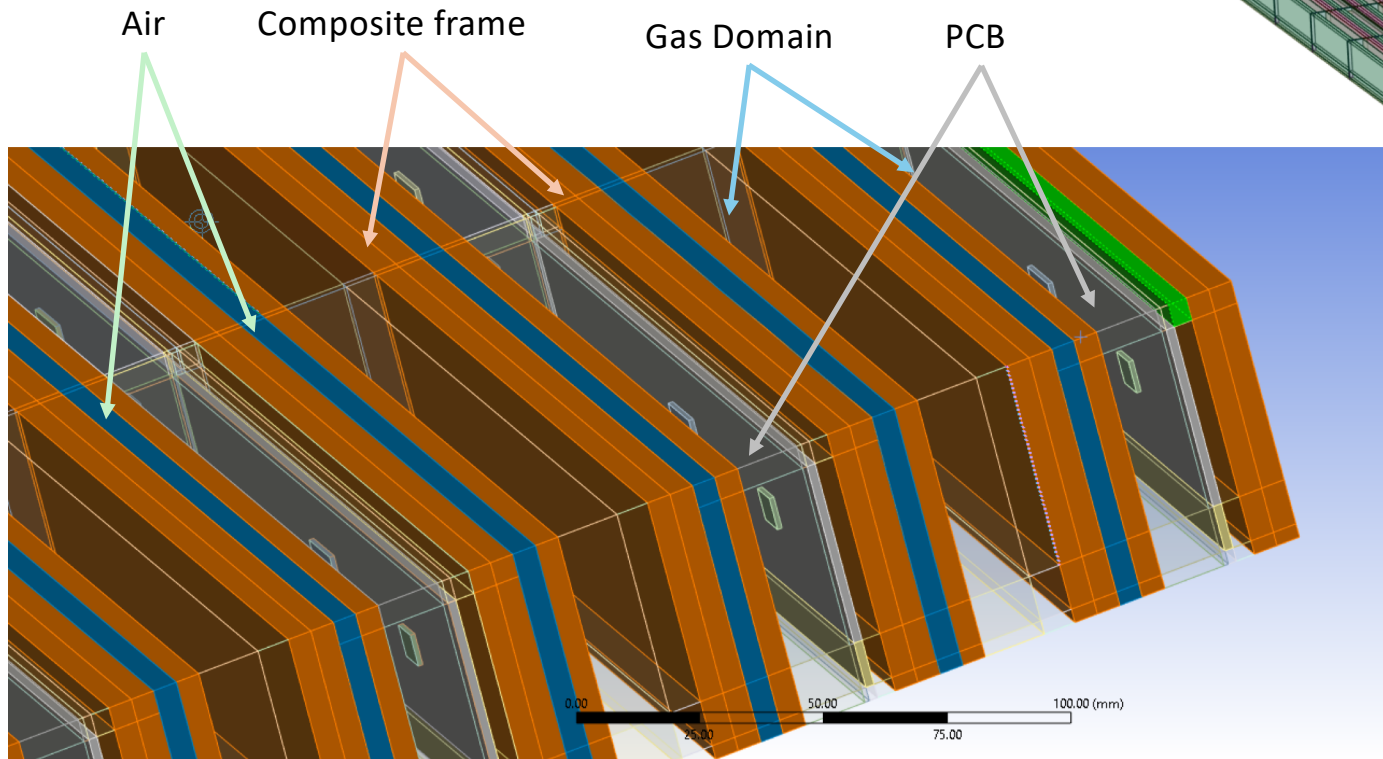
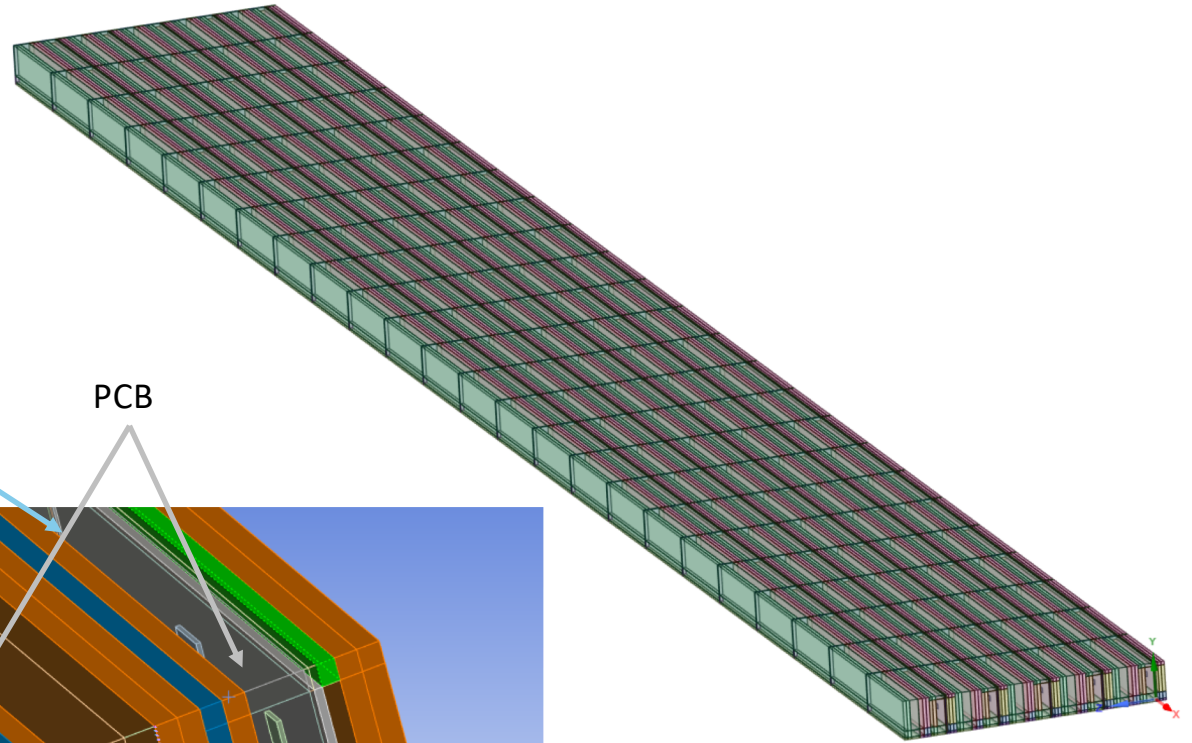
Otari Kemularia

Georgian Technical University, Tbilissi, Georgia

7 Aug 2024

R. Petti, O. Kemularia

10 module stack

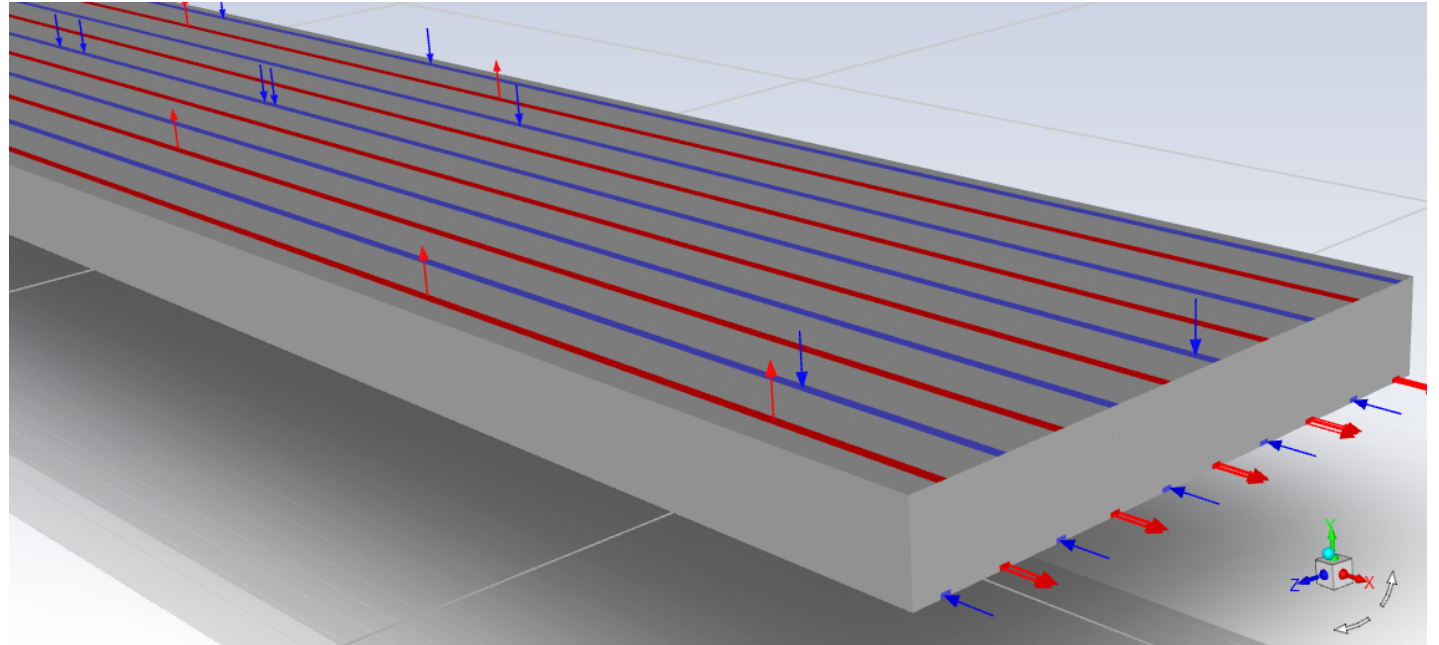


Boundary conditions

Inlet – 5NLPM

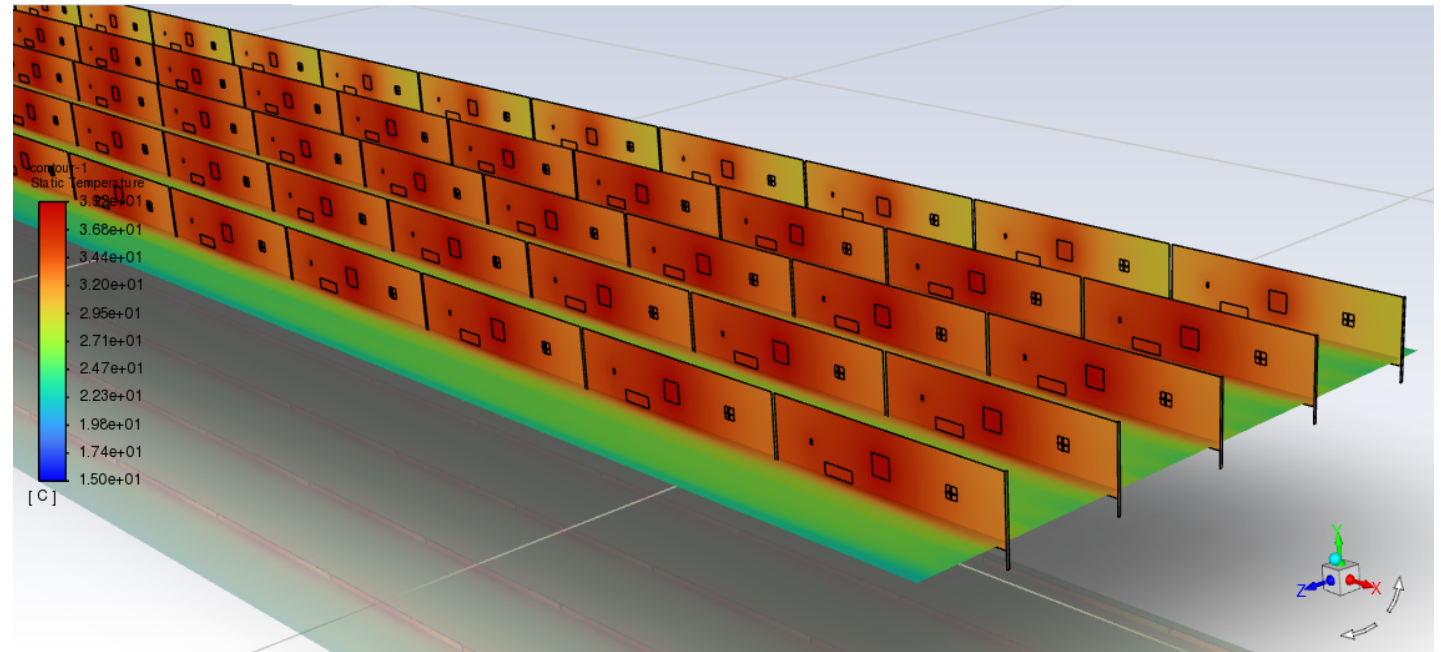
Gas – Xe/Co2 mixture

Ambient temperature – 20c



Max temp. with 5NLPM and 20c ambient temperature

Asic max temp. – 39c
Mcu max temp. – 34c



| C | ASIC | MCU |
|----|----------|----------|
| 15 | 35.15136 | 30.29885 |
| 20 | 38.98831 | 34.1545 |
| 25 | 43.19949 | 38.29745 |

| NLPM | ASIC | MCU |
|------|-------|-------|
| 5 | 38.99 | 34.15 |
| 10 | 35.30 | 30.60 |
| 15 | | |

