



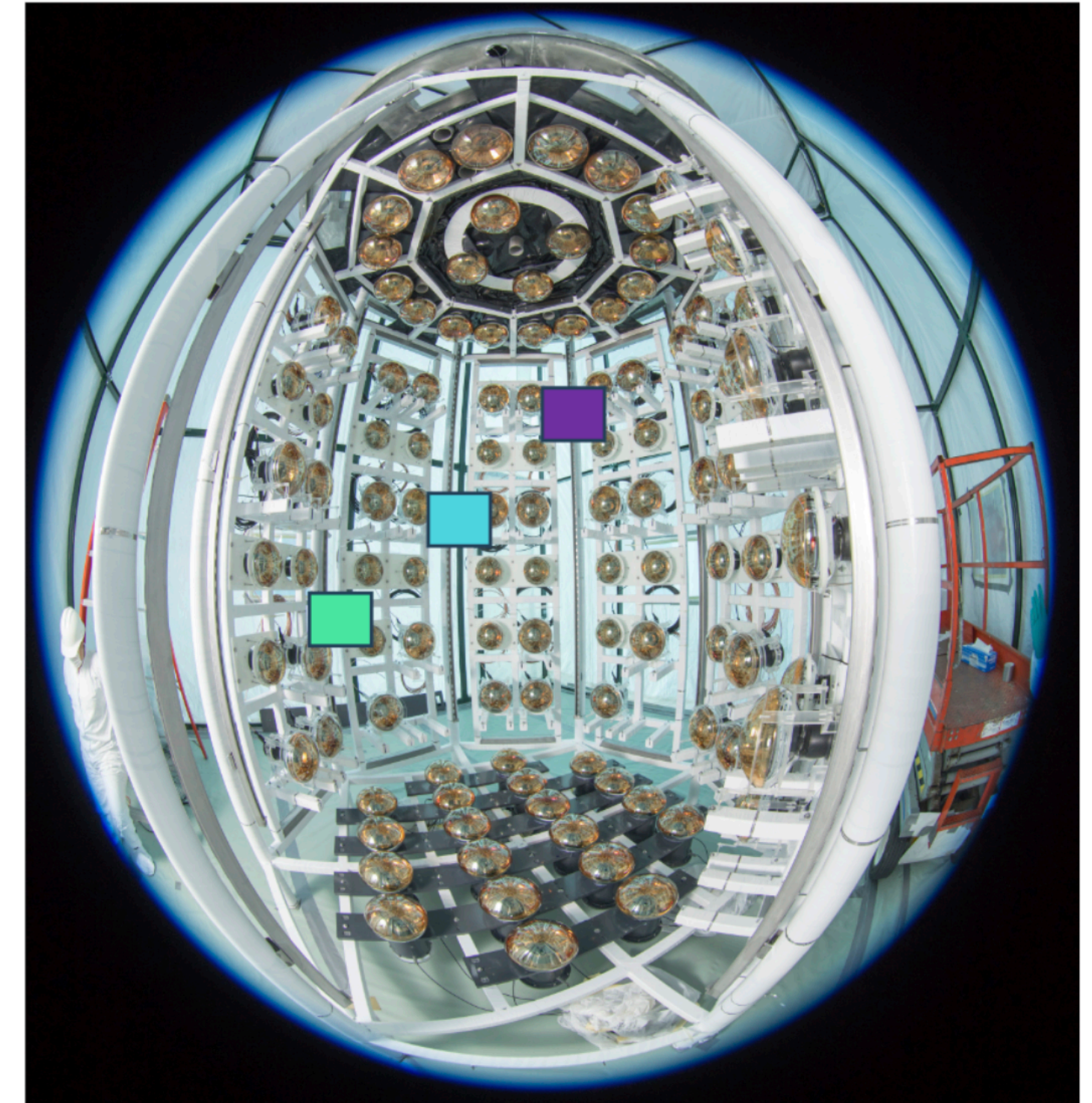
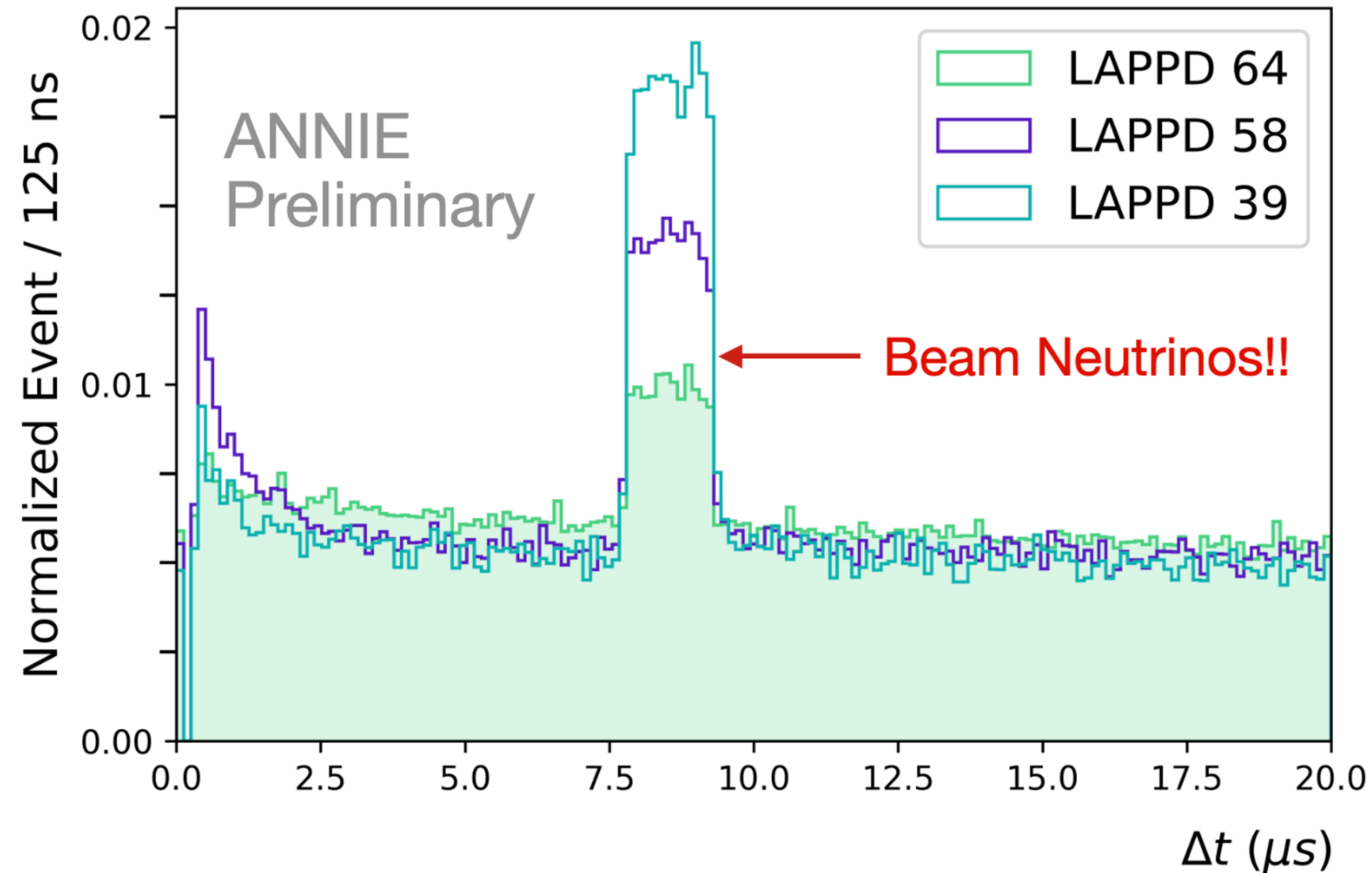
ANNIE: Accelerator Neutrino Neutron Interaction Experiment

Carrie McGivern and Marvin Ascencio
on behalf of the ANNIE collaboration

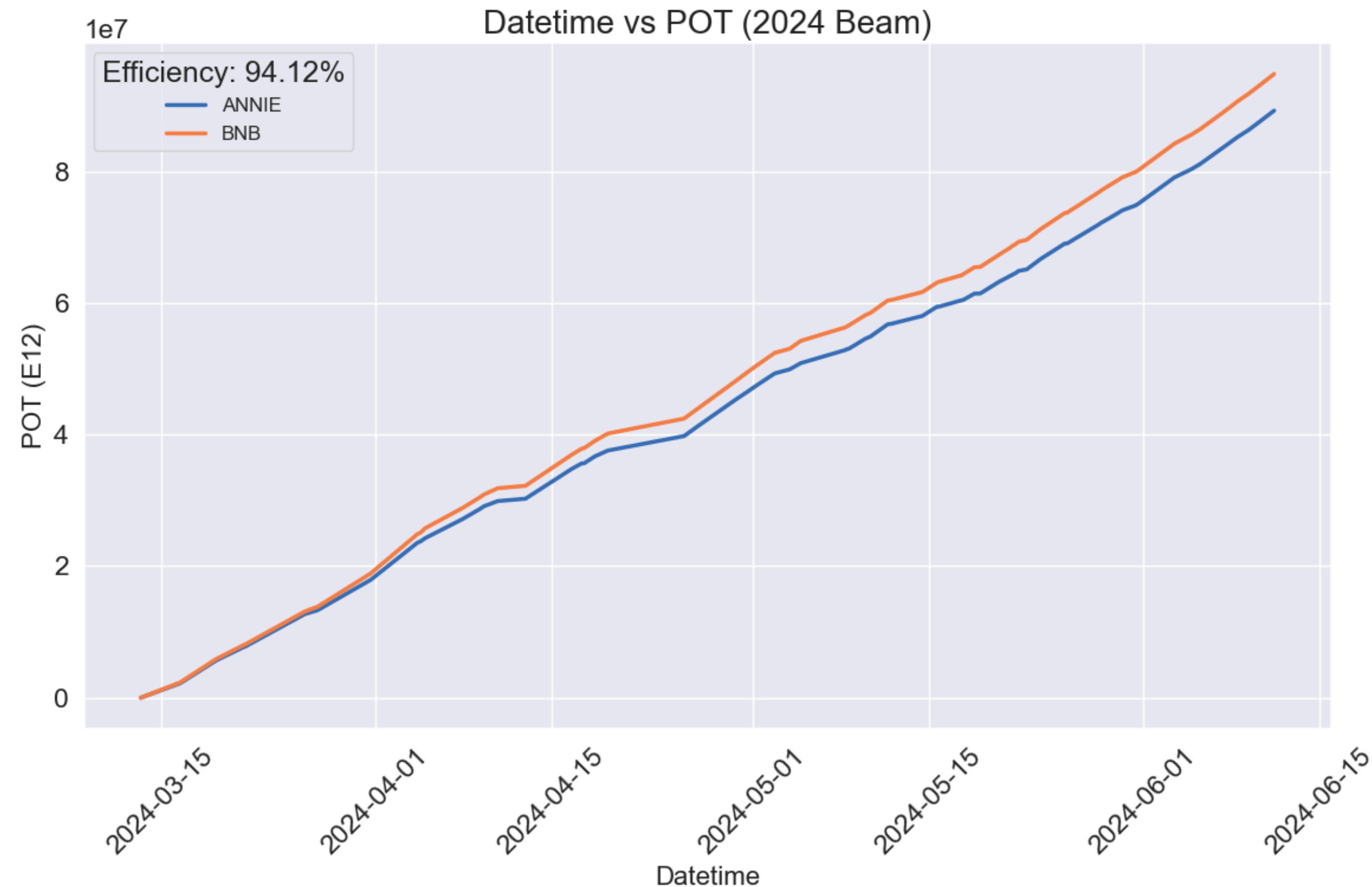
**IOWA STATE
UNIVERSITY**

PMG experiments meeting, Aug 1, 2024

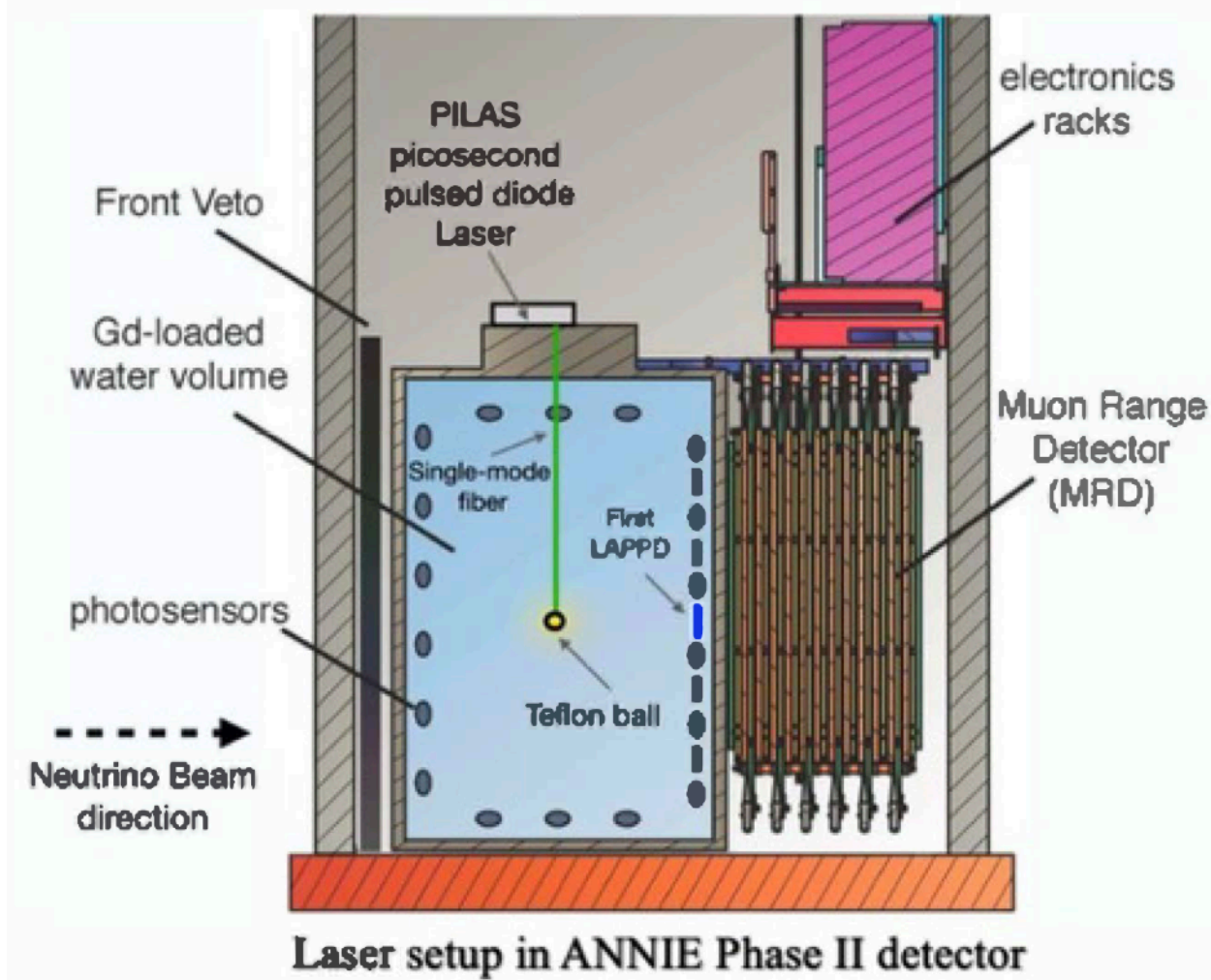




- ▶ We have three LAPPDs in the ANNIE tank, all of which took beam neutrino data in this last period.
- ▶ The characterization of the 4th LAPPD is ongoing in Lab 6.

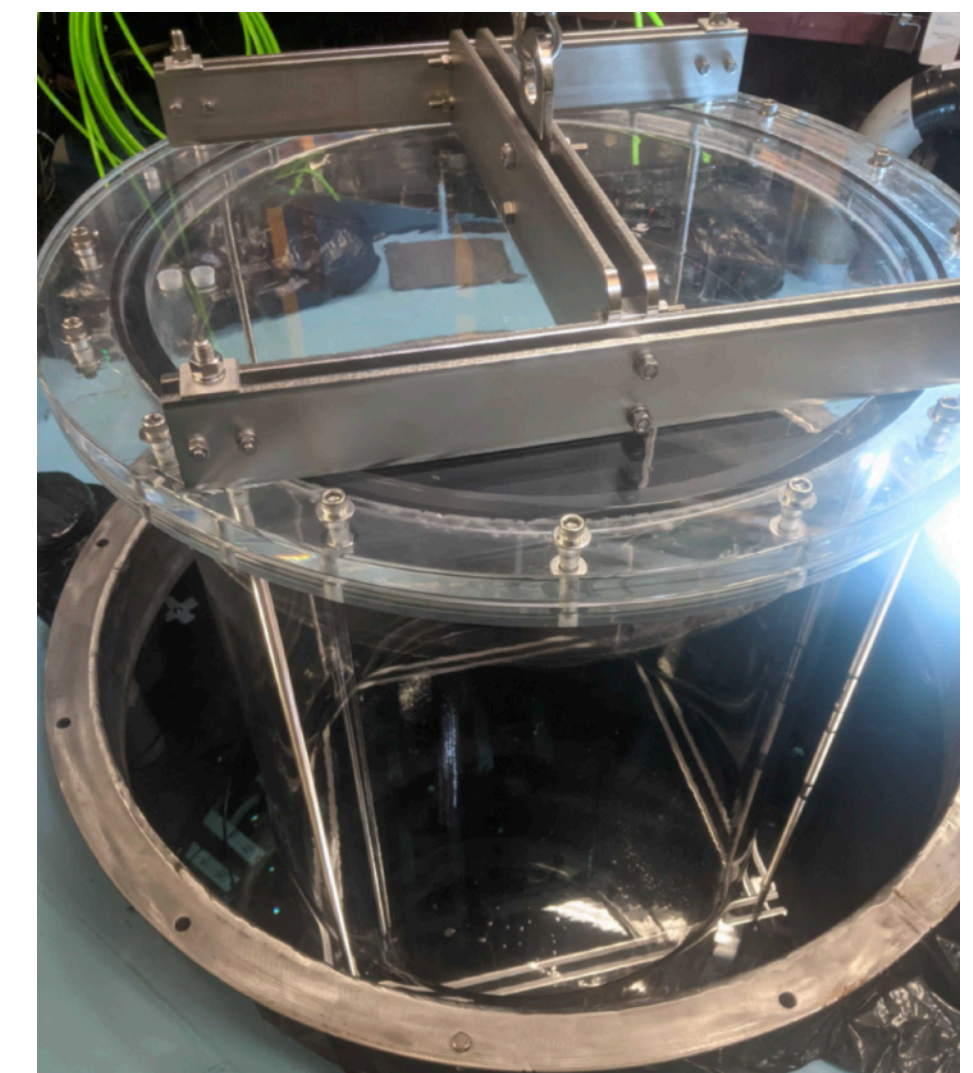


- ▶ We collected data with good efficiency.
- ▶ DAQ stable (< 5 crashes over the beam period).
- ▶ We utilized the OS upgrade opportunity to substitute the monitoring machine.



MRD

- ▶ Laser calibration run and multimode fiber laser setup.
- ▶ LAPPD #4 characterization and deployment.
- ▶ MRD refurbishment.
- ▶ Re-deployment of the WbLS vessel in the ANNIE tank.



SANDI Vessel

- ▶ ANNIE was able to deploy and successfully integrate into the detector DAQ system and detect neutrinos with multiple LAPPDs.
- ▶ The ANNIE data collection ended with high efficiency in the ended beam period.
- ▶ The summer schedule is booked with the calibration campaign, detector maintenance, and preparations for the re-deployment of the Water-based Liquid Scintillator.