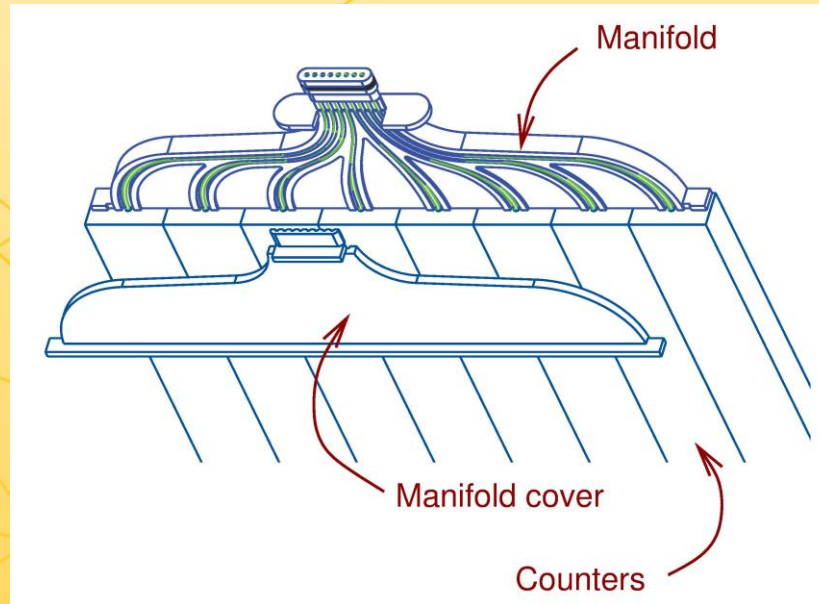


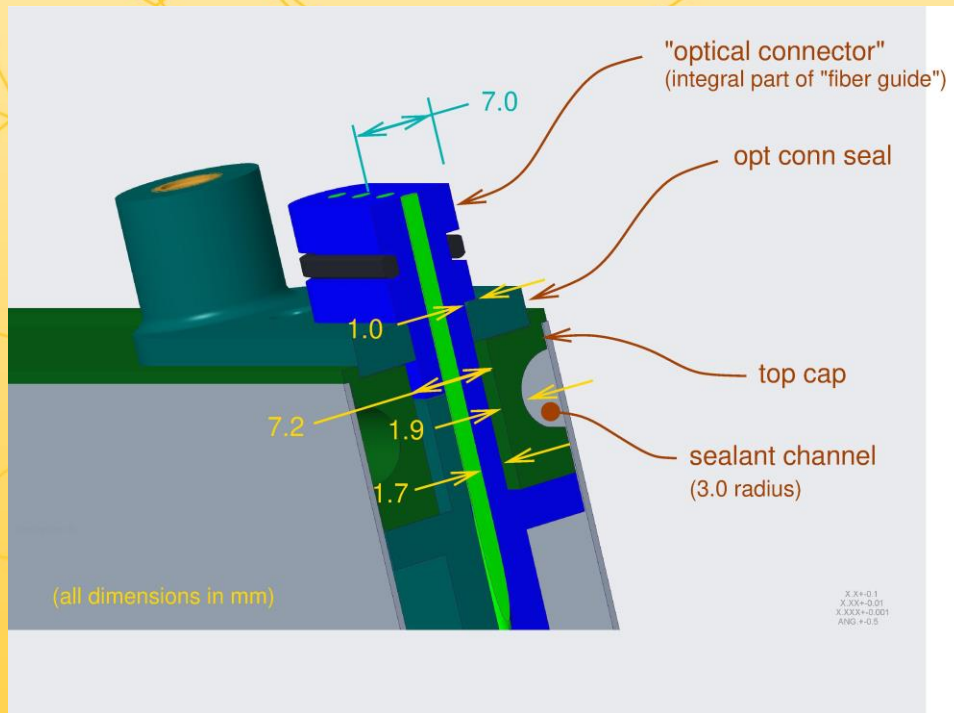
What sets module thickness?



Tom Chase
August 16, 2024

Min Thickness Constraint

17 mm counters attributable to moving electronics out of light case

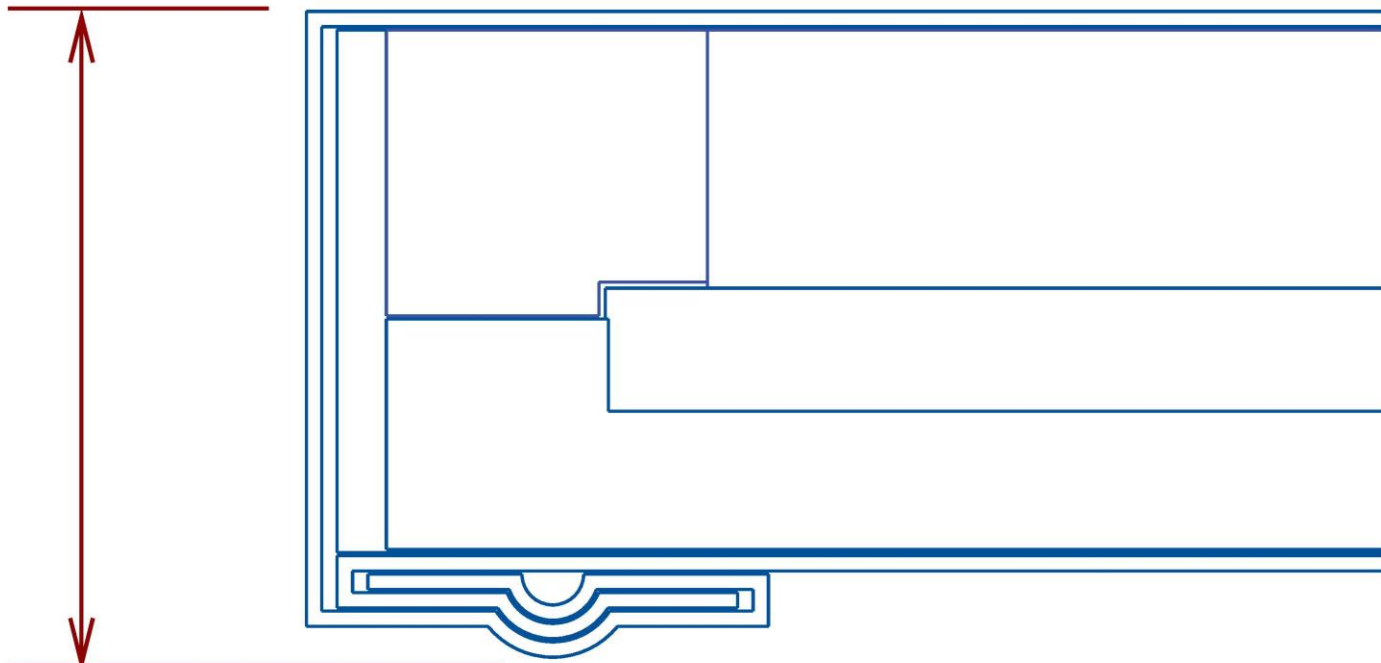


- Min thickness of "optical connector": 1.7 mm
- Opt conn needs 1 mm shoulder (min) for opt conn seal
- Sets opt conn thickness to 7.0 mm
- Need 7.2 mm slot in top cap to clear opt conn
- 3.0 mm rad sealant channel to ensure sealant flow
- 1.9 mm wall thickness at sealant channel

Counters should probably be reduced from 17 mm to 16 mm thickness to ensure 0.5 mm glue gap



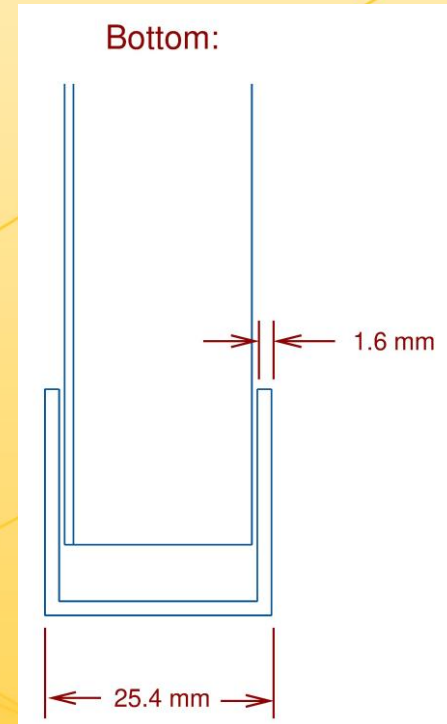
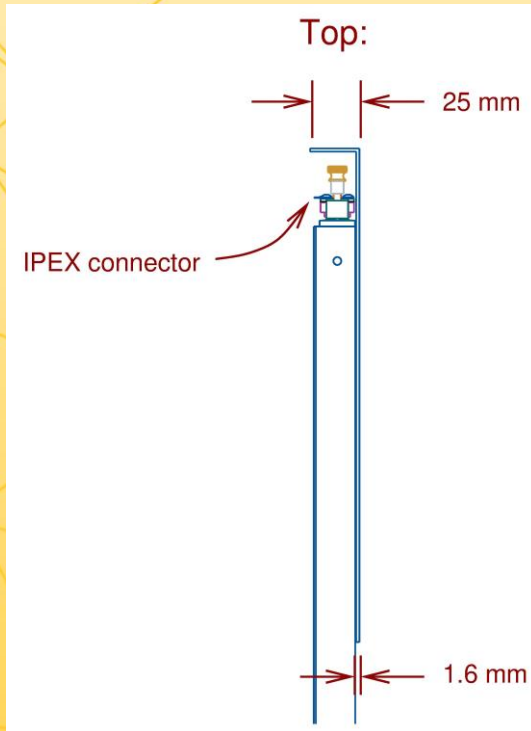
Light Case Seam



Max thickness for 16 mm thick extrusions: 22 mm
(allowing 0.5 mm glue thickness on front & back
+ 1 mm tolerances)



Cassette: Max Thickness



Top: 22 mm module + 0.5 mm glue gap + 1.6 mm (min) L-bracket (similar for H-track)

Bottom: Standard 25.4 mm U-channel

