

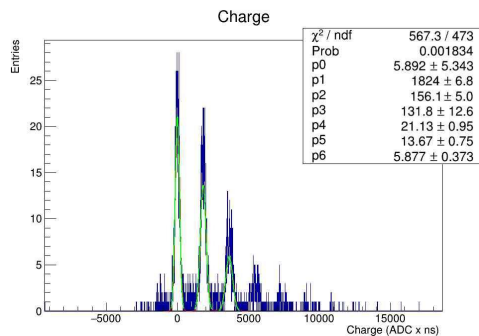
# M5<sub>6</sub> - Test Stand Results

15/08/2024

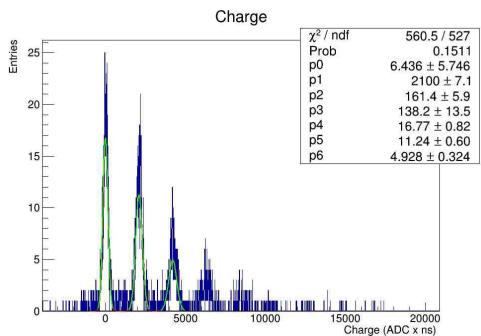
Renan de Aguiar

# Channel 1 - Charge Histograms

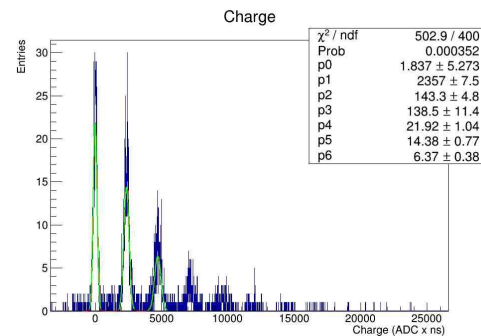
Bias = 45 V



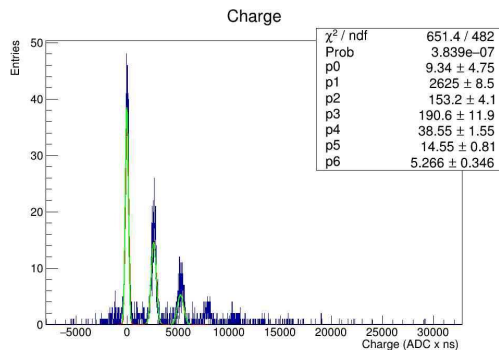
Bias = 45.5 V



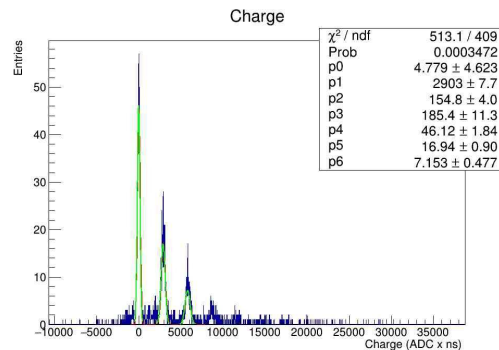
Bias = 46 V



Bias = 46.5 V



Bias = 47 V



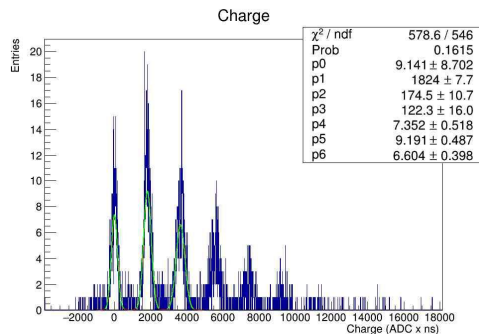
# Channel 1 - Summary

Bias	Signal output (Koheron/scope)		CAEN			Signal
	ch1 baseline	ch1 rms	RMS ch1	SPE amp. ch1	SPE amp. ch1	SNR ch1
V	mV	mV	ADC	ADC	mV	
45.0			3.38*	11.5*	1.41	11.4 +- 0.4
45.5			3.36*	12.94*	1.58	13.0 +- 0.5
46.0			3.44*	14.32*	1.75	16.5 +- 0.6
46.5			3.63*	14.74*	1.8	17.1 +- 0.5
47.0			3.69*	13.6*	1.7	18.8 +- 0.5

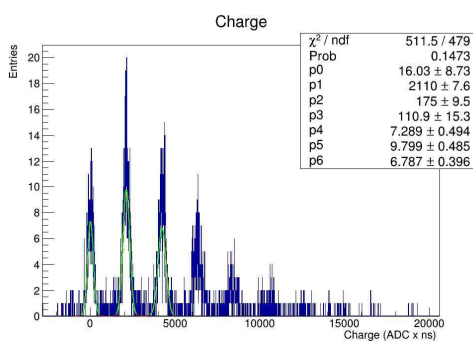
\* 14 bits digitizer

# Channel 2 - Charge Histograms

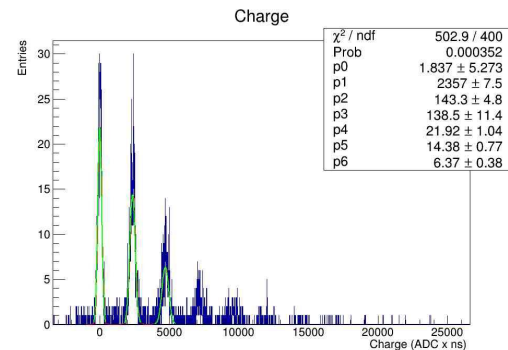
Bias = 45 V



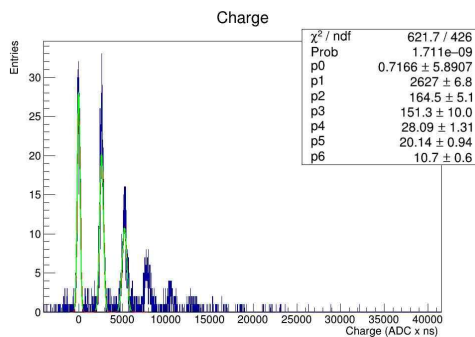
Bias = 45.5 V



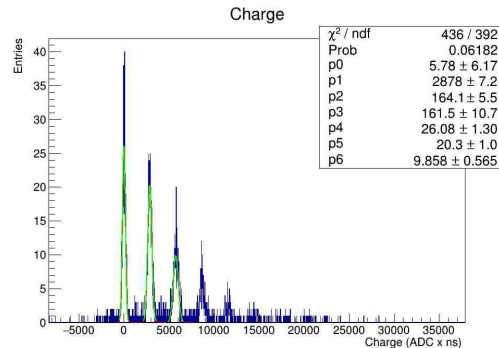
Bias = 46 V



Bias = 46.5 V



Bias = 47 V



## Channel 2 - Summary

CAEN			
RMS ch1	SPE amp ch2	SPE amp ch2	SNR ch2
ADC	ADC	mV	
3.63*	12.46*	1.52	10.5 +- 0.6
3.56*	14.28*	1.74	12.1 +- 0.7
3.7*	15.7*	1.92	15.2 +- 0.8
3.78*	16.1*	1.96	16.0 +- 0.5
3.92*	15.8*	1.93	17.5 +- 0.6