

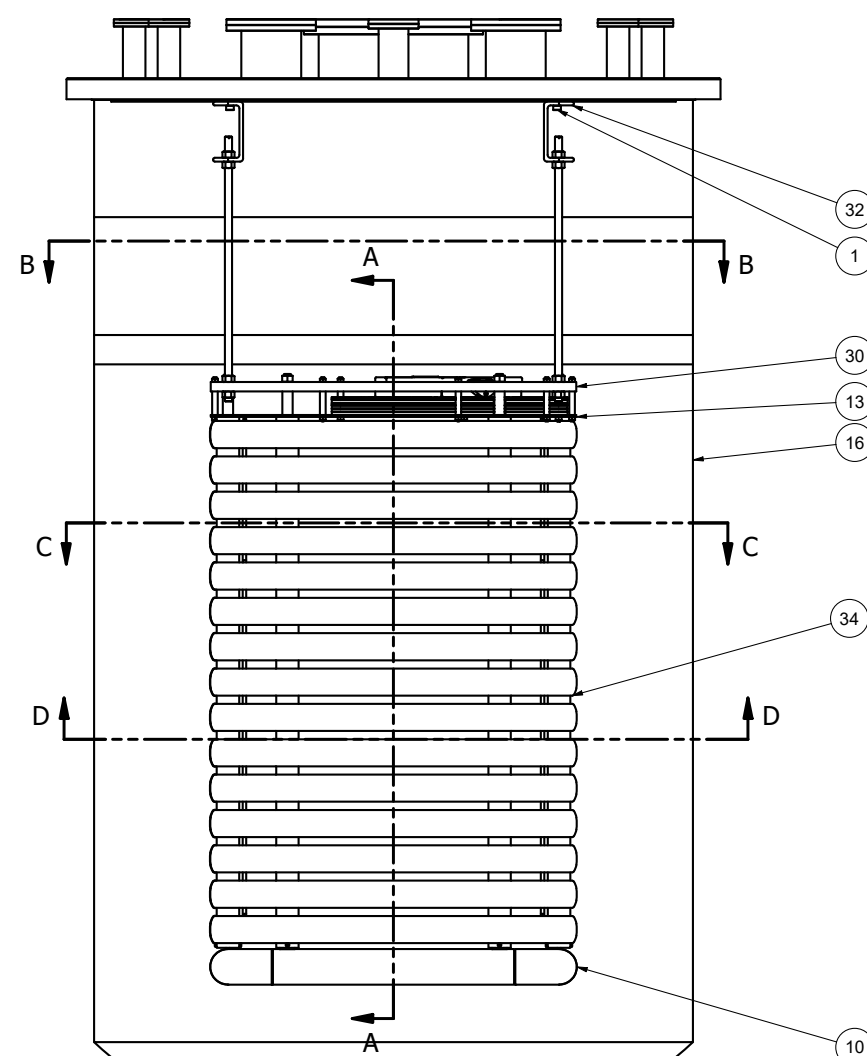
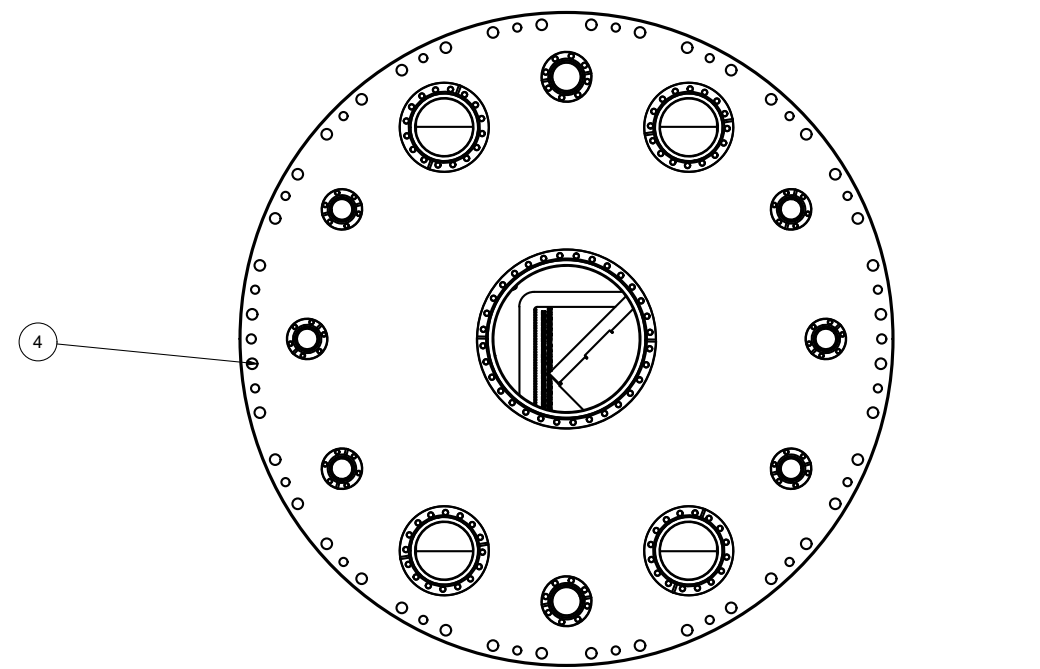
SBU parts for 2ton prototype at CERN

Ciro Riccio
APEX meeting
October 3rd, 2024

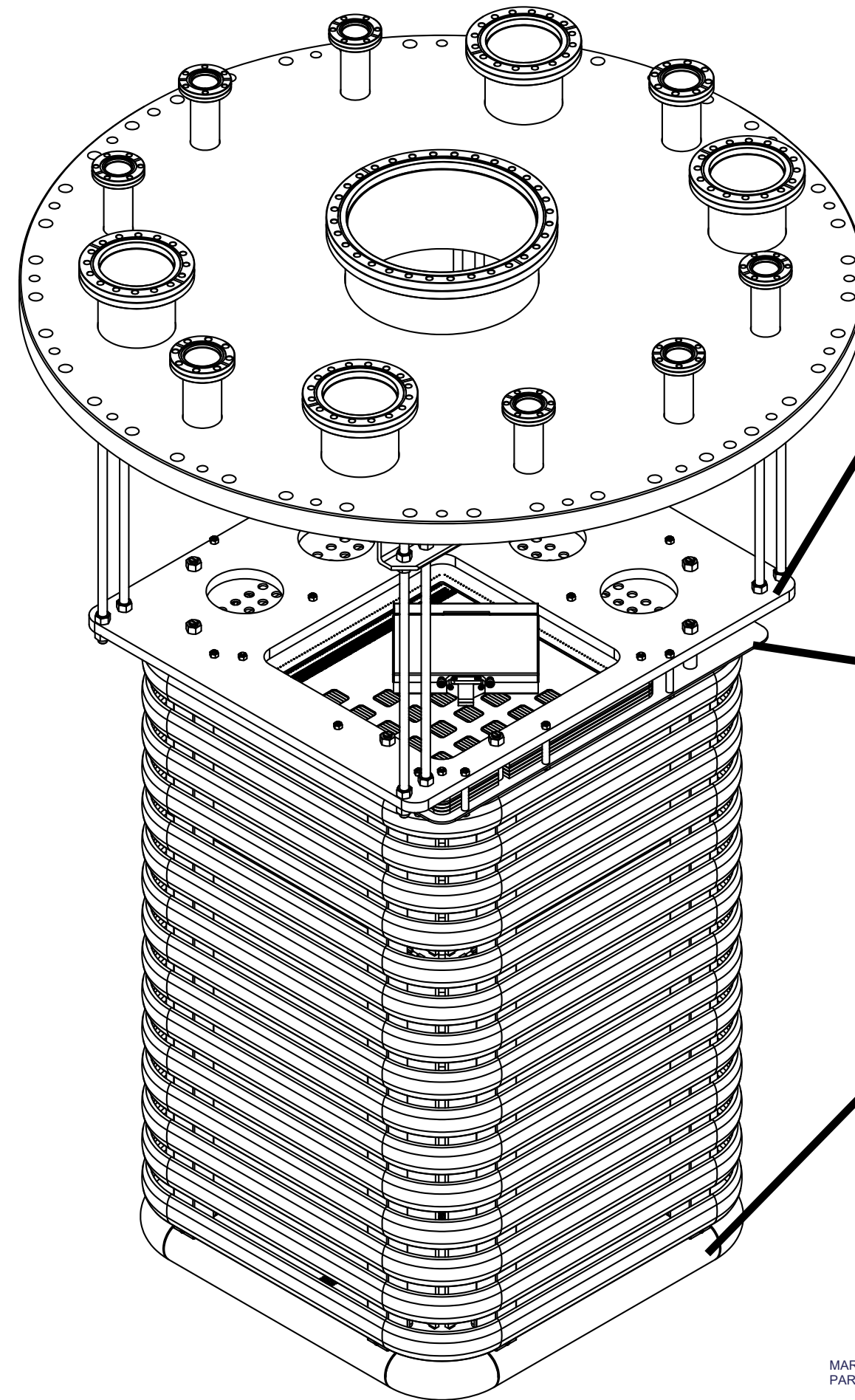


Stony Brook
University

SBU list of parts



VIEW1
SCALE 1 / 7



VIEW3
SCALE 1 / 4

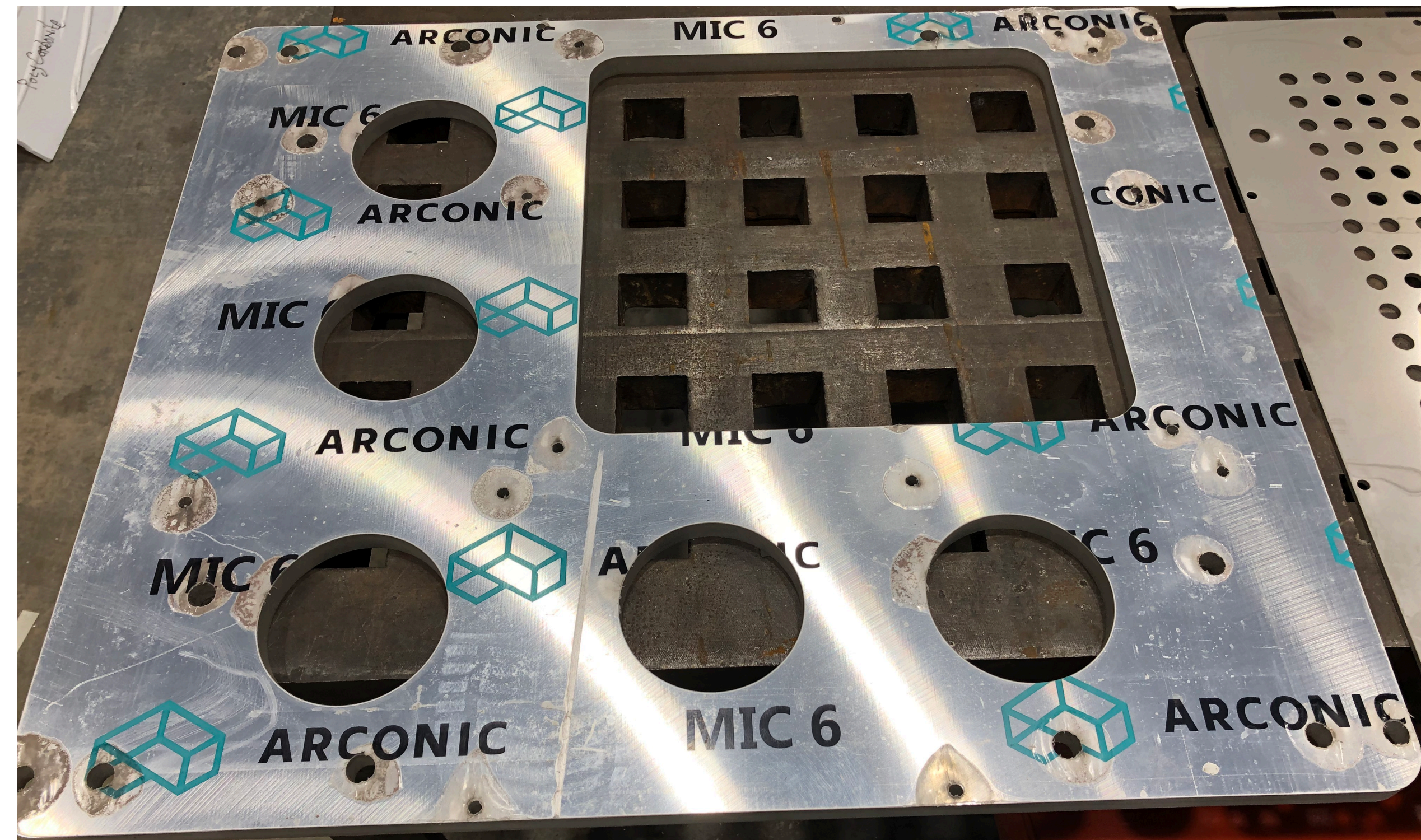
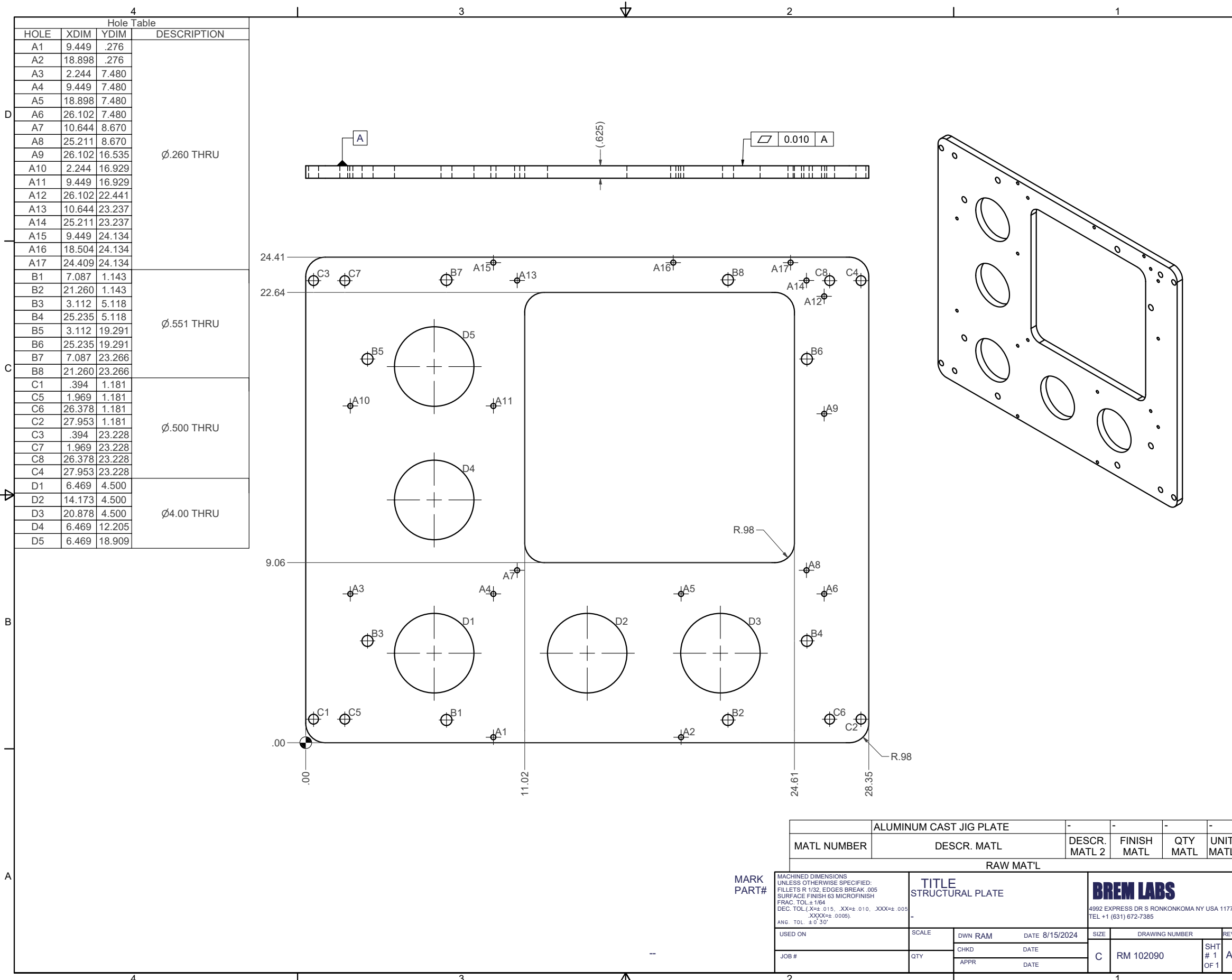
MARK
PART#

34	15	RM 102095	HD PROFILE LOOP	
33	8	RM 102093	INSERT BOTTOM FRP	-
32	2	RM 102092	TOP MOUNT	
31	24	RM 102091	CLIP XARAPUCA	-
30	1	RM 102090	STRUCTURAL PLATE	-
29	4	RM 102089	SPACER 1	-
28	8	RM 102086	ROD HANGING	-
27	8	RM 102083	ROD 1	-
26	4	RM 102080	XARAPUCA PLATE TOP	← x8
25	32	RM 102079	ROD 2	-
24	98	RM 102078	HEX NUT G-10 M6 X 1	
23	13	RM 102077	SPACER 2	-
22	17	RM 102076	ROD 3	-
21	40	RM 102075	NUT GAROLITE M12 X 1.75	-
20	8	RM 102073	ROD 4	-
19	8	RM 102072	SPACER 3	-
18	4	RM 102069	XARAPUCA PLATE BOTTOM	← x8
17	8	RM 102067	FRAME VERTICAL	
16	REF	RM 102063	TANK	-
15	8	RM 102057	INSERT TOP FRP	-
14	15	RM 102052	FIELD CAGE CONNECTOR	- 20 of
13	1	RM 102049	SHIELD PLATE	-
12	1	RM 101029	RDB 10 NODES WIDE	← RM102084
11	1	RM 101028	RDB 5 NODES WIDE	-
10	1	RM 101024	CATHODE	-
9	120	AS 1420 - 1973 - M3 x 10	ISO metric hexagon socket head cap screws	
8	120		SlipNutW_PCB	
7	120		Misumi-FB-305530	Misumi-FB-305530
3	120		AS 1968 - 1976 - 3	Helical spring lock washers (metric series)
6	REF		CRP THIN	
5	REF	RM 102096 NEW_assembly CRP	CRP THICK BOARD	
4	REF		CERN182_2T_Cryostat_head	
2	48		Aluminum Heavy-Duty Rivet Nut	MCMMASTER 94020A383
1	4		Stainless Steel Socket Head Screw	MCMMASTER 91292A147
ITEM	QTY	PART#	DESCRIPTION 1	DESCRIPTION 2

Parts list

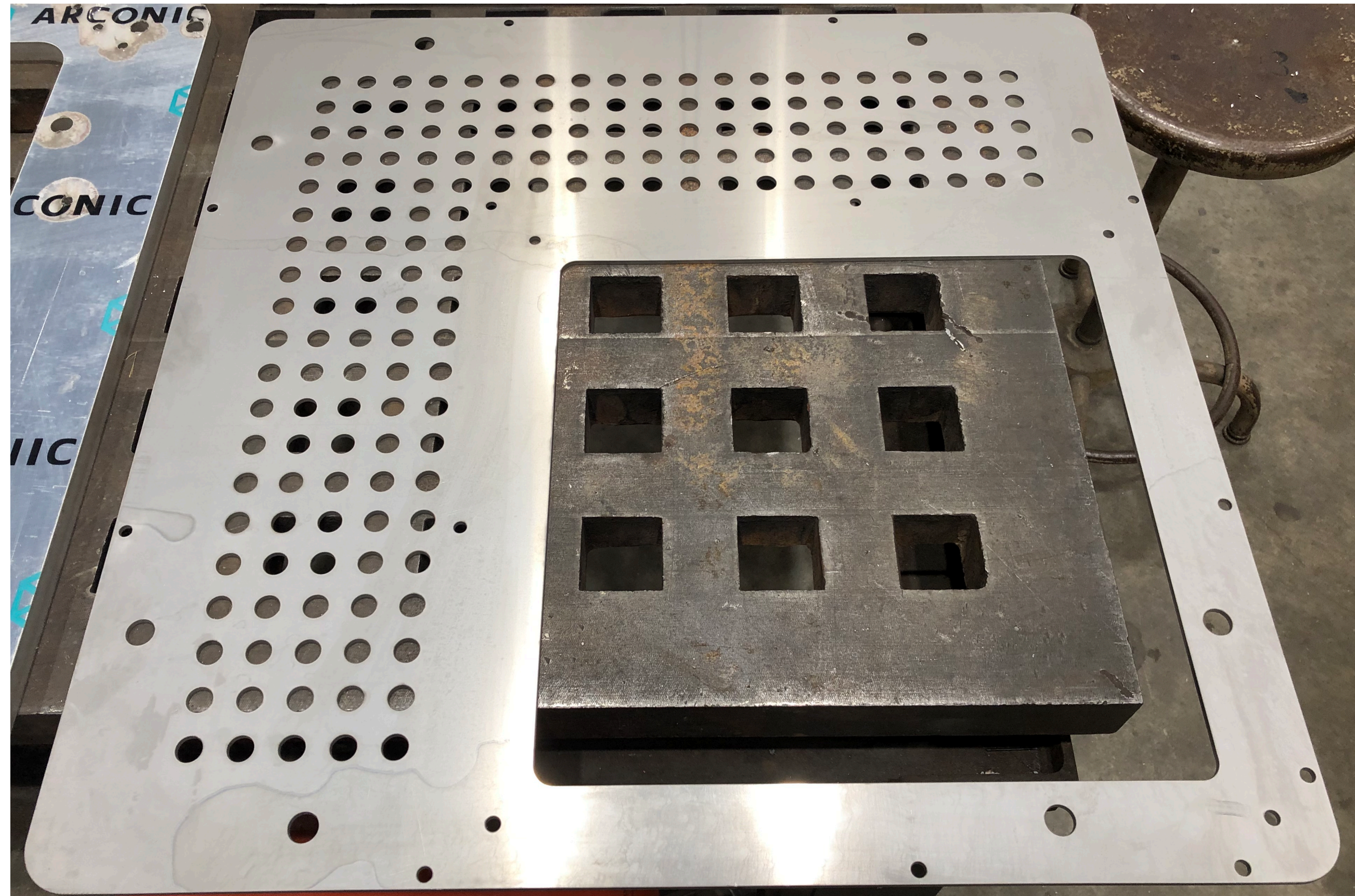
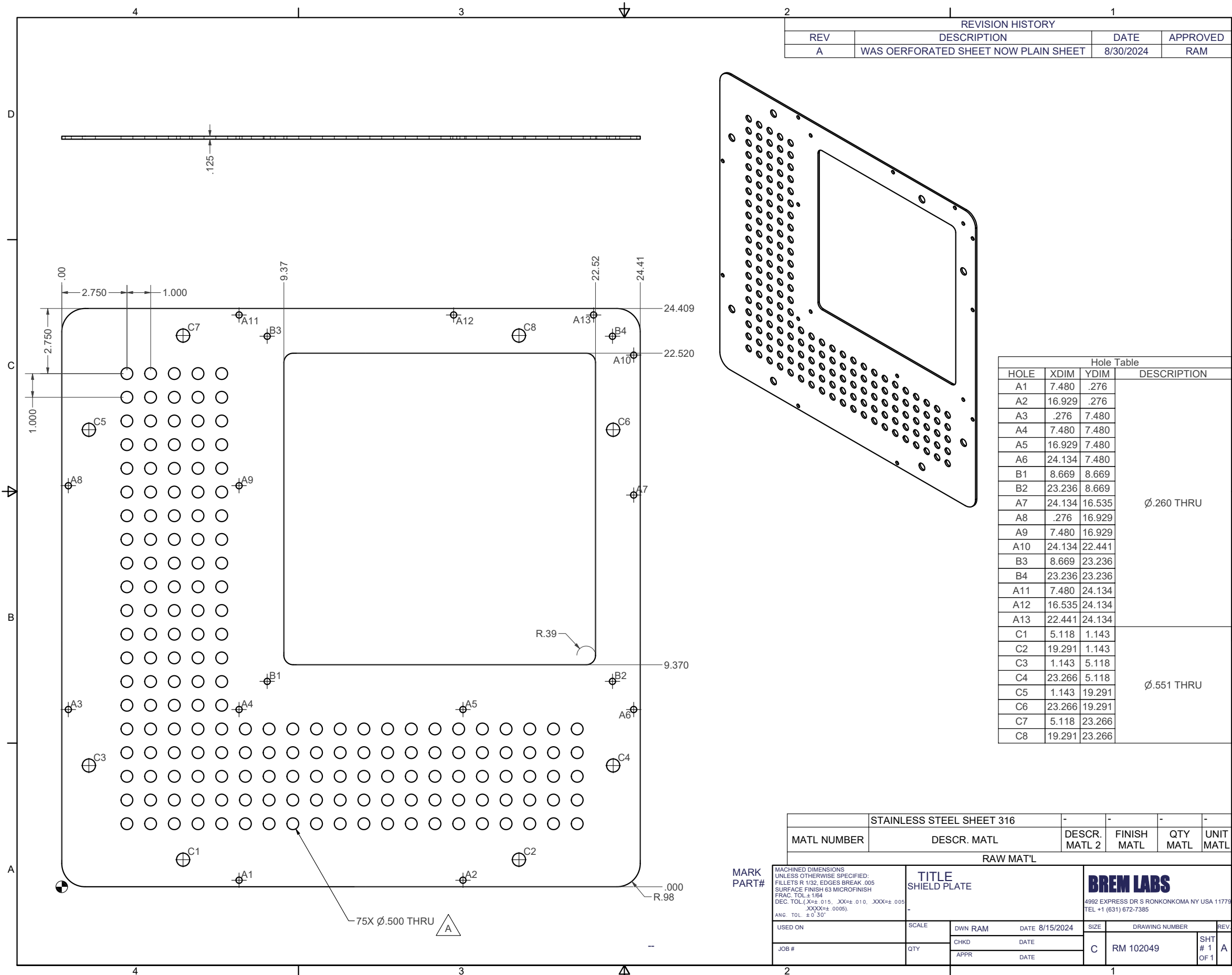
Structural plates

Procured and already cut by Long Island WaterJet

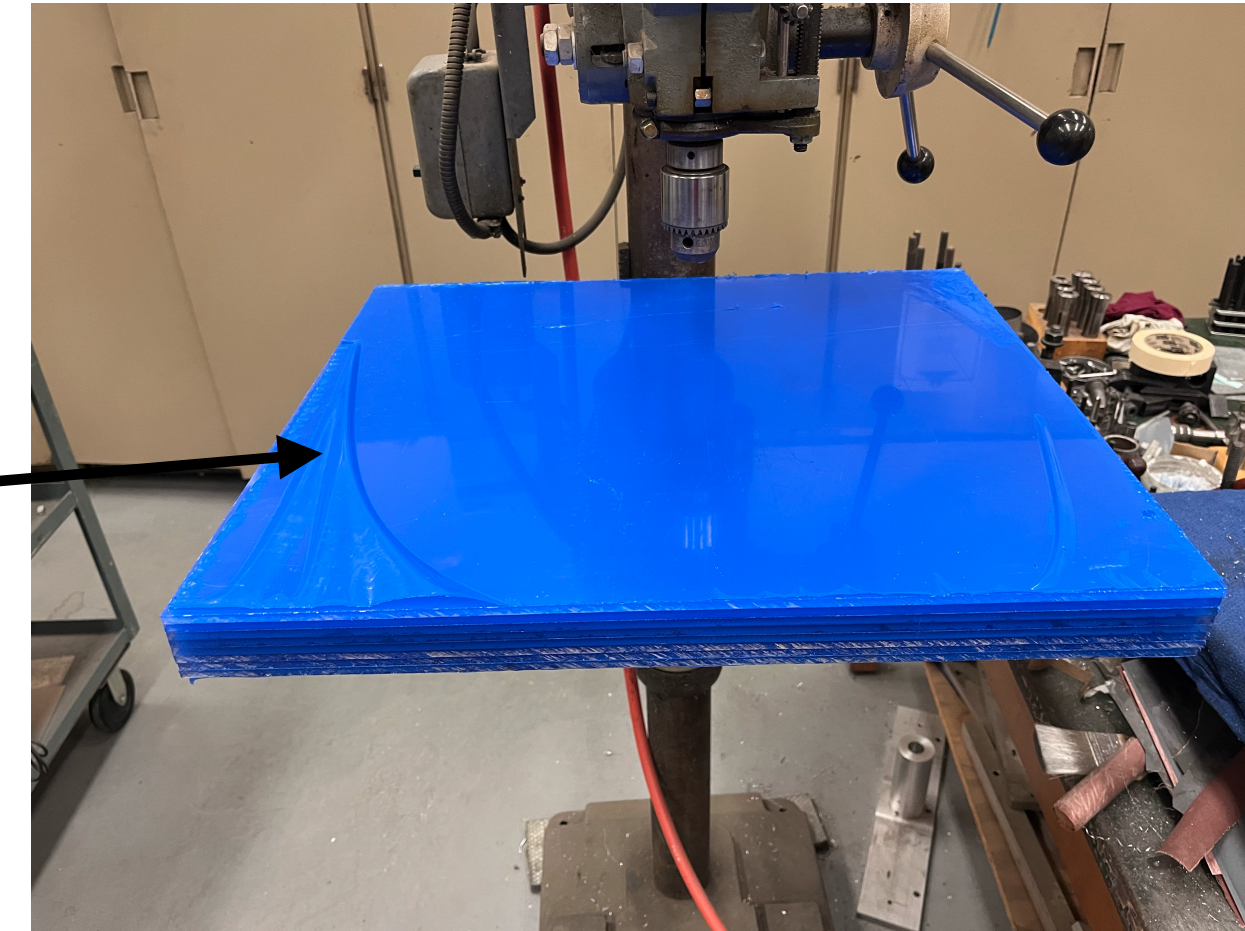
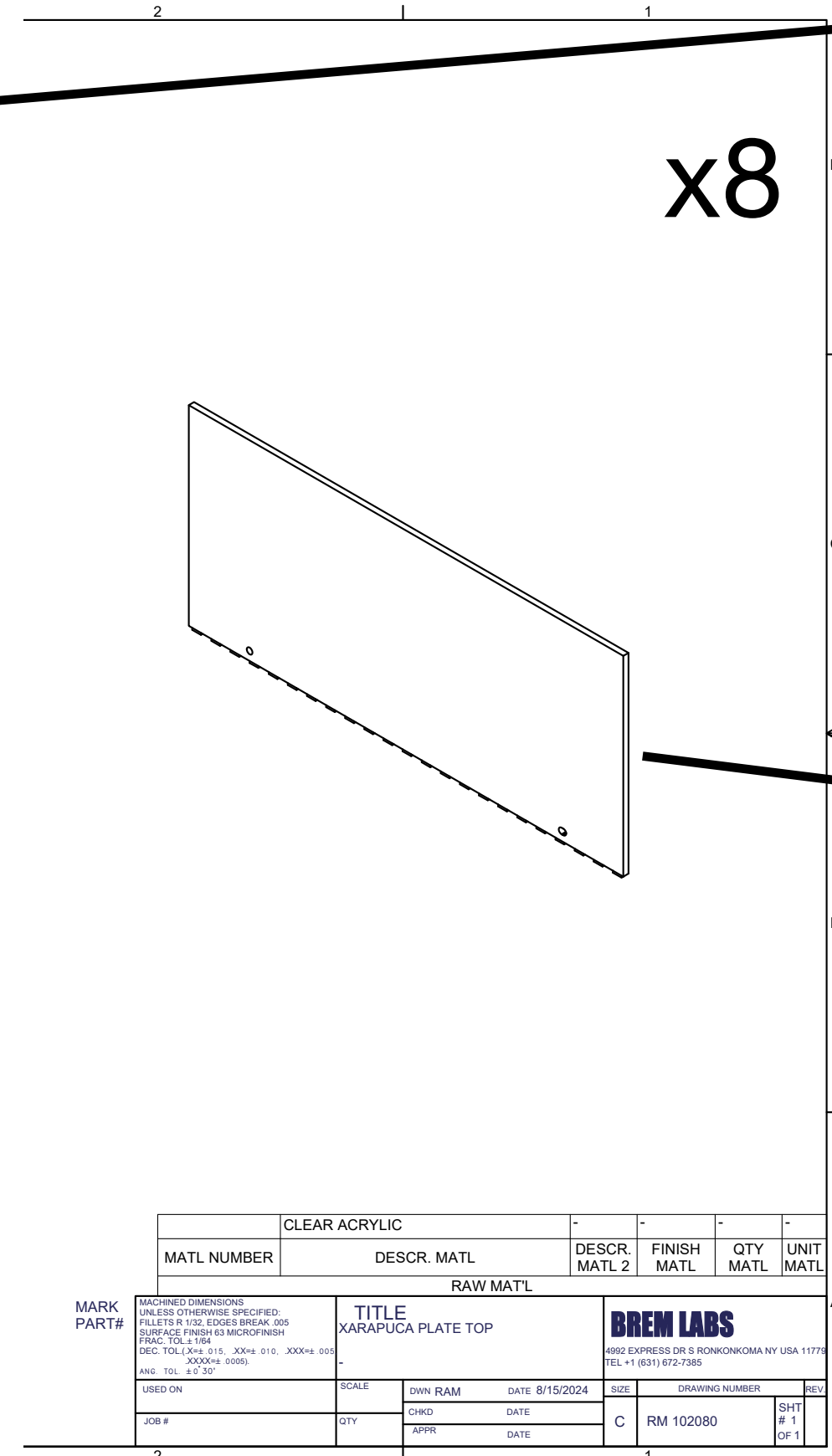
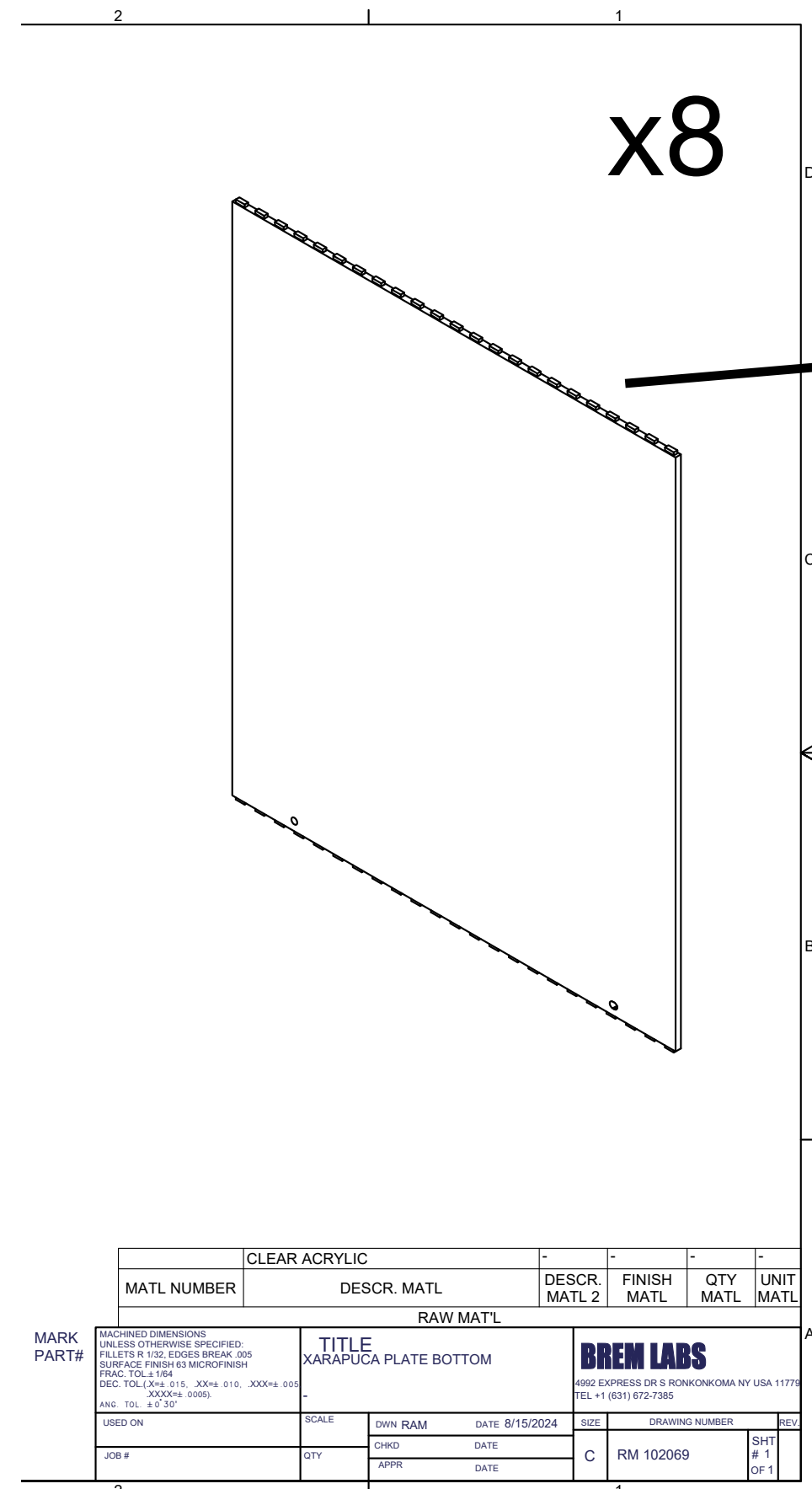


Shield plates

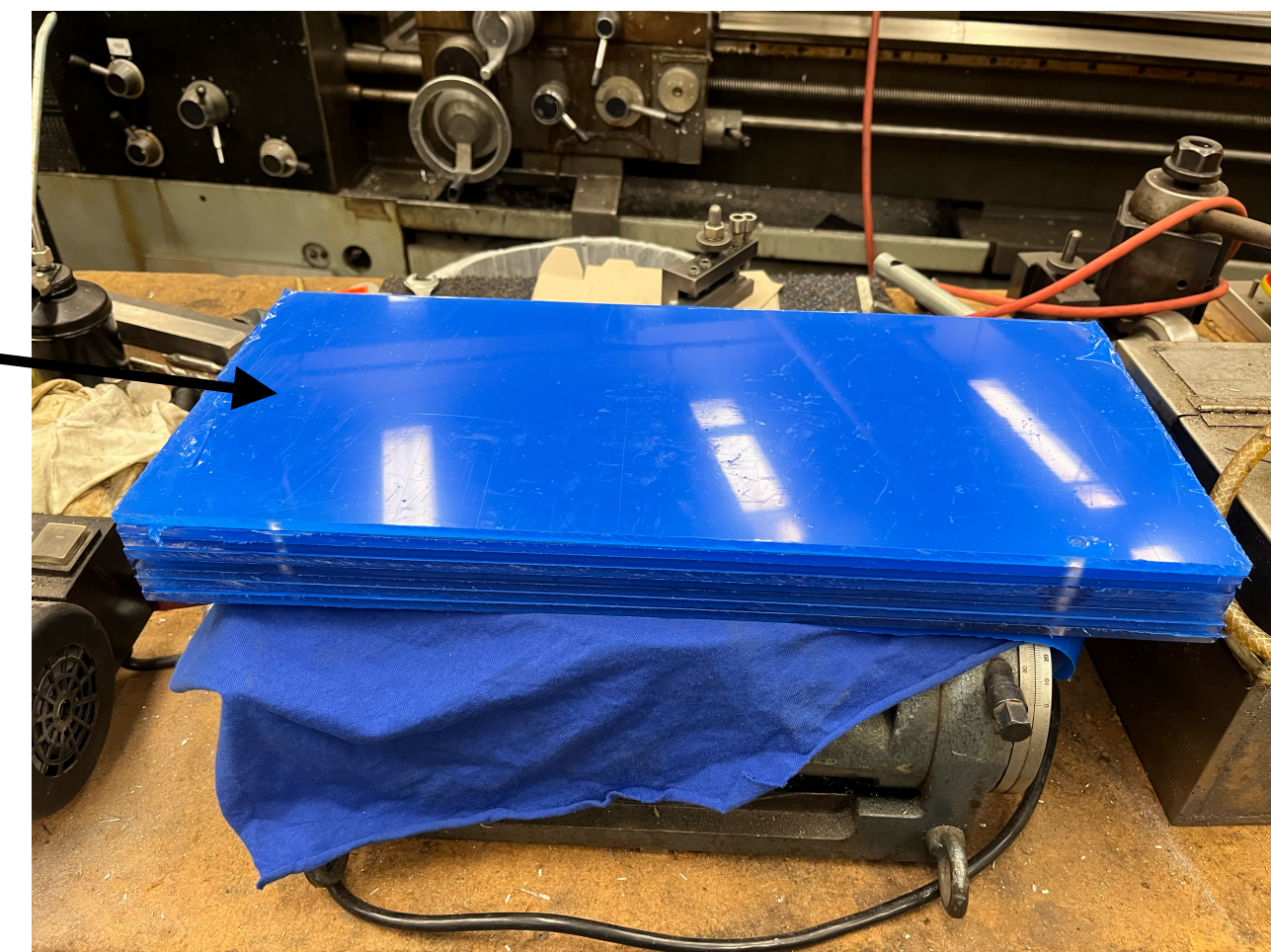
Procured and already cut by Long Island WaterJet



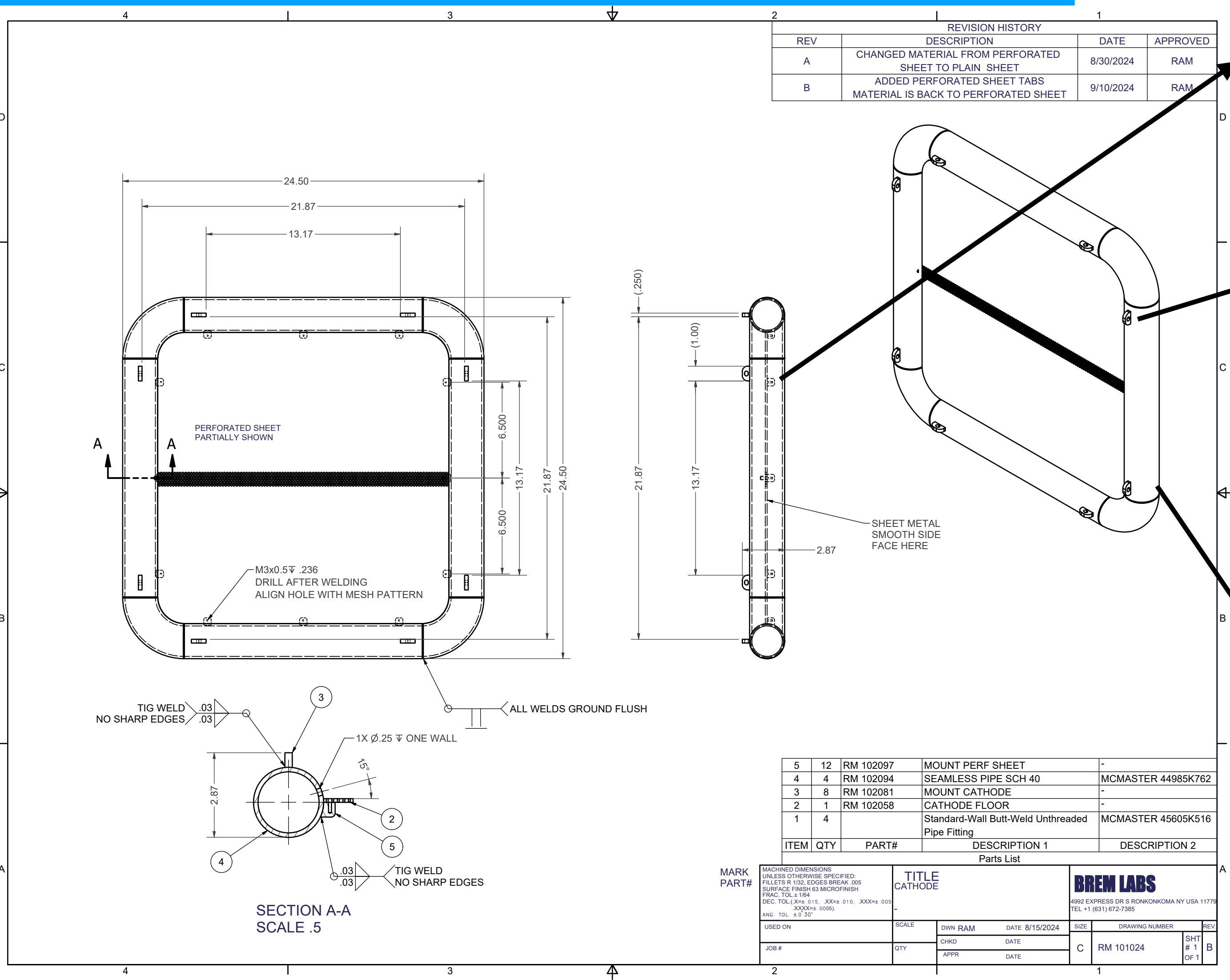
Fake X-ARAPUCA



Procured and ready to be shipped



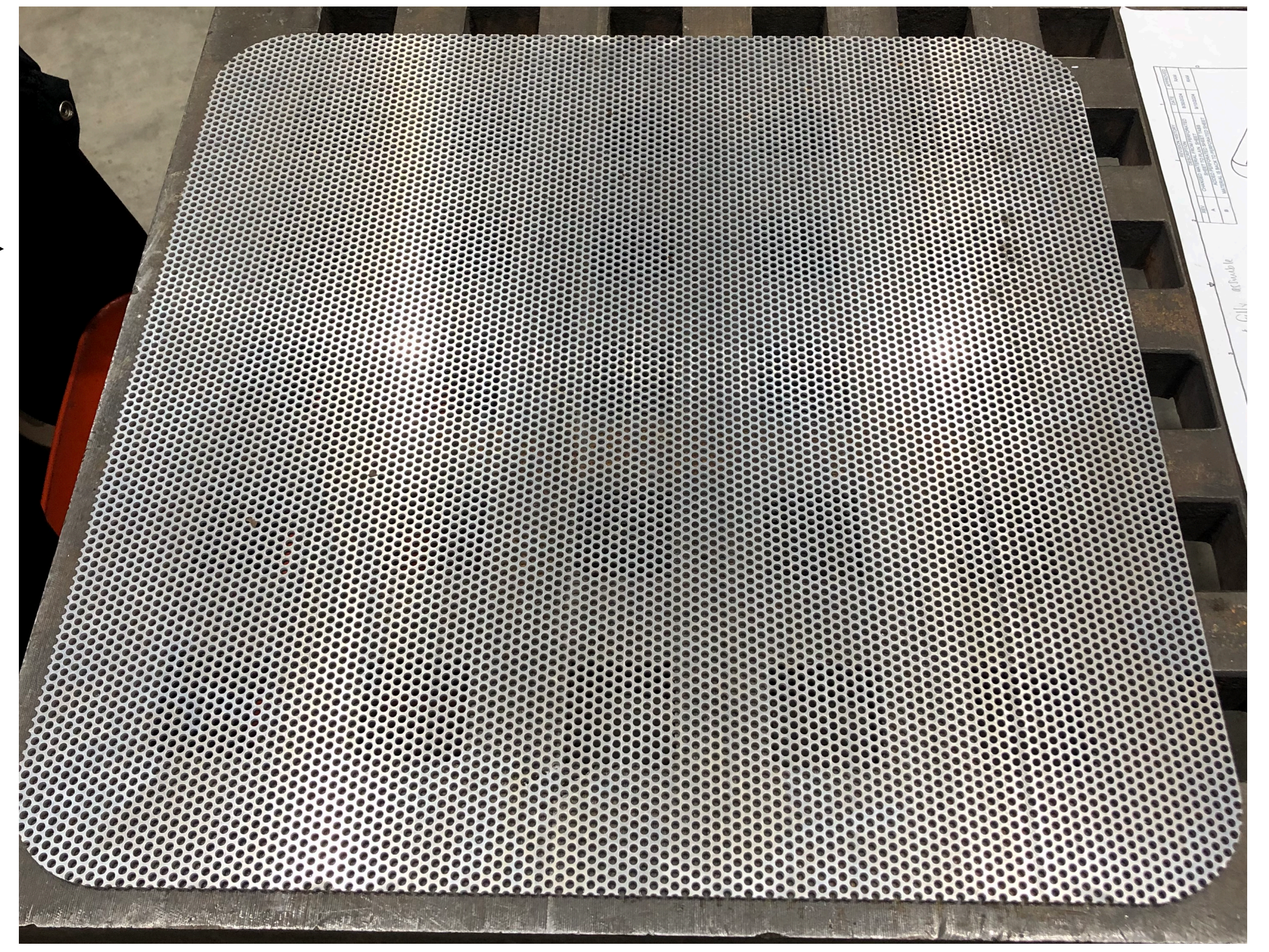
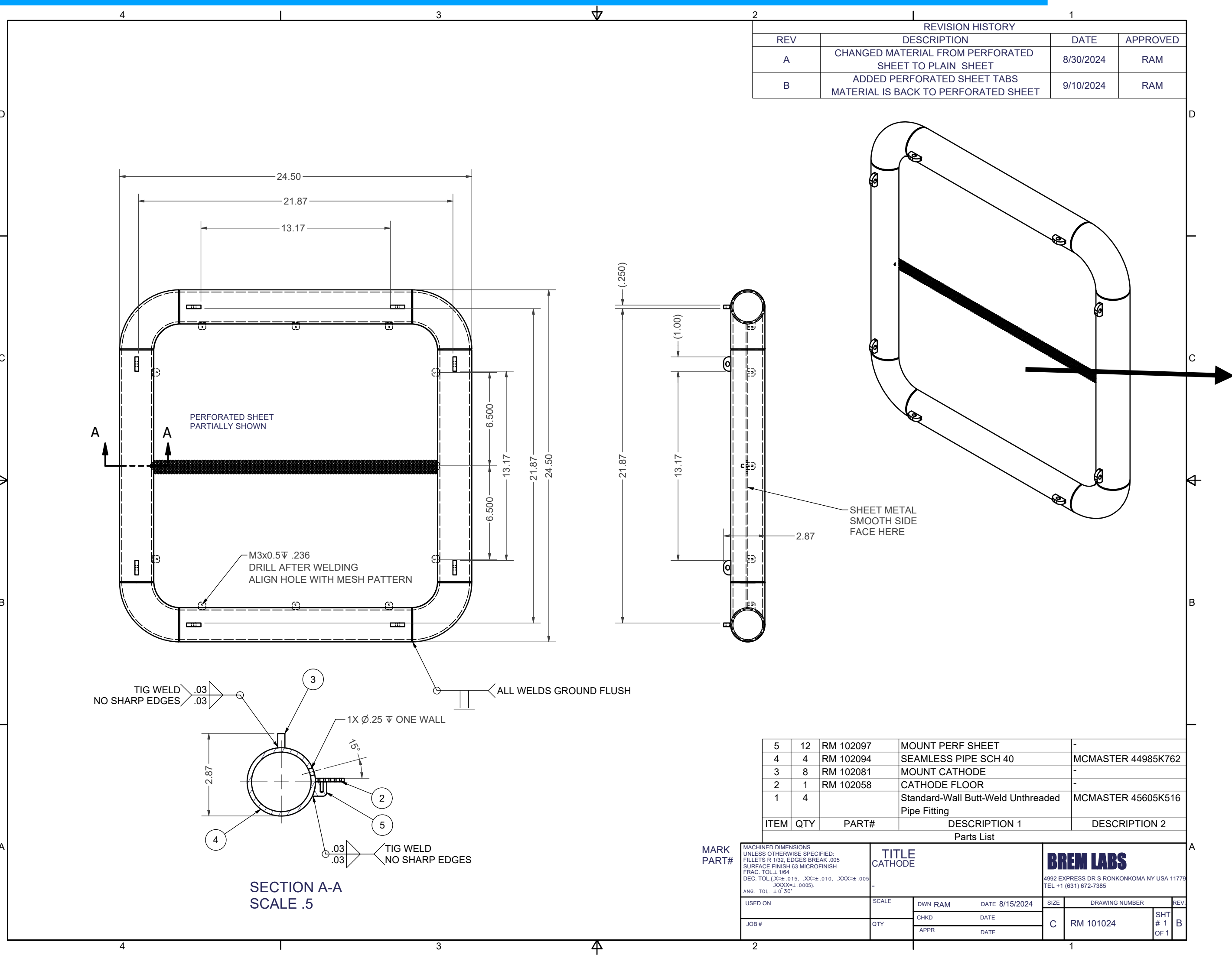
Cathode



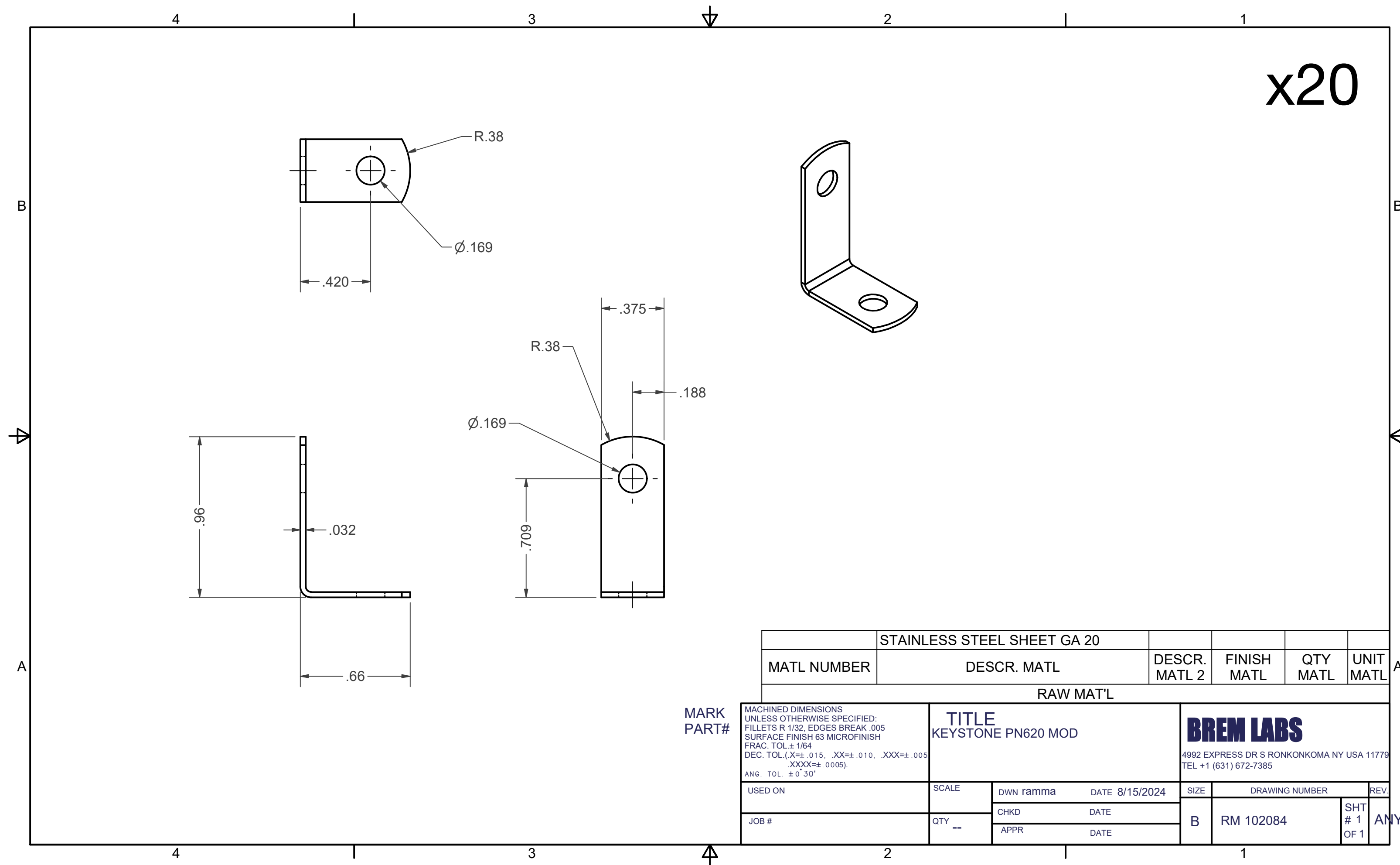
Welding will be completed by Monday

Cathode

Mesh procured and corners cut by Long Island WaterJet



Corner brake



Procured and already cut by Long Island WaterJet but not bend yet. It is being done at SBU

Timeline and next steps

- Welding of the cathode tubes started today and the full assembly of the cathode will be finalized by Monday
- We will ship all our parts as soon as possible but not later than Friday October 11th
- We will use FedEx and should be at CERN in 2-3 business days
- I need the CERN shipping address

Backup
