

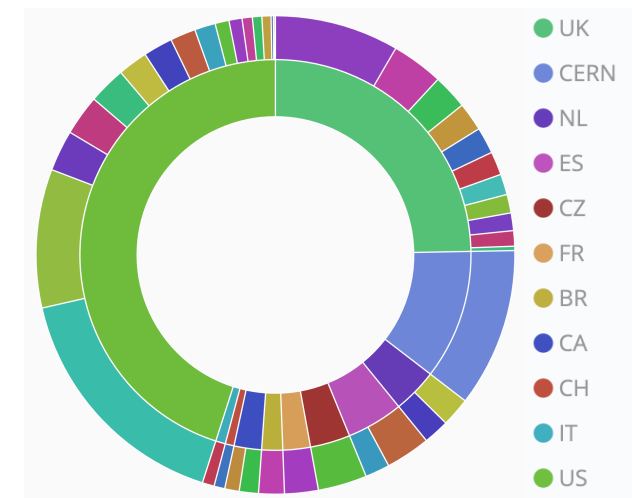
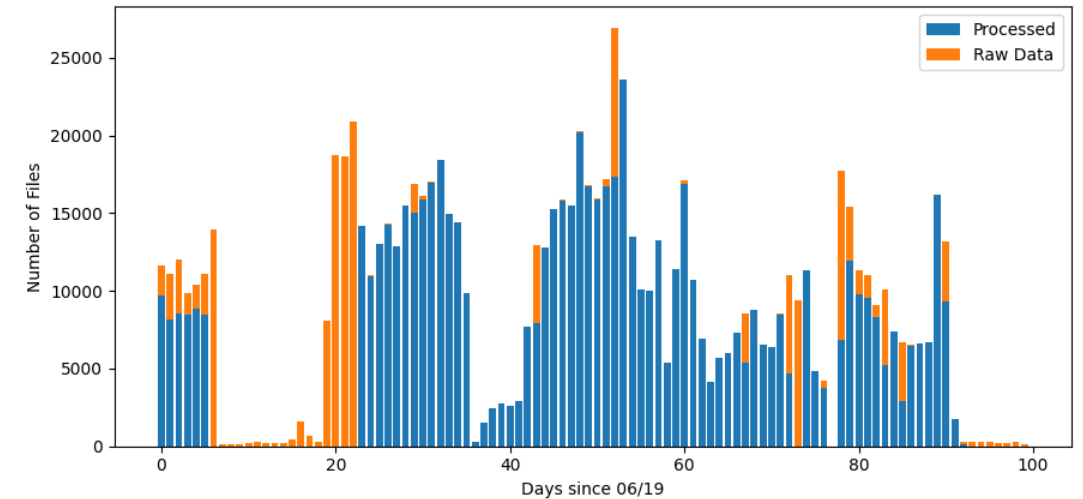
CRAB Meeting 20 Dec, 2024

- Plan for updating Resource Request model
- Report from Data Management on storage usage
- Update on Production and Dataset Coordination
- AOB

DUNE Resource Request model

- resource request model needs to be updated
 - underutilization of CPU resources
 - close to the limit of storage utilization
 - no active projections of GPU needs in the model
- what is the cadence for production processing of ProtoDUNE data
 - currently have keep-up processing, is the output being utilized?
 - reprocessing?
 - skimmed datasets?

ProtoDUNE HD Daily Keep-up



CPU Fraction by country/site

Current Resource Model Inputs

- each detector is separate: PDHD, PDVD, 2x2-MINERvA, FD1, FD2, ND-LAr+TMS, SAND
- detector resources calculated for raw data + reco +sim
 - raw data - event size and number of events
 - data reco - output size, CPU/GPU time, mem for 90% of jobs
 - sim - number of events, output size, CPU/GPU time and mem for 90% of jobs
 - only annual granularity - no breakdown by month
- data retention policy then used to calculate annual need for storage
- processing time taken from number of events and CPU/GPU time and scaling by memory needs

Request for updates for CY2025

Detector	raw data	reco workflow	sim workflow	reco evts	sim evts
PDHD	Christos	DRA	DRA	DRA	DRA
PDVD	Dominique & Flavio	DRA???	DRA???	DRA	DRA
2x2-MINERvA	???	Matt Kramer	Matt Kramer	Pedro + Zoya	Pedro + Zoya
FD1	n/a	Dom + Laura	Dom + Laura	n/a	Chris + Ines
FD2	n/a	Dom + Laura	Dom + Laura	n/a	Chris + Ines
ND-LAr+TMS	n/a	Linda + Matteo	Linda + Matteo	n/a	???
SAND	n/a	Linda + Matteo	Linda + Matteo	n/a	???

Improved Documentation of the Model

Discussion