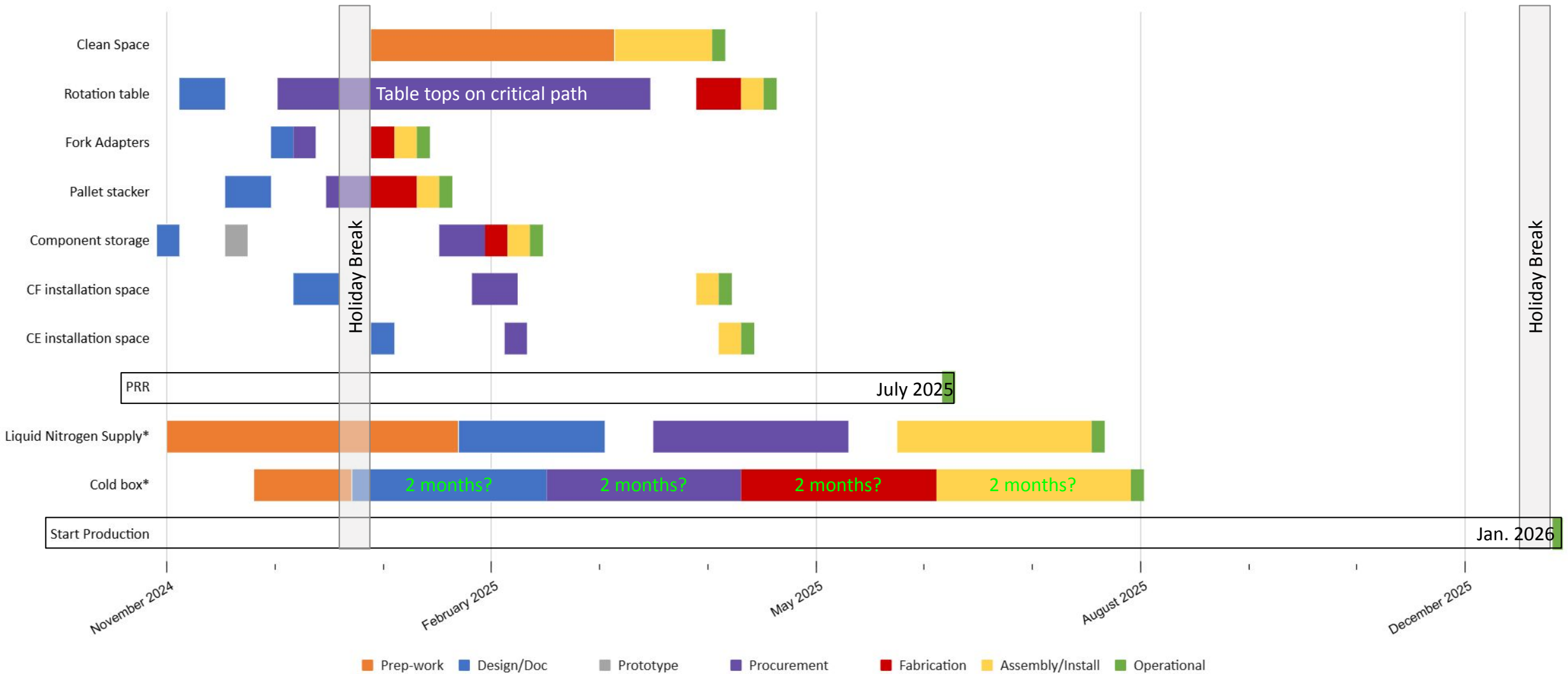


Yale CRP Assembly Site Timeline

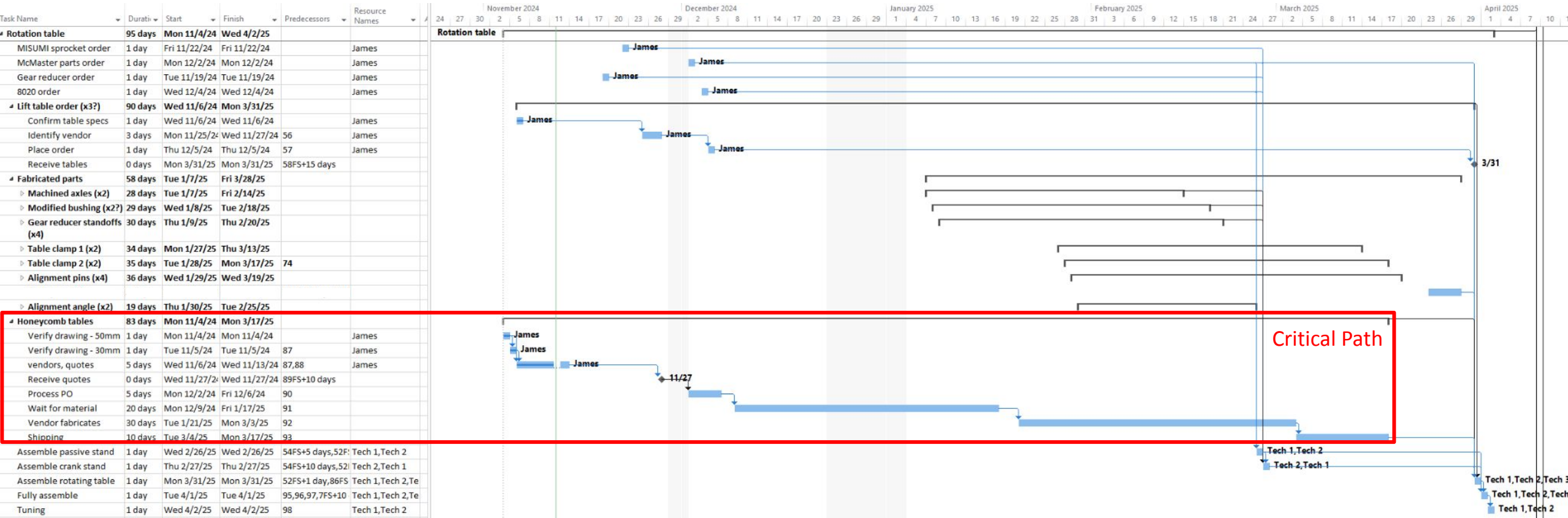
Yale DUNE Team

Yale CRP Assembly Site Timeline



Yale CRP Assembly Site Timeline

Rotation table timeline



Yale CRP Assembly Site Timeline

Cantilever racks, pallet stacker, fork adapters:

Week of 11/18: Assembly of 1st cantilever CRU storage rack, pallet stacker (PS) fork design/documentation

Week of 11/25: Complete PS fork design/documentation

Week of 12/02: Complete design of fork adapters***

Week of 12/09: Fork adapter procurements***

Week of 12/16: Procurement of PS and modified forks

Weeks of 12/23, 12/30: Holiday break

Week of 01/06: Fabrication of PS forks and fork adapters***

Week of 01/13: Fabrication of PS forks, assembly of fork adapters at WL

Week of 01/20: Install modified forks on PS. Test cantilever rack, fork adaptors, and PS with mock CRU

Week of 01/27: Modify rack design as needed, and move forward with procurements for additional racks and storage.

CRP consortium near term timeline

<u>Item</u>	<u>Location</u>	<u>Week/Month</u>
Final checks/prep of CRPs in NP02	CERN	Nov. 11 th 2024?
Transfer of LAr from NP04 to NP02	CERN	Nov. 25 th 2024?
Anode samples from Technomech?	CERN	Nov. 11 th 2024?
<i>Anodes must be validated once received, ~1 to 2 weeks</i>		
<i>Anode production after order, ~6 to 8 weeks</i>		
Assembly of CRP8 with new anodes	CERN	Jan. 2025*
<i>"...schedule is very difficult to freeze with the different partners." -Dominique</i>		
PRR Bottom CRP ground plane	CERN?	Jan. 2025
PRRs for PCB anodes, AB/EC	CERN?	Feb. 2025
PRR: Top CRP assembly sites	Grenoble	Mar 2025
New test of Bottom CRP feet in CB	CERN	Mid 2025