

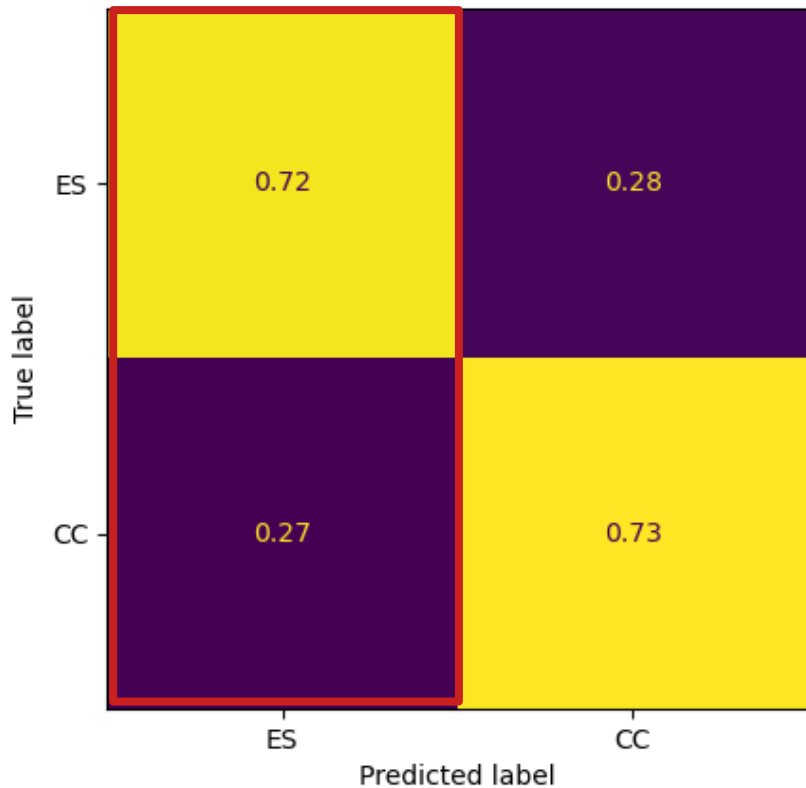
# Channel tagging BDT

Janina Hakenmüller

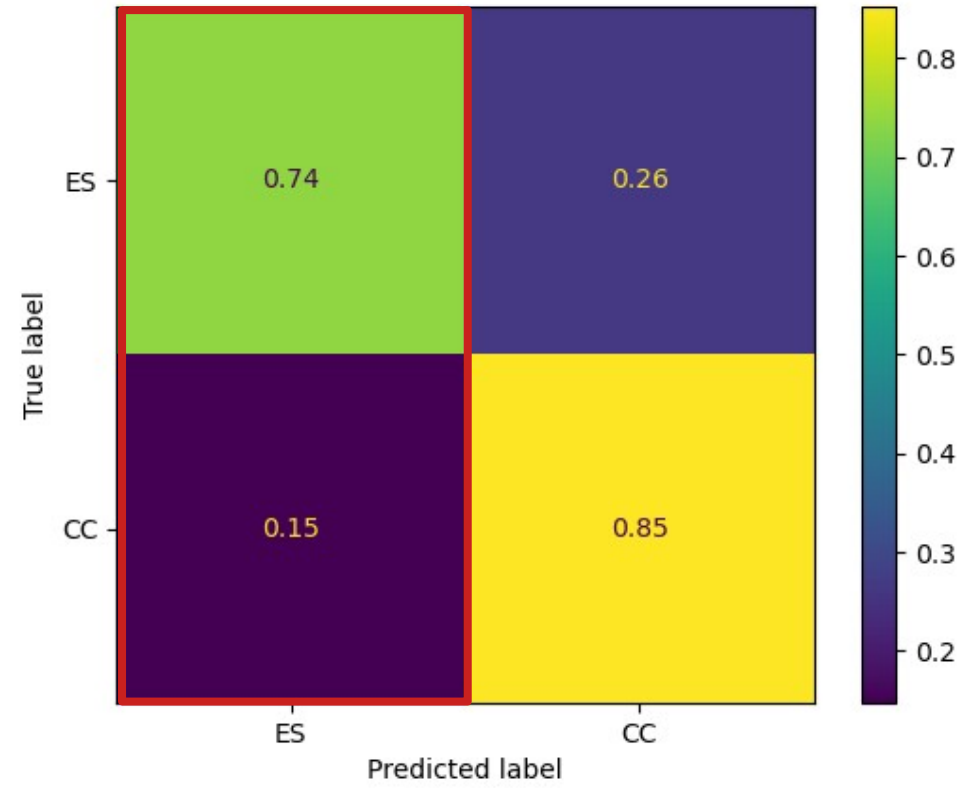
15<sup>th</sup> of January, Pointing meeting

# Channel tagging BDT (no energy cut)

with background



no background

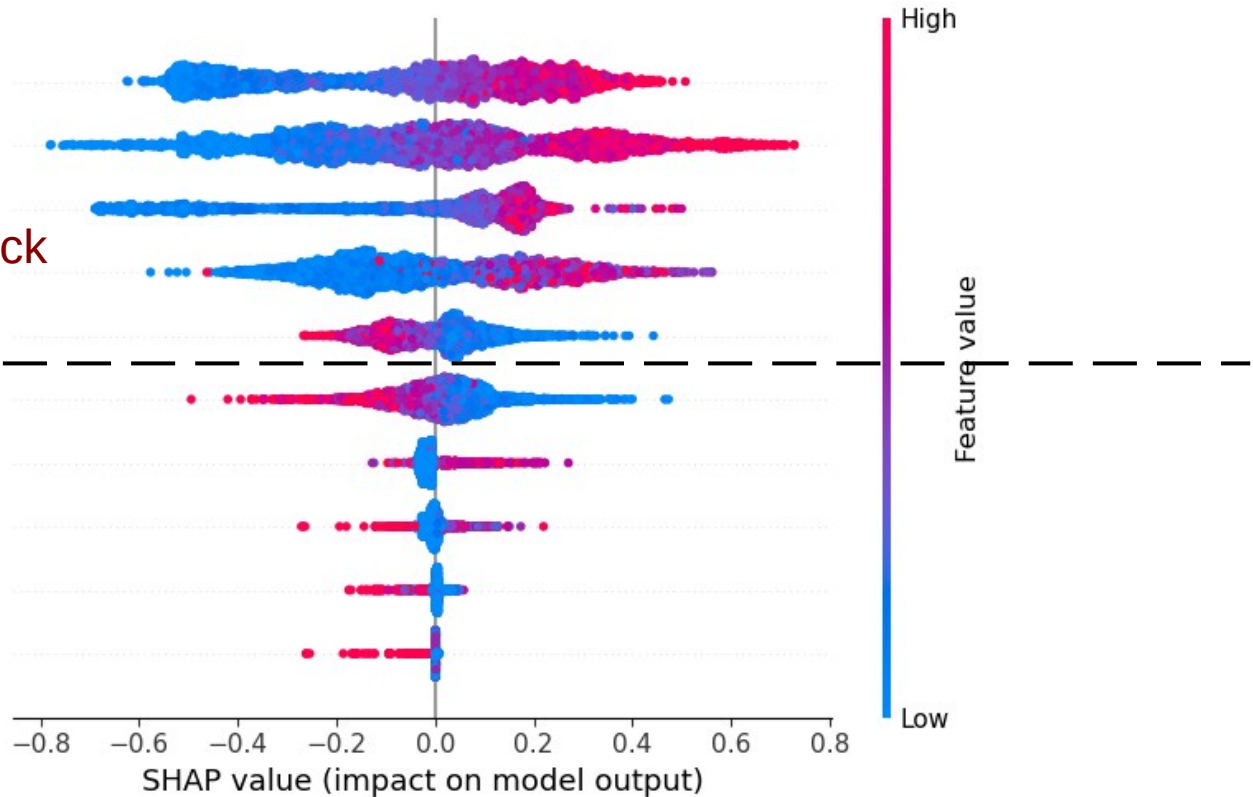


Accuracy: both at ~85%

# Feature importance: **without** background

total charge  
number of hits  
number of space points  
avg. distance to primary track  
highest track charge

track length  
avg. charge brems  
avg. pos. track ends  
avg. angle to prim. tracks  
number of tracks



# Input parameters

