

ESCC Winter 2014 SLAC site report

Organizational changes since last ESCC

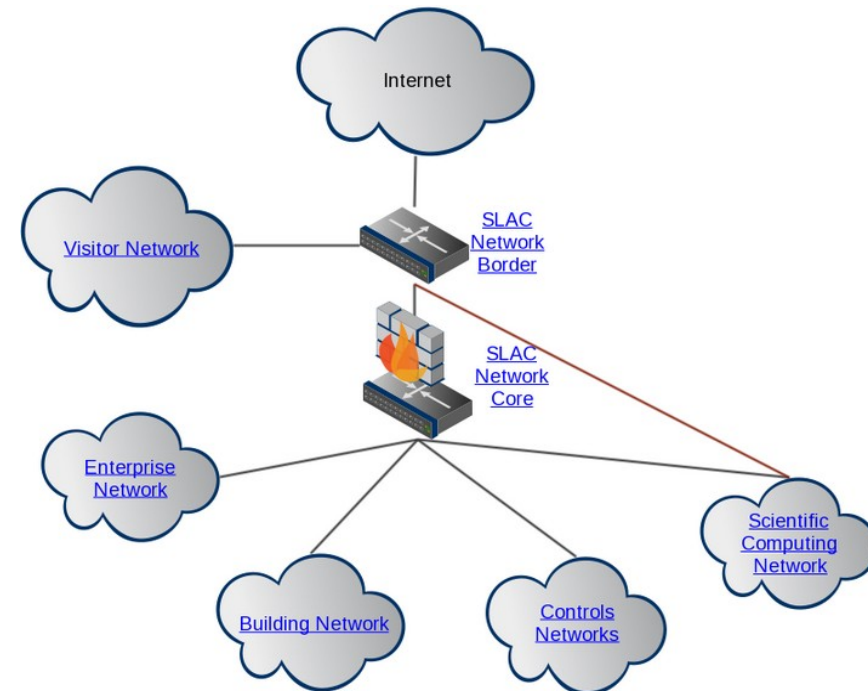
- SLAC has a new Cyber Security officer (CISO), Ben Calvert
- Cyber Security Improvement Project
 - Multiple working groups and review boards
 - More on the technical network aspects later
- Positions open for UNIX HPC sys admin



Technical developments - Security

• As part of the Cyber Security Improvement Project, we will be busy working on the following projects for the remainder of FY14:

- Integrated Security Appliances (firewalls), ScienceDMZ
- Adopt open source IPAM solution, required for IPv6 deployment
- Wireless upgrade (Cisco WCS), developing internal wireless
- IDS capabilities - BRO



Technical developments - HPC

- Stanford Research Computing Facility online as of last January
 - SLAC occupancy expected by Apr 2014; under review
 - Planning to provide 100G backbone and 40G DTNs to HPC services; main workhorse Cisco N7K and FEX.
- Diverse fiber route between SLAC and Stanford completed



This can take from 20 secs up to 10 minutes, depending on what is cached. Works best for routers in N. America, Europe, Pakistan, Taiwan and Australia. [[Documentation](#) | [Help](#) | [View VTrace cache](#) | [Pinger Landmarks](#) | [perfSONAR Landmarks](#)]



Maxmind database

Target: From Landmark:

Choose Landmarks in ~ 20 countries



Click for more info

Accuracy error

<http://www.slac.stanford.edu/comp/net/tulip/>

Run traceroute from landmark to target

Use Trilateration Utility for Locating IP hosts (TULIP) to locate router

- pings target router from multiple known landmarks,
- derives distance from min RTT
- uses trilateration to locate target
- accuracy = landmark density (#/M sqkm)
- enough landmarks in N. America, Europe, Pakistan, Taiwan and Australia for reasonable accuracy
 - 950 landmarks from PingER, perfSONAR & PlanetLab, ~300 work at any time. **Want more**
- **Developed by SLAC / NUST (Pakistan)**

Working landmark distribution



Locate router via TULIP

Autonomous System Number

Initiating traceroute from www-wanmon.slac.stanford.edu to nust.edu.pk (111.68.101.101)

Hop #	Hostname	IP Address	ASNet	RTT	RTT bar	Coordinates	Hop Distance
1		134.79.197.131	AS3671	0.435 ms		37.4178,-122.2020	0.1 km
2	rtr-core2-p2p-serv01-01.slac.stanford.edu	134.79.254.65	AS3671	0.314 ms		37.4178,-122.2020	0.0 km
3	rtr-border2-p2p-core1.slac.stanford.edu	134.79.252.141	AS3671	0.706 ms		37.4178,-122.2020	0.0 km
4	slac-mr2-p2p-rtr-border1.slac.stanford.edu	192.68.191.245	AS3671	0.259 ms		37.4178,-122.2020	0.0 km
6	sacr5-ip-a-sunn5.es.net	134.55.40.5	AS293	3.750 ms		38.8948,-121.5655	173.6 km
7	den5cr5-ip-a-sacr5.es.net	134.55.50.202	AS293	24.712 ms	█	39.7444,-104.9792	1429.6 km
8	kanscr5-ip-a-den5cr5.es.net	134.55.49.58	AS293	39.732 ms	█	40.9859,-97.1059	681.8 km
9	chiccr5-ip-a-kanscr5.es.net	134.55.43.81	AS293	46.505 ms	█	42.0598,-88.5048	726.5 km
10	starcr5-ip-a-chiccr5.es.net	134.55.42.42	AS293	46.750 ms	█	42.1455,-88.4460	10.7 km
11	198.125.140.182	198.125.140.182	AS291	82.717 ms	█	41.7171,-87.6243	83.1 km
12	tengige0-1-0-5.nykr2.NewYork.opentransit.net	193.251.242.52	AS5511	71.128 ms	█	Can't geolocate	-
13	tengige0-11-0-5.nykr1.NewYork.opentransit.net	193.251.129.49	AS5511	70.209 ms	█	Can't geolocate	-
14	pos0-0-0-0.auvtr1.Aubervilliers.opentransit.net	193.251.241.137	AS5511	156.219 ms	█	Can't geolocate	-
15	xe-3-1-6.marcr3.Marseille.opentransit.net	193.251.128.241	AS5511	168.234 ms	█	48.1684,3.9571	6810.9 km
16	abitethernet5-2-2.marcr2.Marseille.opentransit.net	193.251.151.5	AS5511	166.009 ms	█	48.3831,4.1641	28.4 km
18	static-10GE-KHI275-P01-SwB.pie.net.pk	202.125.128.156	AS17557	294.940 ms	█	24.9389,67.1232	6002.1 km
19	static-10GE-KHI275-P01-SwB.pie.net.pk	221.120.251.30	AS17557	452.900 ms	█	24.8878,67.0668	8.0 km
20	static-10GE-KHI275-P01-SwB.pie.net.pk	221.120.236.190	AS17557	451.937 ms	█	33.6827,73.0545	1138.1 km
22	111.68.101.101.nust.edu.pk	111.68.101.101	AS38193	451.543 ms	█	33.6824,73.0549	0.0 km
23	111.68.101.101.nust.edu.pk	111.68.101.101	AS38193	451.999 ms	█	33.6824,73.0549	0.0 km
24	111.68.101.101.nust.edu.pk	111.68.101.101	AS38193	324.944 ms	█	33.6824,73.0549	0.0 km
25	111.68.101.101.nust.edu.pk	111.68.101.101	AS38193	452.637 ms	█	33.6824,73.0549	0.0 km
26	111.68.101.101.nust.edu.pk	111.68.101.101	AS38193	452.176 ms	█	33.6824,73.0549	0.0 km

[Visual Traceroute took : 44secs | Total Hop Distance: 17092.9 km | Total End-to-end Distance: 11967.3 km | [Directivity](#) ≈ 0,70]

Directivity=great circle distance / Sum(hop distance)