



U.S. DEPARTMENT OF
ENERGY

Office of
Science

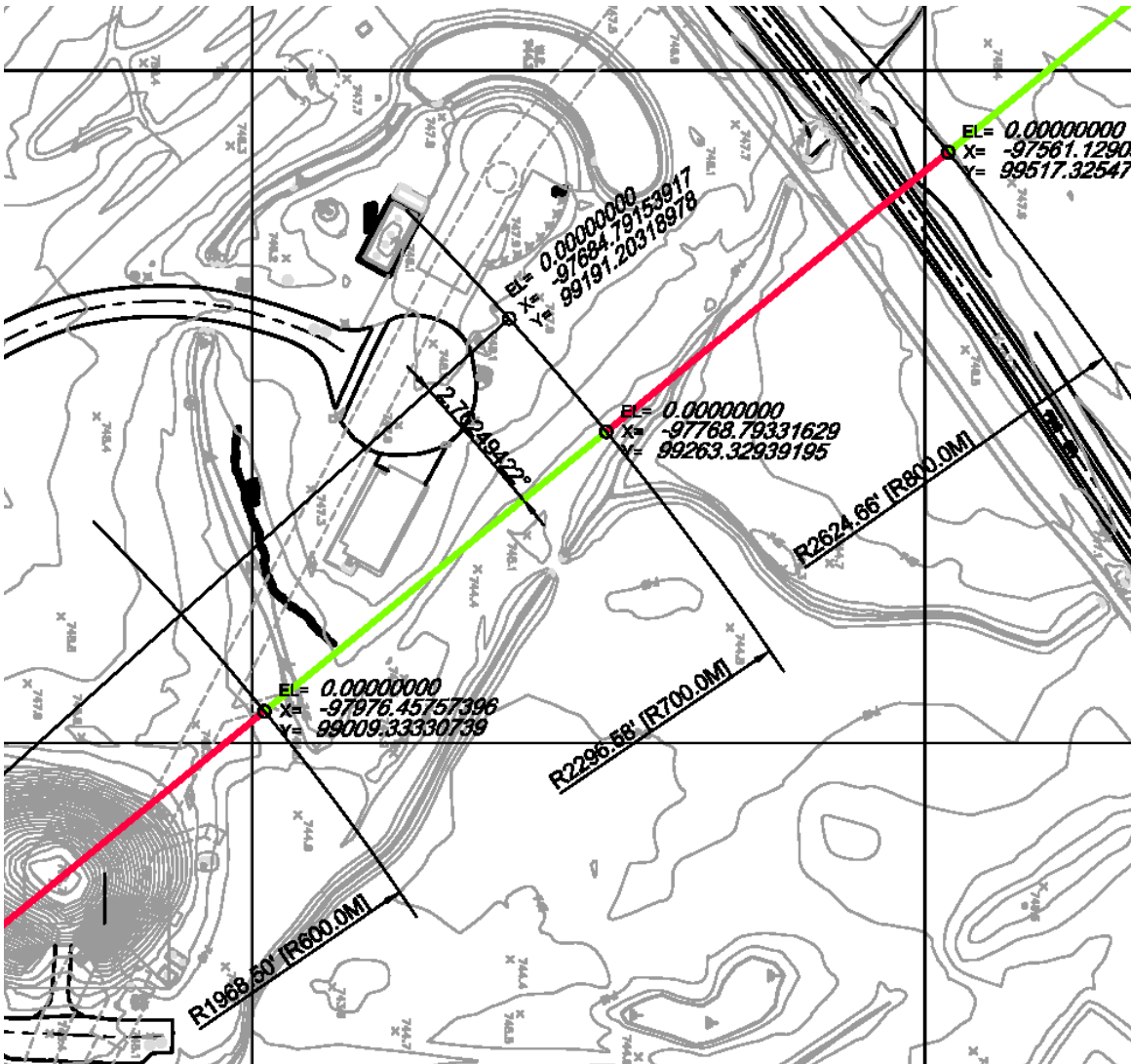
Update on Far Detector Building – 600m

Steve Dixon

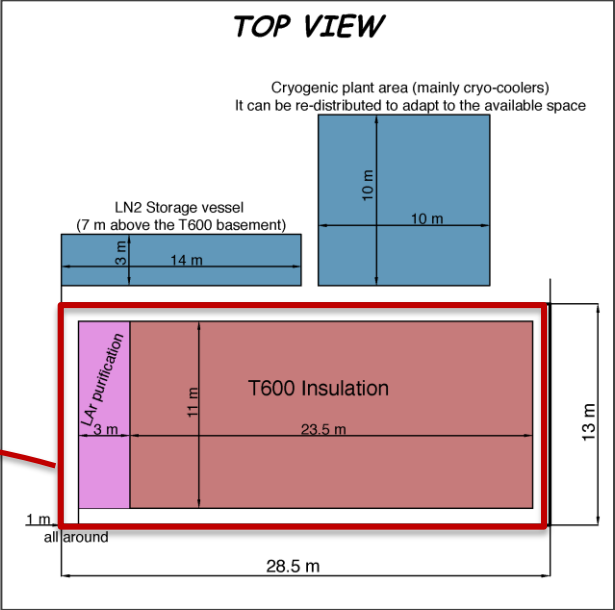
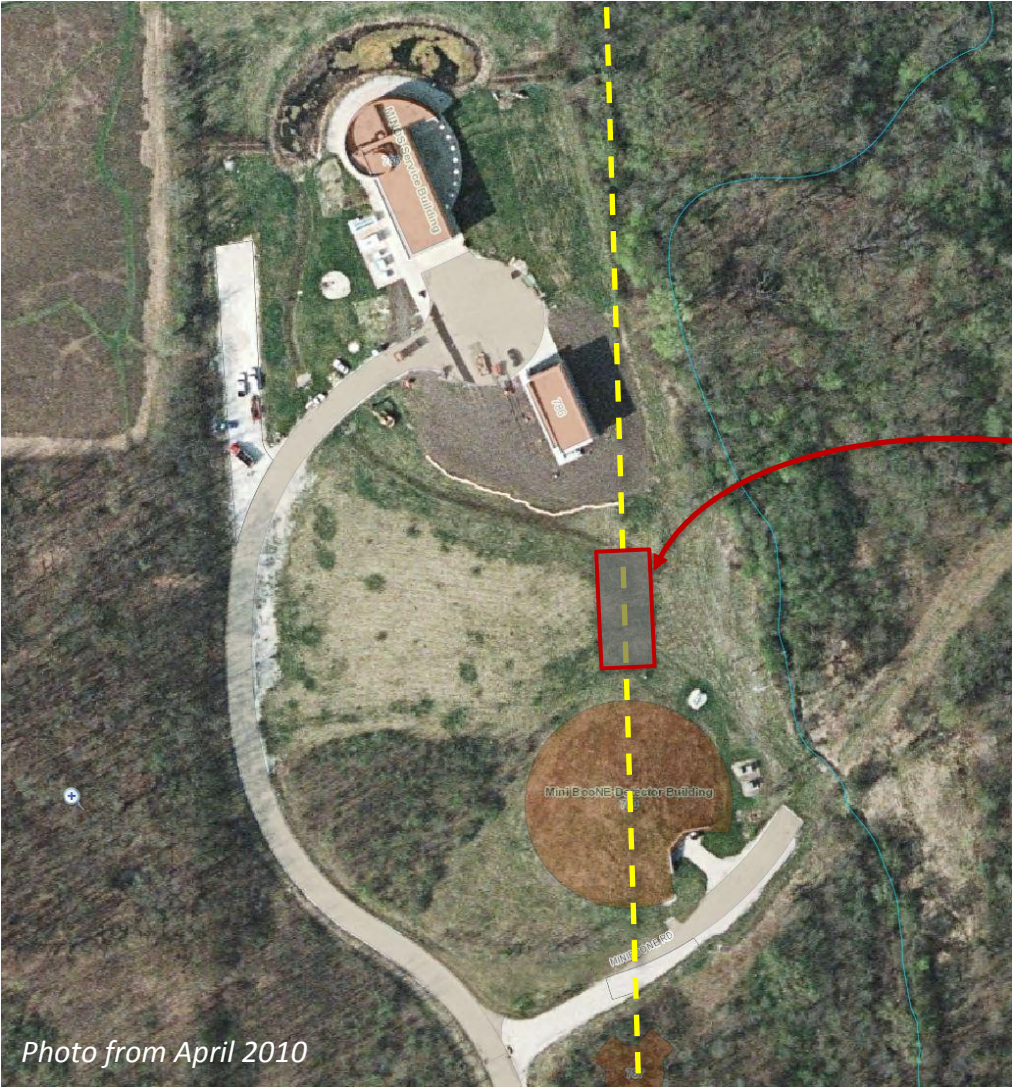
Fermilab Short-Baseline Neutrino Working Meeting

02 May 2014

Far Detector Building – 600m location



Far Detector Building – 600m location



From C. Montanari Presentation

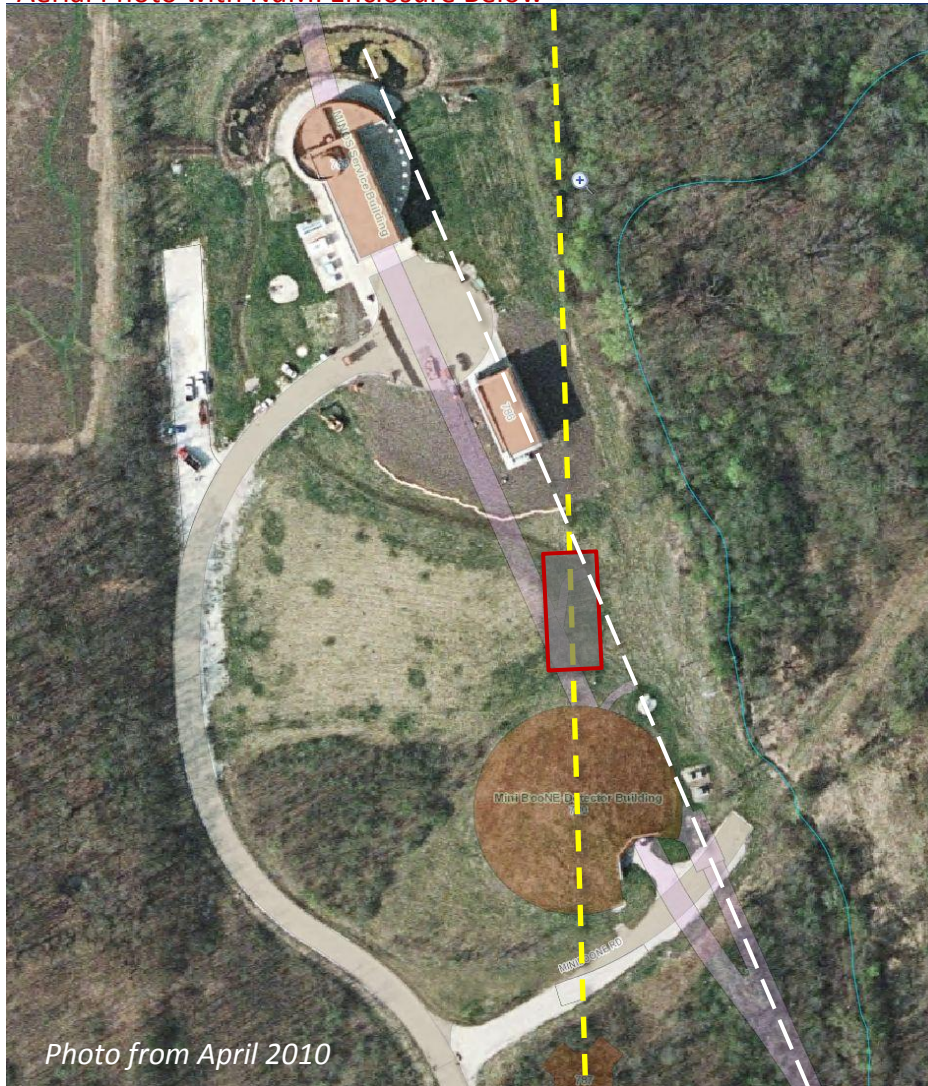


Far Detector – Previous Work

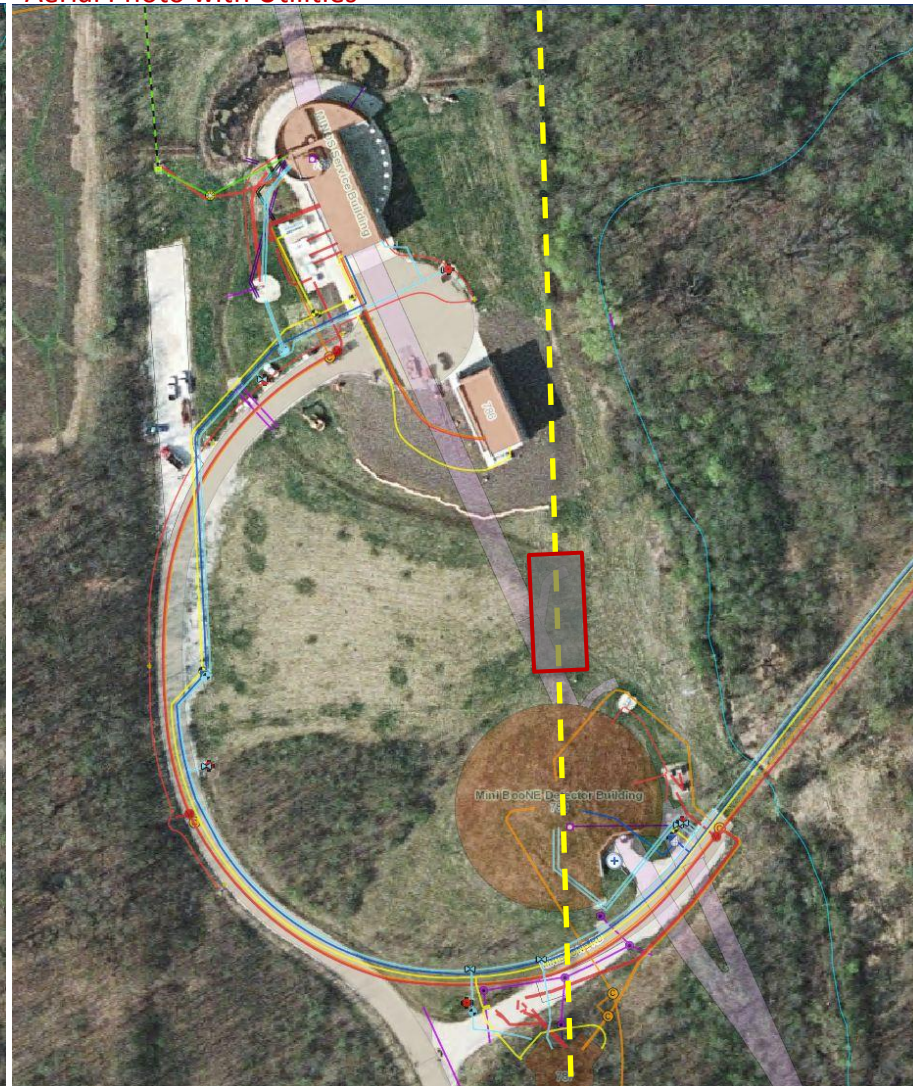


Far Detector Building – 600m location

Aerial Photo with NuMI Enclosure Below -



Aerial Photo with Utilities



Questions
