



Open Science Grid

OSG Operations and XMod Report

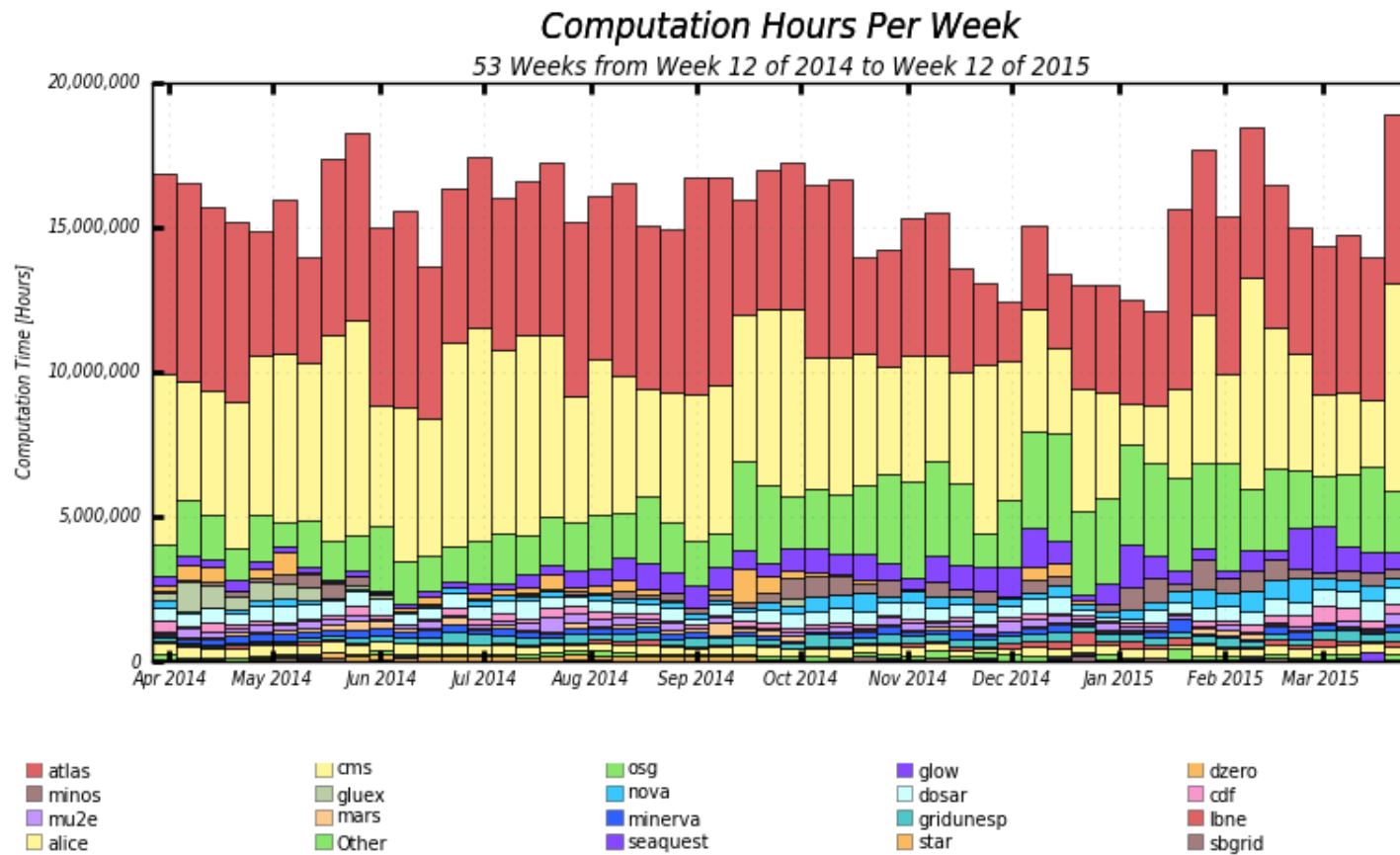


New VOs and Resources

- No New VOs
- Compute Element - Purdue
- Storage Element - SMU
- PerfSONAR – PNNL, ASGC, MSU, SPRACE, LBL, SAMPA, OU, CBPF, GT
- GridFTP – ANL
- HTCondor Collector – IU Operations
- XRootD Redirector – IU Operations
- Accounting Reporter – IU Operations

Production Activity

Job Activity



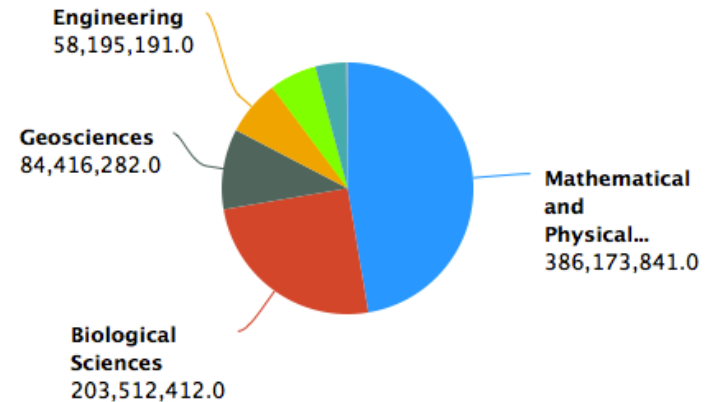
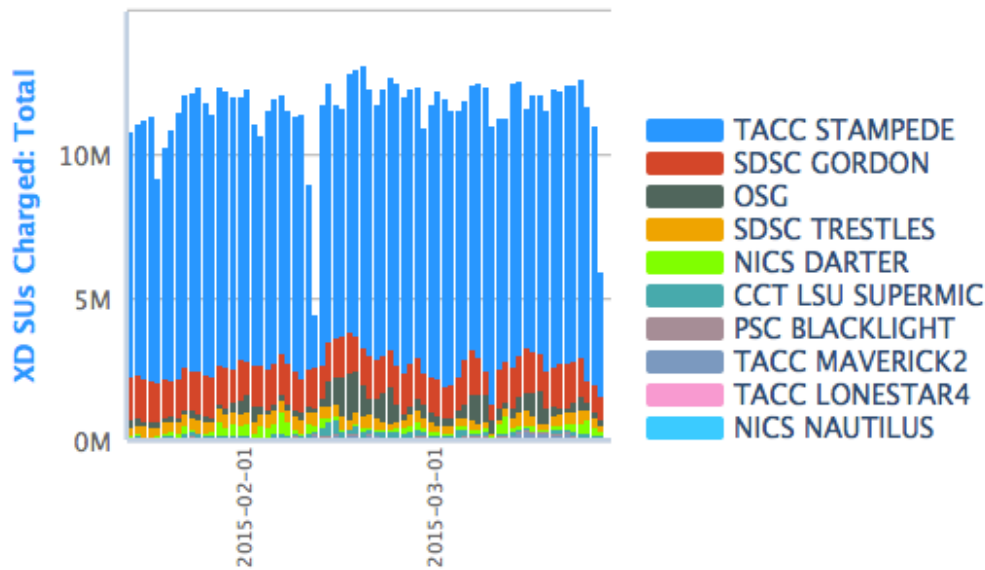
Maximum: 18,924,883 Hours, Minimum: 1,120,166 Hours, Average: 15,212,680 Hours, Current: 1,120,166 Hours

Updated OSG SU Conversion Factor in XDMod

- From previous council meeting OSG Accounting in XDMod was incorrect.
- From work done by Mats Rynge.
- The locally defined SUs (1 SU = 1 core hour) does not change. There is no effect on existing users, or the number of SUs we offer to the allocations committee.
- Test suite based on 3 common osg-xd workflows.
- Conversion factor updated from 1 to 3.147

XDMod – All of XSEDE

Activity				Jobs	
Users:	Pls:	Allocations:	Institutions:	Total:	Gateway:
2,540	1,024	1,069	414	495,954	44,444
Service (XD SU)			CPU Time (h)		
Total:		Avg (Per Job):	Total:		Avg (Per Job):
815,489,271.0		1,644.28	179,899,588.2		362.73
Wait Time (h)	Wall Time (h)		Processors		
Avg (Per Job):	Total:	Avg (Per Job):	Max:	Avg (Per Job):	
5.83	2,354,583.0	4.75	27,648	107	



XDMod – OSG

Activity				Jobs	
Users:	PIs:	Allocations:	Institutions:	Total:	Gateway:
12	10	10	12	4,277	0

Service (XD SU)		CPU Time (h)	
Total:	Avg (Per Job):	Total:	Avg (Per Job):
31,968,625.0	7,474.54	102,361.8	23.93

Wait Time (h)	Wall Time (h)		Processors	
Avg (Per Job):	Total:	Avg (Per Job):	Max:	Avg (Per Job):
0.00	102,361.8	23.93	1	1

Service Provider = OSG

