

Rare Semileptonic Charm Decays

Stefan de Boer

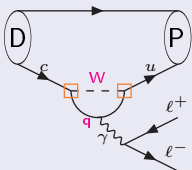
TU Dortmund

CHARM 2015, 20.05.2015



$c \rightarrow ull$

FCNC, in the SM:



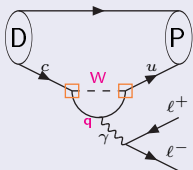
Loop-suppressed

GIM-suppressed:

$$V_{cd}V_{ud}^* + V_{cs}V_{us}^* \sim \mathcal{O}(\lambda^5) \quad \lambda \sim 0.22$$

$c \rightarrow ull$

FCNC, in the SM:



Loop-suppressed

GIM-suppressed:

$$V_{cd}V_{ud}^* + V_{cs}V_{us}^* \sim \mathcal{O}(\lambda^5) \quad \lambda \sim 0.22$$

 \rightsquigarrow Sensitive to BSM!

 Complementary to rare b and s decays.

Check for theoretical tools.

Branching Fractions

High precision experiments:

(LHCb, CMS, BaBar, Belle II, CLEO-c, BESIII, ...)

Non-resonant [LHCb 2013] :

$$\mathcal{B}(D^+ \rightarrow \pi^+ \mu^+ \mu^-) < 7.3 \times 10^{-8} \quad @CL=90\%$$

Branching Fractions

High precision experiments:

(LHCb, CMS, BaBar, Belle II, CLEO-c, BESIII, ...)

Non-resonant [LHCb 2013] :

$$\mathcal{B}(D^+ \rightarrow \pi^+ \mu^+ \mu^-) < 7.3 \times 10^{-8} \quad @\text{CL}=90\%$$

Theoretical status:

$$\mathcal{B}_{D^+ \rightarrow \pi^+ \mu \mu}^{\text{nr, SM}} = 6 \cdot 10^{-12} \quad [\text{Fajfer et al., 2005}]$$

$$\mathcal{B}_{D^+ \rightarrow \pi^+ \mu \mu}^{\text{nr, SM}} = [4.59, 8.04] \cdot 10^{-10} \quad [\text{Wang et al., 2014}]$$

Branching Fractions

Theoretical status:

$$\mathcal{B}_{D^+ \rightarrow \pi^+ \mu \mu}^{\text{nr, SM}} = 6 \cdot 10^{-12} \quad [\text{Fajfer et al., 2005}]$$

$$\mathcal{B}_{D^+ \rightarrow \pi^+ \mu \mu}^{\text{nr, SM}} = [4.59, 8.04] \cdot 10^{-10} \quad [\text{Wang et al., 2014}]$$

$$\mathcal{B}_{D^+ \rightarrow X_u^+ e e}^{\text{nr, SM}} = 2 \cdot 10^{-8} \quad [\text{Burdman et al., 2002}]$$

$$\mathcal{B}_{D^+ \rightarrow X_u^+ e e}^{\text{nr, SM}} = 6.0 \cdot 10^{-10} \quad [\text{Fajfer et al., 2002, 2005}]$$

Also: [Paul et al., 2011]

Branching Fractions

Theoretical status:

$$\mathcal{B}_{D^+ \rightarrow \pi^+ \mu \mu}^{\text{nr, SM}} = 6 \cdot 10^{-12} \quad [\text{Fajfer et al., 2005}]$$

$$\mathcal{B}_{D^+ \rightarrow \pi^+ \mu \mu}^{\text{nr, SM}} = [4.59, 8.04] \cdot 10^{-10} \quad [\text{Wang et al., 2014}]$$

$$\mathcal{B}_{D^+ \rightarrow X_u^+ e e}^{\text{nr, SM}} = 2 \cdot 10^{-8} \quad [\text{Burdman et al., 2002}]$$

$$\mathcal{B}_{D^+ \rightarrow X_u^+ e e}^{\text{nr, SM}} = 6.0 \cdot 10^{-10} \quad [\text{Fajfer et al., 2002, 2005}]$$

Also: [Paul et al., 2011]

↪ Redo calculation!

Effective Lagrangian

$$\mathcal{L}_{\text{eff}} = \mathcal{L}_{\text{QCD} \times \text{QED}}|_{\{q: m_q < \mu, \ell\}} + \mathcal{L}_{\text{eff}}^{\text{weak}} :$$

$$\begin{aligned} \mathcal{L}_{\text{eff}}^{\text{weak}}|_{\mu \sim m_W} &= \frac{4G_F}{\sqrt{2}} \sum_{q \in \{d, s, b\}} V_{cq} V_{uq}^* \\ &\times \left(C_1(\mu) Q_1^{(q)}(\mu) + C_2(\mu) Q_2^{(q)}(\mu) \right) \end{aligned}$$

$$Q_1^{(q)} = (\bar{u}_L \gamma_{\mu_1} T^a q_L) (\bar{q}_L \gamma^{\mu_1} T^a c_L),$$

$$Q_2^{(q)} = (\bar{u}_L \gamma_{\mu_1} q_L) (\bar{q}_L \gamma^{\mu_1} c_L)$$

nNLO QCD Calculation in a Nutshell

Wilson coefficients:

- $\mu \sim m_W$: Match SM onto effective theory.

[In collaboration with Dirk Seidel.]

[[hep-ph/9910220](#)], [[hep-ph/0411071](#)], [[hep-ph/0504194](#)], [[hep-ph/0612329](#)]

NLO QCD Calculation in a Nutshell

Wilson coefficients:

- $\mu \sim m_W$: Match SM onto effective theory.
- $\mu \sim m_W \rightarrow \mu \sim m_b$: Resum logarithms to all orders via Renormalization Group Equations.

[In collaboration with Dirk Seidel.]

[[hep-ph/9910220](#)], [[hep-ph/0411071](#)], [[hep-ph/0504194](#)], [[hep-ph/0612329](#)]

nNLO QCD Calculation in a Nutshell

Wilson coefficients:

- $\mu \sim m_W$: Match SM onto effective theory.
- $\mu \sim m_W \rightarrow \mu \sim m_b$: Resum logarithms to all orders via Renormalization Group Equations.
- $\mu \sim m_b$: Integrate b -quark (\rightsquigarrow additional operators

$$Q_{3-6} \sim \begin{array}{c} \begin{array}{cc} c & u \\ \diagdown & / \\ \blacksquare & \\ / & \diagdown \\ \Sigma_q & \end{array} \end{array}, \quad Q_{7,8} \sim \begin{array}{c} \begin{array}{ccc} c & \blacksquare & u \\ & | & \\ & \gamma, g & \end{array} \end{array}, \quad Q_{9,10} \sim \begin{array}{c} \begin{array}{cc} c & u \\ \diagdown & / \\ \blacksquare & \\ / & \diagdown \\ \ell & \ell \end{array} \end{array}).$$

[In collaboration with Dirk Seidel.]

[[hep-ph/9910220](https://arxiv.org/abs/hep-ph/9910220)], [[hep-ph/0411071](https://arxiv.org/abs/hep-ph/0411071)], [[hep-ph/0504194](https://arxiv.org/abs/hep-ph/0504194)], [[hep-ph/0612329](https://arxiv.org/abs/hep-ph/0612329)]

nNLO QCD Calculation in a Nutshell

Wilson coefficients:

- $\mu \sim m_W$: Match SM onto effective theory.
- $\mu \sim m_W \rightarrow \mu \sim m_b$: Resum logarithms to all orders via Renormalization Group Equations.
- $\mu \sim m_b$: Integrate b -quark (\rightsquigarrow additional operators

$$Q_{3-6} \sim \begin{array}{c} \begin{array}{cc} c & u \\ \diagdown & / \\ \blacksquare & \\ / & \diagdown \\ \Sigma_q & \end{array} \end{array}, \quad Q_{7,8} \sim \begin{array}{c} \begin{array}{ccc} & & u \\ & \blacksquare & \\ c & & \end{array} \\ \begin{array}{c} \\ \\ \gamma, g \end{array} \end{array}, \quad Q_{9,10} \sim \begin{array}{c} \begin{array}{cc} c & u \\ \diagdown & / \\ \blacksquare & \\ / & \diagdown \\ \ell & \ell \end{array} \end{array} \end{array}.$$

- $\mu \sim m_b \rightarrow \mu \sim m_c$: Scale via RGE.

[In collaboration with Dirk Seidel.]

[[hep-ph/9910220](#)], [[hep-ph/0411071](#)], [[hep-ph/0504194](#)], [[hep-ph/0612329](#)]

NLO QCD Calculation in a Nutshell

Matrix elements at $\mu \sim m_c$:

- Relate $\langle Q_{1-6,8} \rangle \sim \langle Q_{7,9,10} \rangle$ perturbatively.

[[hep-ph/9603417](#)], [[hep-ph/0306079](#)], [[arXiv:0810.4077](#)]

[[hep-ph/0008255](#)], [[arXiv:1111.2558](#)], [[arXiv:1412.7515](#)]

nNLO QCD Calculation in a Nutshell

Matrix elements at $\mu \sim m_c$:

- Relate $\langle Q_{1-6,8} \rangle \sim \langle Q_{7,9,10} \rangle$ perturbatively.
- Factorize leptonic and hadronic currents.

[[hep-ph/9603417](#)], [[hep-ph/0306079](#)], [[arXiv:0810.4077](#)]

[[hep-ph/0008255](#)], [[arXiv:1111.2558](#)], [[arXiv:1412.7515](#)]

NNLO QCD Calculation in a Nutshell

Matrix elements at $\mu \sim m_c$:

- Relate $\langle Q_{1-6,8} \rangle \sim \langle Q_{7,9,10} \rangle$ perturbatively.
- Factorize leptonic and hadronic currents.
- Parametrize hadronic $\langle Q_{7,9,10} \rangle$ via form factors.

[[hep-ph/9603417](#)], [[hep-ph/0306079](#)], [[arXiv:0810.4077](#)]

[[hep-ph/0008255](#)], [[arXiv:1111.2558](#)], [[arXiv:1412.7515](#)]

nNLO QCD Calculation in a Nutshell

Matrix elements at $\mu \sim m_c$:

- Relate $\langle Q_{1-6,8} \rangle \sim \langle Q_{7,9,10} \rangle$ perturbatively.
- Factorize leptonic and hadronic currents.
- Parametrize hadronic $\langle Q_{7,9,10} \rangle$ via form factors.
- Relate form factors within heavy quark effective theory.

[[hep-ph/9603417](#)], [[hep-ph/0306079](#)], [[arXiv:0810.4077](#)]

[[hep-ph/0008255](#)], [[arXiv:1111.2558](#)], [[arXiv:1412.7515](#)]

nNLO QCD Calculation in a Nutshell

Matrix elements at $\mu \sim m_c$:

- Relate $\langle Q_{1-6,8} \rangle \sim \langle Q_{7,9,10} \rangle$ perturbatively.
- Factorize leptonic and hadronic currents.
- Parametrize hadronic $\langle Q_{7,9,10} \rangle$ via form factors.
- Relate form factors within heavy quark effective theory.
- Parametrize form factor (f_+) via z-expansion (parameters fitted via $D \rightarrow \pi \ell \nu_\ell$).

[[hep-ph/9603417](#)], [[hep-ph/0306079](#)], [[arXiv:0810.4077](#)]

[[hep-ph/0008255](#)], [[arXiv:1111.2558](#)], [[arXiv:1412.7515](#)]

Branching Fractions

Ours (preliminary) :

$$\mathcal{B}_{D^+ \rightarrow X_u^+ ee}^{\text{nr,SM}} \approx 1 \cdot 10^{-9}, \quad \mathcal{B}_{D^+ \rightarrow X_u^+ \mu\mu}^{\text{nr,SM}} \approx 2 \cdot 10^{-10}$$

$$\mathcal{B}_{D^+ \rightarrow \pi^+ \ell\ell}^{\text{nr,SM}} \approx 4 \cdot 10^{-12} \quad \ell \in \{e, \mu\}$$

Branching Fractions

Ours (preliminary) :

$$\mathcal{B}_{D^+ \rightarrow X_u^+ ee}^{\text{nr,SM}} \approx 1 \cdot 10^{-9}, \quad \mathcal{B}_{D^+ \rightarrow X_u^+ \mu\mu}^{\text{nr,SM}} \approx 2 \cdot 10^{-10}$$

$$\mathcal{B}_{D^+ \rightarrow \pi^+ \ell\ell}^{\text{nr,SM}} \approx 4 \cdot 10^{-12} \quad \ell \in \{e, \mu\}$$

Consistent with Fajfer et al.

Branching Fractions

Ours (preliminary) :

$$\mathcal{B}_{D^+ \rightarrow X_u^+ ee}^{\text{nr,SM}} \approx 1 \cdot 10^{-9}, \quad \mathcal{B}_{D^+ \rightarrow X_u^+ \mu\mu}^{\text{nr,SM}} \approx 2 \cdot 10^{-10}$$

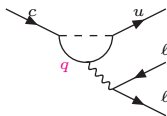
$$\mathcal{B}_{D^+ \rightarrow \pi^+ \ell\ell}^{\text{nr,SM}} \approx 4 \cdot 10^{-12} \quad \ell \in \{e, \mu\}$$

Consistent with Fajfer et al.

Burdman et al. and Wang et al.:

$$C_9(\mu_W) = \sum_q V_{cq} V_{uq}^* C_{9,1L}^{(q)} \approx -0.29$$

$$C_{9,1L}^{(q)} \sim$$



Branching Fractions

Ours (preliminary) :

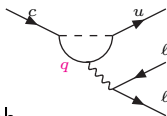
$$\mathcal{B}_{D^+ \rightarrow X_u^+ ee}^{\text{nr,SM}} \approx 1 \cdot 10^{-9}, \quad \mathcal{B}_{D^+ \rightarrow X_u^+ \mu\mu}^{\text{nr,SM}} \approx 2 \cdot 10^{-10}$$

$$\mathcal{B}_{D^+ \rightarrow \pi^+ \ell\ell}^{\text{nr,SM}} \approx 4 \cdot 10^{-12} \quad \ell \in \{e, \mu\}$$

Consistent with Fajfer et al.

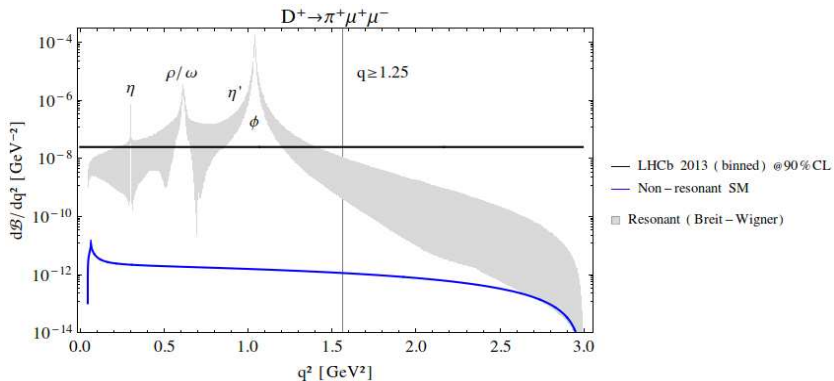
Burdman et al. and Wang et al.:

$$C_9(\mu_W) = \sum_q V_{cq} V_{uq}^* C_{9,1L}^{(q)} \approx -0.29 \quad C_{9,1L}^{(q)} \sim$$

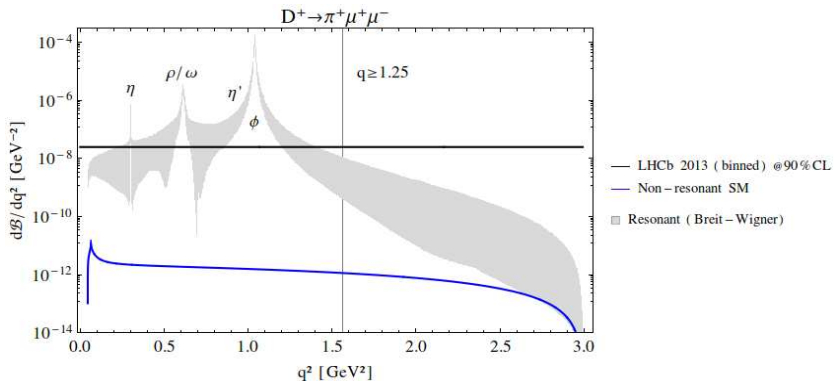


\rightsquigarrow Not consistent within effective theory approach.

Decay Distribution (preliminary)



Decay Distribution (preliminary)



Ours:

$$\mathcal{B}_{D^+ \rightarrow \pi^+ \mu^+ \mu^-}^{\text{nr, SM}} \Big|_{q \geq 1.25 \text{ GeV}} \approx 7.5 \cdot 10^{-13} \begin{matrix} +15\% \\ -14\% \end{matrix} (\bar{m}_s) \begin{matrix} +138\% \\ -46\% \end{matrix} (\mu_c) \begin{matrix} +27\% \\ -20\% \end{matrix} (f_+)$$

BSM: Leptoquarks

Scalar (3,3,-1/3) leptoquark: $\lambda_{S_3} (\mathbf{Q}_L^T i\tau_2 \vec{\tau} \mathbf{L}_L) \cdot \vec{S}_3^\dagger \in \mathcal{L}_{LQ}$

Vector (3,1,-5/3) leptoquark: $\lambda_{\tilde{V}_1} \bar{q}_R \gamma_\mu \ell_R (\tilde{V}_1^\mu)^\dagger \in \mathcal{L}_{LQ}$

BSM: Leptoquarks

Scalar (3,3,-1/3) leptoquark: $\lambda_{S_3} (\mathbf{Q}_L^T i\tau_2 \vec{\tau} \mathbf{L}_L) \cdot \vec{S}_3^\dagger \subset \mathcal{L}_{LQ}$

Vector (3,1,-5/3) leptoquark: $\lambda_{\tilde{V}_1} \bar{q}_R \gamma_\mu \ell_R (\tilde{V}_1^\mu)^\dagger \subset \mathcal{L}_{LQ}$

Constrain masses via collider experiments: $M \gtrsim 1 \text{ TeV}$

Constrain couplings via $\mathcal{B}(D^+ \rightarrow \pi^+ e^\pm \mu^\mp)$, $\mathcal{B}(D^0 \rightarrow \mu^+ \mu^-)$,
 $\mathcal{B}(D^0 \rightarrow \mu^\pm e^\mp)$, x_D , y_D , atomic parity violation ...

BSM: Leptoquarks

Scalar (3,3,-1/3) leptoquark: $\lambda_{S_3} (\mathbf{Q}_L^T i\tau_2 \vec{\tau} \mathbf{L}_L) \cdot \vec{S}_3^\dagger \subset \mathcal{L}_{LQ}$

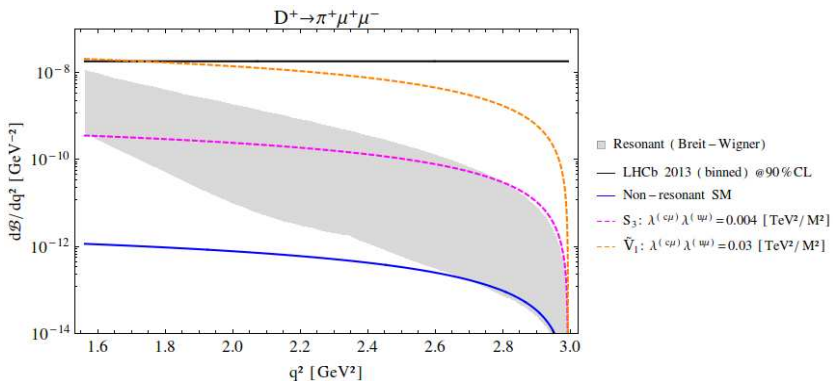
Vector (3,1,-5/3) leptoquark: $\lambda_{\tilde{V}_1} \bar{q}_R \gamma_\mu \ell_R (\tilde{V}_1^\mu)^\dagger \subset \mathcal{L}_{LQ}$

Constrain masses via collider experiments: $M \gtrsim 1 \text{ TeV}$

Constrain couplings via $\mathcal{B}(D^+ \rightarrow \pi^+ e^\pm \mu^\mp)$, $\mathcal{B}(D^0 \rightarrow \mu^+ \mu^-)$,
 $\mathcal{B}(D^0 \rightarrow \mu^\pm e^\mp)$, x_D , y_D , atomic parity violation ...

Apply hierarchical flavor pattern for S_3 [de Medeiros Varzielas and Hiller, 2015] .

BSM: Leptoquarks (preliminary)



$$\mathcal{B}_{D^+ \rightarrow \pi^+ \mu^+ \mu^-}^{S_3} |_{q \geq 1.25 \text{ GeV}} \approx 2.4 \cdot 10^{-10}$$

$$\mathcal{B}_{D^+ \rightarrow \pi^+ \mu^+ \mu^-}^{\tilde{V}_1} |_{q \geq 1.25 \text{ GeV}} \approx 1.4 \cdot 10^{-8}$$

Conclusion

$$\mathcal{B}^{\text{nr,exp}}(D^+ \rightarrow \pi^+ \mu^+ \mu^-) \lesssim 10^{-8}$$

$$\mathcal{B}_{D^+ \rightarrow \pi^+ \mu \mu}^{\text{nr,SM}} \sim 10^{-12}$$

↪ Any signal is BSM physics!? Sensitivity to leptoquarks!?

Conclusion

$$\mathcal{B}^{\text{nr,exp}}(D^+ \rightarrow \pi^+ \mu^+ \mu^-) \lesssim 10^{-8}$$

$$\mathcal{B}_{D^+ \rightarrow \pi^+ \mu \mu}^{\text{nr,SM}} \sim 10^{-12}$$

↪ Any signal is BSM physics!? Sensitivity to leptoquarks!?

Outlook

- Extend this study.
- $D \rightarrow \rho ll$, $\Lambda_c \rightarrow p ll$, ...
- Look forward to experiments :)
- Let me know of your ideas!

Effective Lagrangian

$$\mathcal{L}_{\text{eff}} = \mathcal{L}_{\text{QCD} \times \text{QED}}|_{\{q:m_q < \mu, \ell\}} + \mathcal{L}_{\text{eff}}^{\text{weak}}$$

$$\mathcal{L}_{\text{eff}}^{\text{weak}}|_{m_W \geq \mu > m_b} = \frac{4G_F}{\sqrt{2}} \sum_{q \in \{d, s, b\}} V_{cq} V_{uq}^* \\ \times \left(C_1(\mu) Q_1^{(q)}(\mu) + C_2(\mu) Q_2^{(q)}(\mu) \right)$$

$$\mathcal{L}_{\text{eff}}^{\text{weak}}|_{m_b > \mu \geq m_c} = \frac{4G_F}{\sqrt{2}} \sum_{q \in \{d, s\}} V_{cq} V_{uq}^* \\ \times \left(C_1(\mu) Q_1^{(q)}(\mu) + C_2(\mu) Q_2^{(q)}(\mu) - \sum_{i=3}^{10} C_i(\mu) Q_i(\mu) \right)$$

SM dim 6 Operator Basis

$$Q_{1,2}^{(q)} = (\bar{u}_L \gamma_{\mu_1} T^a q_L) (\bar{q}_L \gamma^{\mu_1} T^a c_L)$$

$$Q_{3,4} = (\bar{u}_L \gamma_{\mu_1} T^a c_L) \sum_{\{q: m_q < \mu\}} (\bar{q} \gamma^{\mu_1} T^a q)$$

$$Q_{5,6} = (\bar{u}_L \gamma_{\mu_1} \gamma_{\mu_2} \gamma_{\mu_3} T^a c_L) \sum_{\{q: m_q < \mu\}} (\bar{q} \gamma^{\mu_1} \gamma^{\mu_2} \gamma^{\mu_3} T^a q)$$

$$Q_7 = \frac{e}{g^2} m_c (\bar{u}_L \sigma^{\mu_1 \mu_2} c_R) F_{\mu_1 \mu_2}$$

$$Q_8 = \frac{1}{g} m_c (\bar{u}_L \sigma^{\mu_1 \mu_2} T^a c_R) G_{\mu_1 \mu_2}^a$$

$$Q_{9,10} = \frac{e^2}{g^2} (\bar{u}_L \gamma_{\mu_1} c_L) (\bar{\ell} \gamma^{\mu_1} \gamma_5 \ell)$$

Branching Fraction

Theoretical status:

$$\mathcal{B}_{D^+ \rightarrow \pi^+ \mu \mu}^{\text{nr, SM}} |_{q \geq 1.25 \text{ GeV}} = [1.18, 2.08] \cdot 10^{-10} \quad [\text{Wang et al., 2014}]$$

No scale uncertainties.

S_3 Flavor Pattern

[de Medeiros Varzielas and Hiller, 2015] :

$$\lambda^{[\rho\kappa]} \sim \lambda_0 \begin{pmatrix} \rho_d \kappa & \rho_d & \rho_d \\ \rho \kappa & \rho & \rho \\ \kappa & 1 & 1 \end{pmatrix}$$

$$\rho_d \lesssim 0.02, \quad \kappa \lesssim 0.5, \quad 10^{-4} \lesssim \rho \lesssim 1, \quad \kappa/\rho \lesssim 0.5, \quad \rho_d/\rho \lesssim 1.6$$

$|\lambda_0^2 \rho \rho_d|$ constraint via rare Kaon decay and $|\lambda_0^2 \rho| |1 - \kappa^2|$ fixed by means of R_K .