

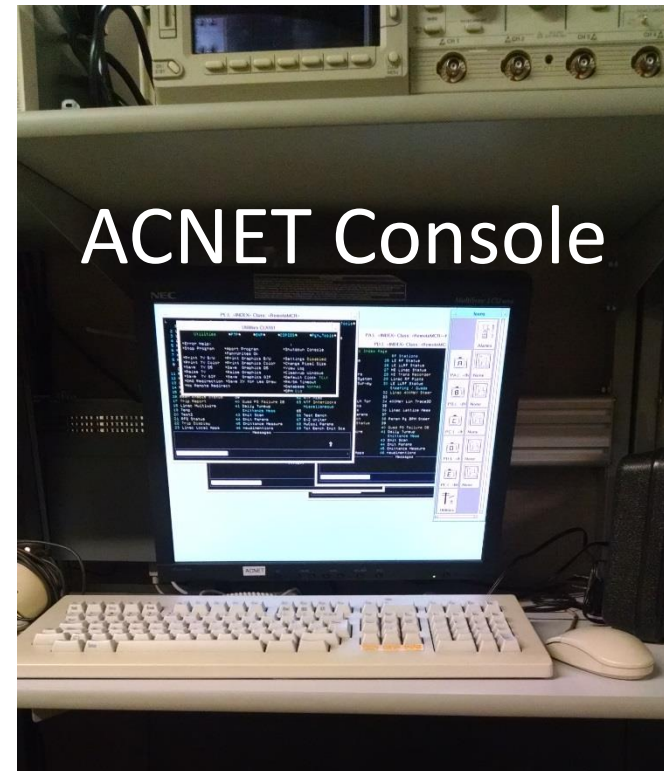
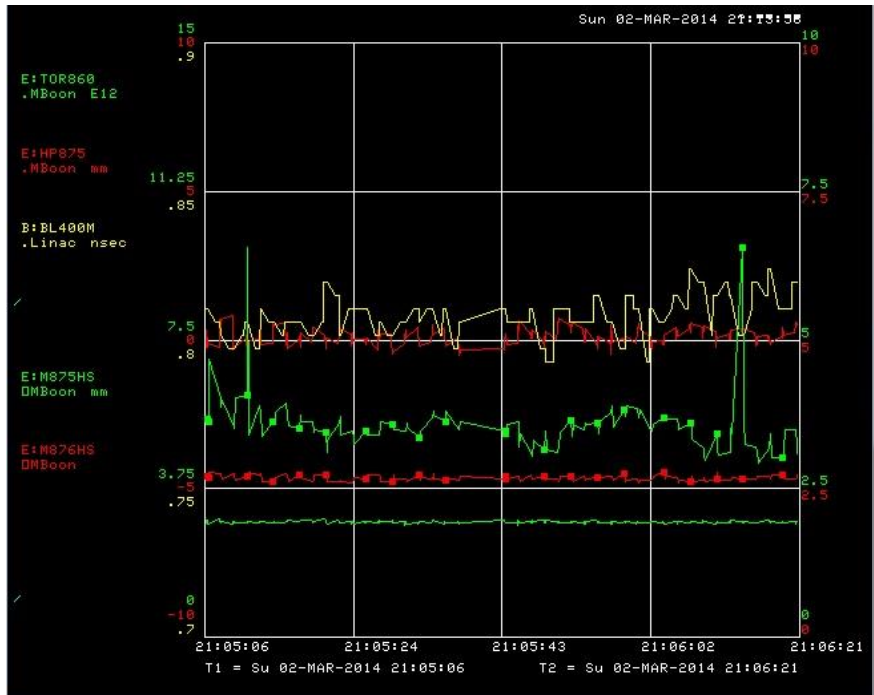
Become an Acnet Expert in Just 10 minutes

per day for 3 years

By: Michael Backfish

ACNET is What We Use to Control Fermilab Accelerators and Systems

1. Launch a Java console: <https://www-ad.fnal.gov/controls/public/linux-console.html>
2. Use the Acnet Console in the MTA control Room
3. With a Kerberos account then you can launch an Acnet console on other MTA computers



Password Information
Will Be Discussed At
Shifter Training

Disable Settings if In MTA Control Room

Some Acnet consoles have settings privileges.

Click Where it says Enabled which will Bring up A dialog box. Click on Disable to Disable the Settings privileges of the console. This allows One to use Acnet for monitoring without the danger of changing accelerator parameters.

Click on the Utilities Window Icon

```
Utilities      *FTP*      *SNP*      *COPIES*      *Pgm_Tools*
*Error Help<
*Stop Program
*Print TV B/W
*Print TV Color
*Save TV D5
*Raise TV
*Save TV GIF
*DAQ Redirection
*No Remote Redirect
*Abort Program
*FshrWrites Ok
*Print Graphics B/W
*Print Graphics Color
*Save Graphics D5
*Raise Graphics
*Save Graphics GIF
*Save XV for Lex Draw
*Shutdown Console
Off in 10 minutes
*Settings Enabled
Unlock
Disable
10 Minutes
1 Hour
TCLK
*Database Normal
*DPM Old
```

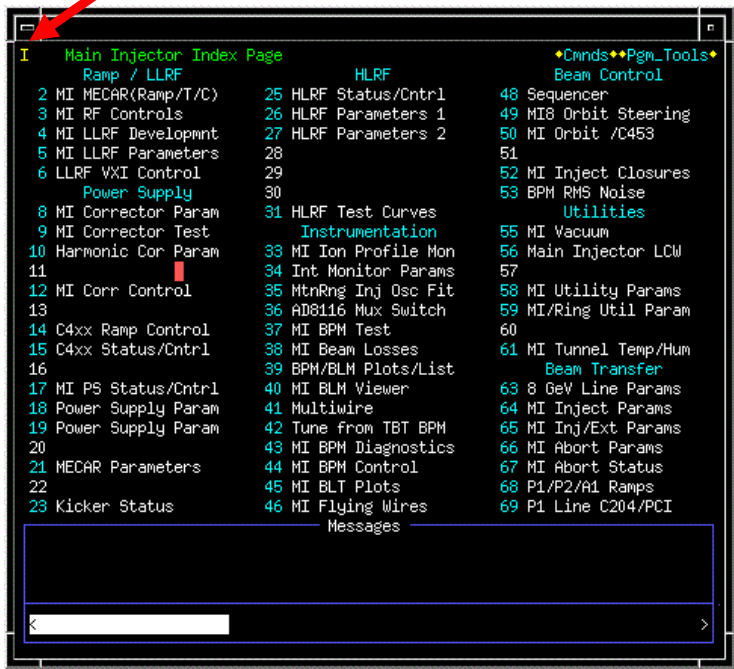
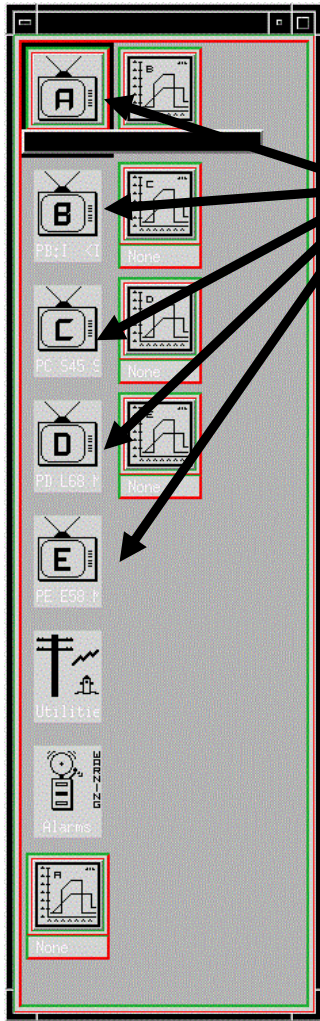
Opening A Parameter Page

Parameter Pages like L68 shown below are used to store and display Acnet parameters. Note the Subpage And SubMenu. This is L68 Vacuum <7>

1 From Icon Box DOUBLE Click On One of These PA's

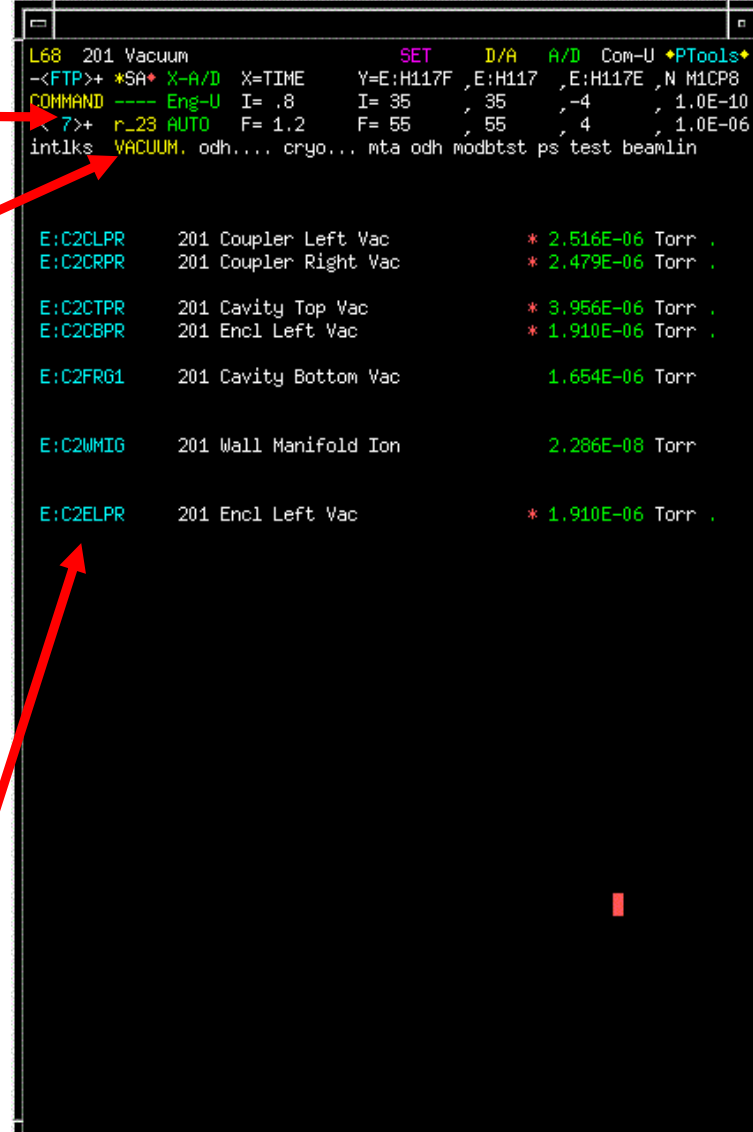
2 This Brings Up An Index Page such as the one shown below

3 Type L68 into upper left corner of index page and hit enter



Subpage 7

SubMenu

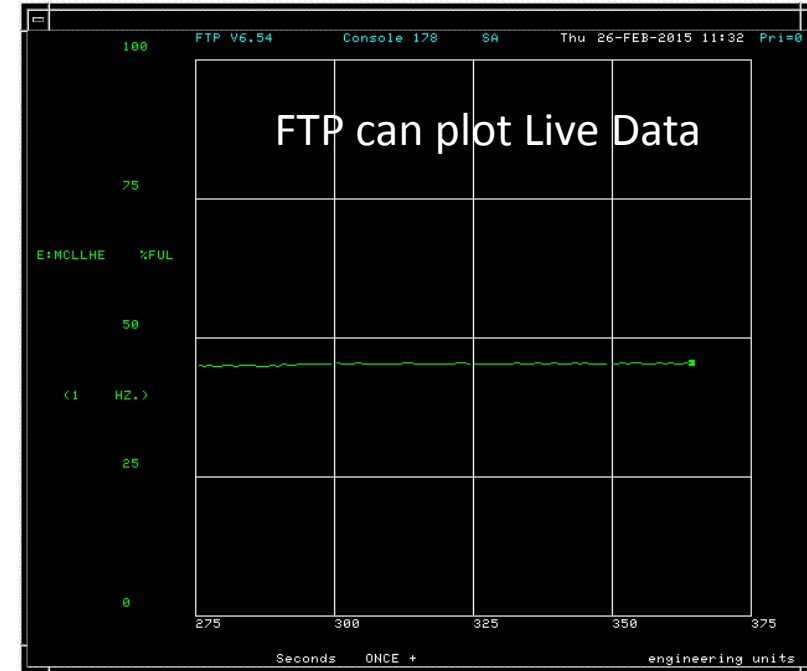


Type Desired Parameters in left portion of parameter Page field and hit enter to Display another parameter

How To Plot Live Data (Fast Time Plot)

1 Click on the Utilities Window Icon

2 Click On FTP



How long to plot before it overwrites

Click and select Once+

Parameter and Range to Plot

3 Click in this field to Launch the Plot

```
Fast Time Plot
*SA X-A/D X=TIME Y=E:MCLLHE ,R HP100 ,R HP102 ,R HP104
-- Eng-U I= 0 I= 0 , -4 , -30 , -2
One+ AUTO F= 100 F= 100 , 4 , -20 , 5
*Save *Restore Return
*Print TV B/W *Print Graphics B/W *Settings Disabled
*Print TV Color *Print Graphics Color *Change Pixel Size
*Save TV D5 *Save Graphics D5 *View Log
*Raise TV *Raise Graphics *Clean-up Windows
*Save TV GIF *Save Graphics GIF *Default Clock TCLK
*DAQ Redirection *Save XV for Lex Draw *PA/SA Timeout
*No Remote Redirect *Database Normal
*DPM Old
```

How To Use D44 Lumberjack Datalogger

This program requires lots of bashing of your head against the desk in front of you, so make sure anything fragile is placed safely to the side.

From Index Page (or any page) type D44 in top left corner and hit enter to bring up The page shown here

1. Move Cursor to Gray edge to select program without making it do anything
2. Move cursor without clicking so the field where the G is is highlighted
3. Type in G:OUTTMP without clicking
4. Without clicking move the cursor to I= and type the lower limit. Do not click
5. Move cursor to F= field and type the upper limit
6. Now Click in either the field where the parameters or numbers is. This will launch your plot
7. You will be prompted to choose the source of your data

```
D44 Lumberjack Datalogger
Plot Title =
Graphics Stop Pause Pgn
GxP2 Units Sta
X=TIME Y=G:OUTTMP E 201VAC F NS2LCW F NS2LCW
I=-15 9.7E-11 -10 -10
F= 30 1.0E+00 10 10
.MCR MTA ΔFixTr .FixTr
No Fit No Fit No Fit No Fit
Params Params Params Params
69 69
Y=G OUTTMP F NM3S F NS2SUP F NS2RET
I=-17.52 -10 -10 -10
F= 89.13 10 10 10
MCR FixTr FixTr FixTr
No Fit No Fit No Fit No Fit
Params Params Params Params
T1=Tu 17-FEB-2015 02:38:42 T2=Tu 17-FEB-2015 14:38:42 Dec T2 Now Int
Skip X Divs 4 Size D Expr. Interpolate Integrate Edt
Trace Y Divs 4 Name S Average Fof
Symbol Overwrite Previous Next StdDev LJf
Dot Group SDA FTP User Recall Save Fit Equations Pre
Data Source MTA (DCE43) List Data Copy Min/Max
All Device Plot List = 1 Export Data Enable Calc Points
Messages
CNS 213,95.20% loss of data: 1438 points expected for G:OUTTMP
CNS 213, user=Fish, record # 33 - saved
CNS 213,95.20% loss of data: 1438 points expected for G:OUTTMP
```

T1 and T2 are start and Stop Times For Logged Data You can set them manually. After typing the text will be red. You must then click on it and it will turn Green

Click on T2 Now to set T2 to current Time

Click on Interval To select Time interval from a Menu

For Questions Concerning Acnet contact either Michael Backfish or stop by your friendly Main Control Room.

The MCR is staffed by a well trained highly elite force of Acnet Ninjas who someday hope for Acnet programmers to be properly recognized as the Cultural Icons they really Are.