



Managed by Fermi Research Alliance, LLC for the U.S. Department of Energy Office of Science

NEPA STRATEGY

Victor Kuchler

DOE Independent Project Review of PIP-II

16 June 2015

OVERVIEW

- Current Status of PIP-II NEPA Efforts at Fermilab
- NEPA Compliance Process
- Identification of Needed Personnel Resources
- Preliminary Schedule
- Near-Term Planning and Conclusions

CURRENT STATUS

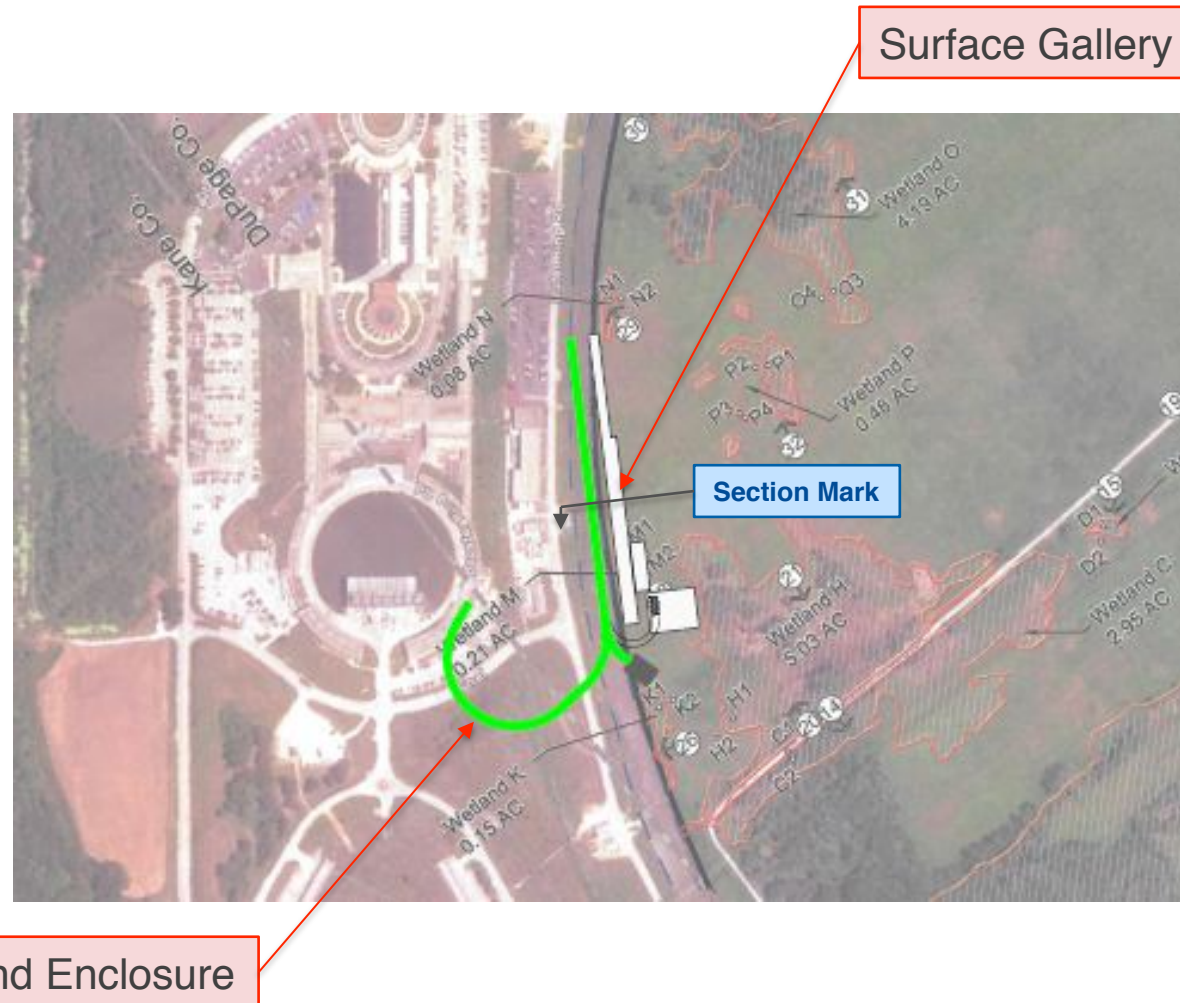
- In-House Personnel have been Identified
 - V Kuchler
 - S Dixon, R Walton, J Hunt (Facilities Engineering Services Section)
 - T Dykhuis (ESH&Q Section)
 - R Hersemann (DOE Fermilab Site Office)
- There is Opportunity to Benefit from the On-Going NEPA Effort for Fermilab LBNF Project
- An Existing Wetland Delineation Report is Available for Preliminary Planning but it will have to be Updated
- A Schedule has been Developed Anticipating a Completion of the NEPA Process in Advance of CD-2

CURRENT STATUS cont.

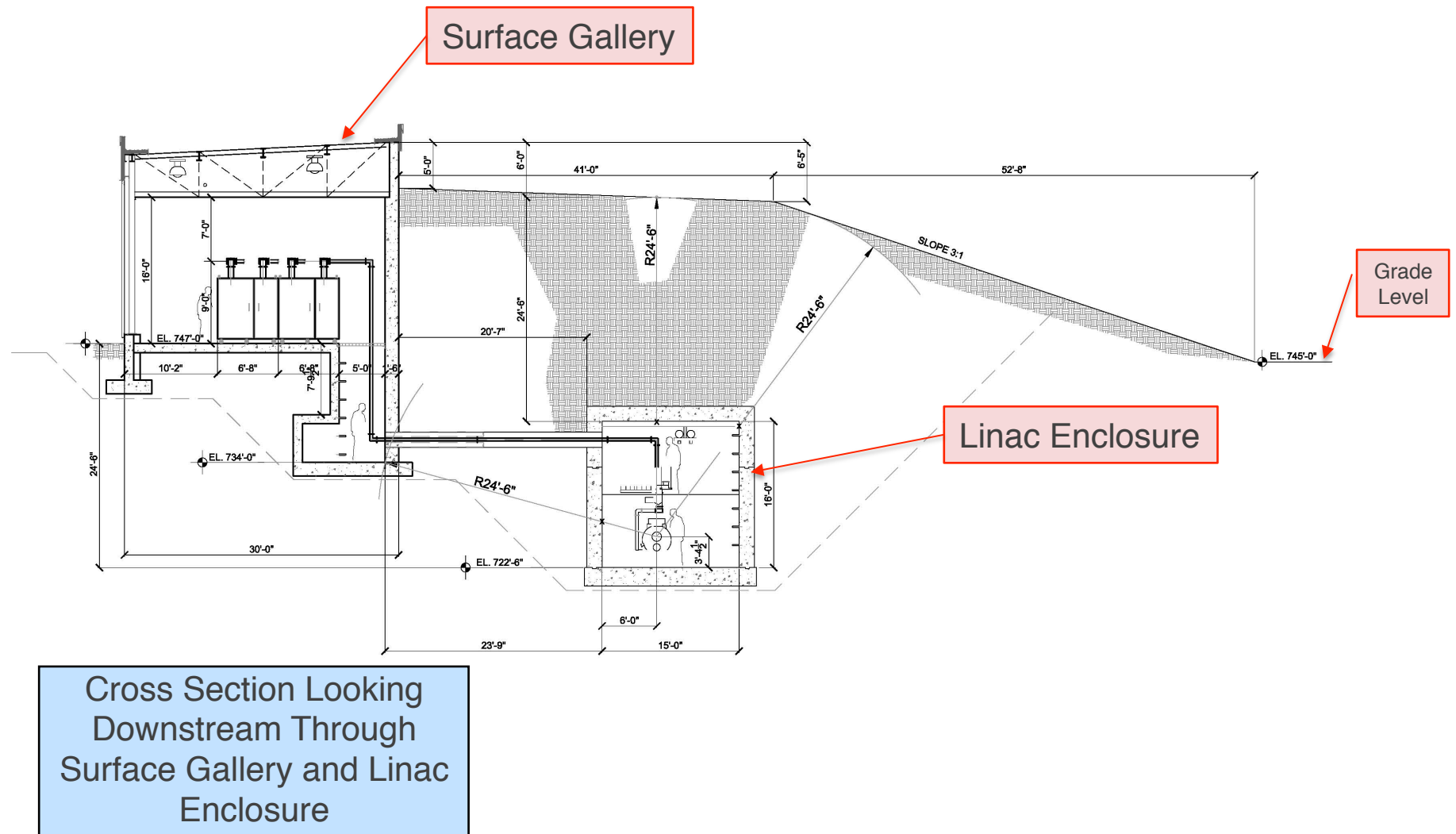
- As We Move Forward, We will Assess and Incorporate All Associated Upgrades into the Overall NEPA Process
- Initial Work with Overall Project Location and Alignment is Underway to Minimize the Environmental Impact of the Project
- Environmental Evaluation Notification Form (EENF) will be Developed and Submitted to the DOE Fermilab Site Office
 - Based on the Existing PIP-II Parameter Set, we Expect an Environmental Assessment (EA) will be Required for Compliance with the Requirements of the NEPA Implementation Process and Result in a Finding of No Significant Impact (FONSI)

Current Status cont.

PIP-II Site Plan
Overlay on Aerial
View from
Existing Wetland
Delineation
Report



Current Status cont.



NEPA COMPLIANCE PROCESS

- Using Existing PIP-II White Paper and Mission Need Statement, Develop Environmental Evaluation Notification Form (EENF) and Submit to DOE Area Office
- Continue Site Specific Design to Minimize Environmental Impact and Required Wetland Mitigation
 - Current Estimates are ½ Acre of Impacted Wetlands Requiring 3 Acres of Mitigation
- Update Existing Wetland Delineation Report
- Develop Application for Permit from the US Corps of Engineers incl:
 - Complete Wetland Mitigation Plan
 - US Natural Resource Conservation Service (NRCS) Compliance
 - State of Illinois Department of Natural Resources (IDNR) Approval
 - State of Illinois Environmental Protection Agency (IEPA) Approval
 - US Fish and Wildlife Service Review/Permit
- Develop Environmental Assessment (EA)
- Department of Energy Determination
- US Corps of Engineers Permit Issued

IDENTIFICATION OF NEEDED PERSONNEL RESOURCES

- Mission Need Statement
 - In-House Personnel
- Environmental Evaluation Notification Form (EENF)
 - In-House Personnel with DOE Area Office
- Site Design
 - In-House Personnel with Outside Consultant
- Wetland Delineation
 - In-House Personnel with Outside Consultant
- Application of Corps of Engineers Permit
 - In-House Personnel with Outside Consultant
- Wetland Mitigation Plan
 - In-House Personnel with Outside Consultant
- Development of Environmental Assessment (EA)
 - In-House Personnel with Outside Consultant

PRELIMINARY SCHEDULE

PIP-II NEPA Compliance Process Schedule v1, 29 May 2015													
				DOE CD-0 Review							DOE Determination		
TASK	Resource												
			FY 2015			FY 2016				FY 2017			
			Q2	Q3	Q4	Q1	Q2	Q3	Q4	Q1	Q2	Q3	Q4
Mission Need Statement	In-House												
Environmental Evaluation Notification Form (EENF)	In-House and DOE Area Office												
Site Design and Continued NEPA Support	In-House and Consultant												
Wetland Delineation	In-House and Consultant												
Application for Permit from the Corps of Engineers	In-House and Consultant												
Wetland Mitigation	In-House and Consultant												
Development of the Environmental Assessment (EA)	In-House and Consultant												

NEAR TERM PLANNING AND CONCLUSIONS

- The Team for the Implementation of the NEPA Compliance Process is in Place
- Preliminary Site Design, Work on the EENF and Wetland Delineation will Continue
- Several Competent Outside Consultants have been Identified that are Familiar with the Fermilab Site
- Experience with the LBNF NEPA Effort will Provide added Guidance
- Project Funding Profile will Guide the Overall Effort for the NEPA Compliance Process
- A Plan is in Place and We are Ready to Proceed