

# Gratia Stakeholder Report for HCC

David Swanson

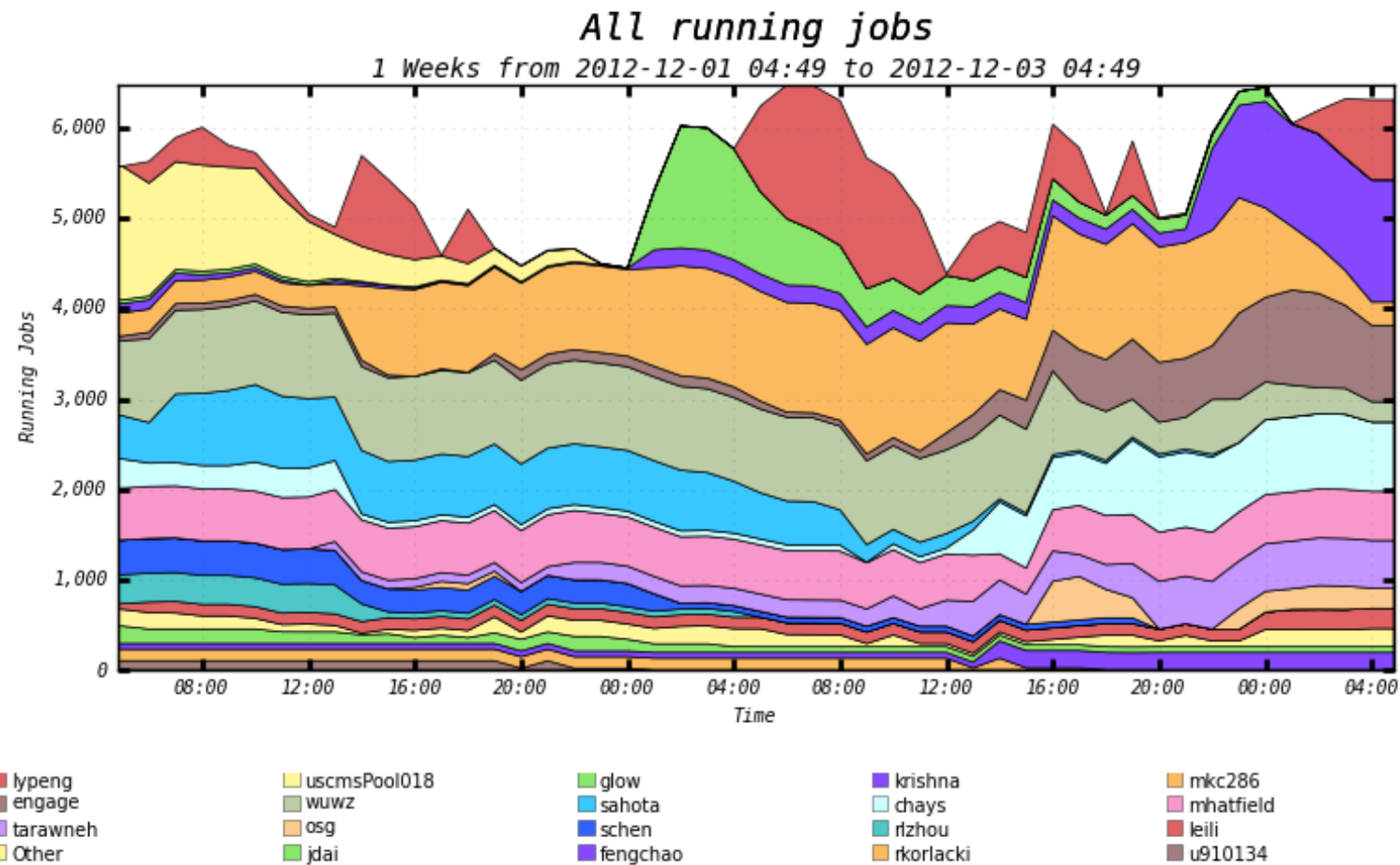
# HCC Usage of Gratia

- Local usage -- equate research group to VO
  - research group ~ VO
  - local collector, reporter for CPU only
  - multiple resources in 2 cities
  - schedulers: Maui/Torque, Condor, SLURM
  - Campus and CMS T2 clusters = 4 running gratia probes
- CMS usage -- CPU, transfers, storage
- Other usage -- AAA, mobile reporter, UPR

# Gratia Assessment

- Gratia is used extensively by HCC, we do not have a ready replacement for it
- HCC has been involved with development and a test deployment (ca. 0.15 FTE)
- Overall, reasonable amount of effort for return -- thank you!

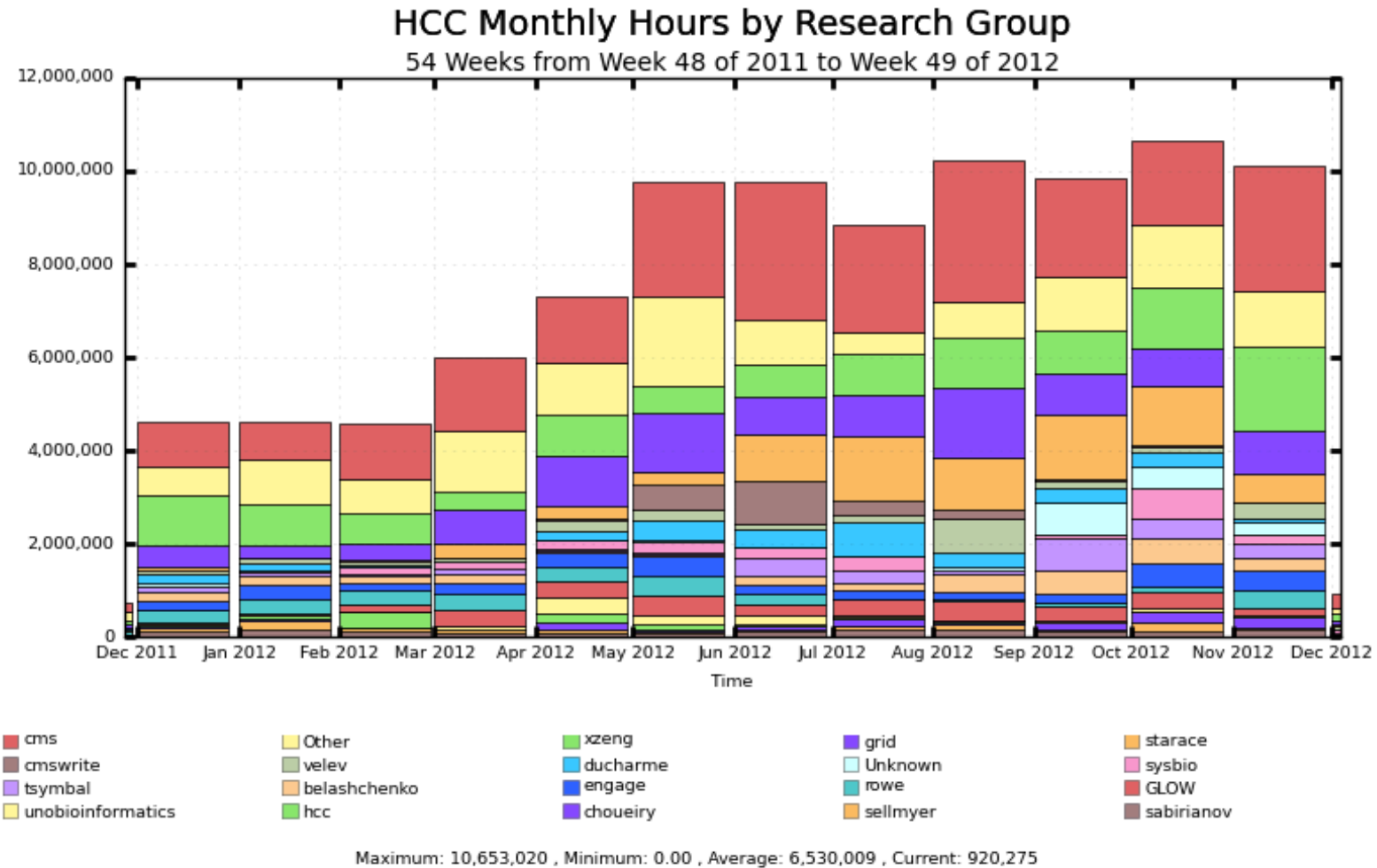
## Tusker



Maximum: 6,481 , Minimum: 0.00 , Average: 5,383 , Current: 6,316

- <http://hcc.unl.edu/gratia/index.php>

## Monthly Accounting By Research Group



- <http://t2.unl.edu/status/hcc-status>

# Requests

- SLURM probe
- Lustre probe
- Easier installation/maintenance for campus outreach
- [http://cgs.hpcf.upr.edu:8100/gratia/xml/dn\\_hours\\_bar](http://cgs.hpcf.upr.edu:8100/gratia/xml/dn_hours_bar)